

WAAS CH 78115 W18A	APP CRS 185°	Rwy Idg TDZE Apt Elev	5001 454 458
----------------------------------------	------------------------	-----------------------------	-----------------------------------------

RNAV (GPS) RWY 18

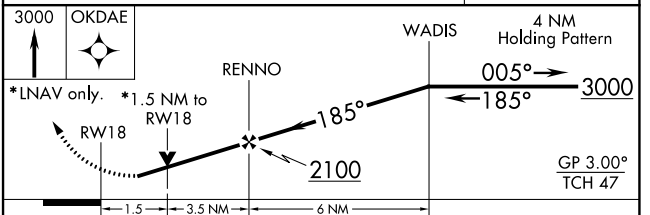
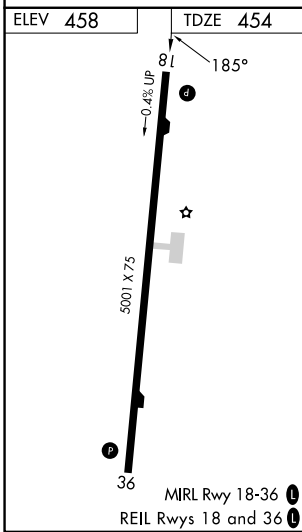
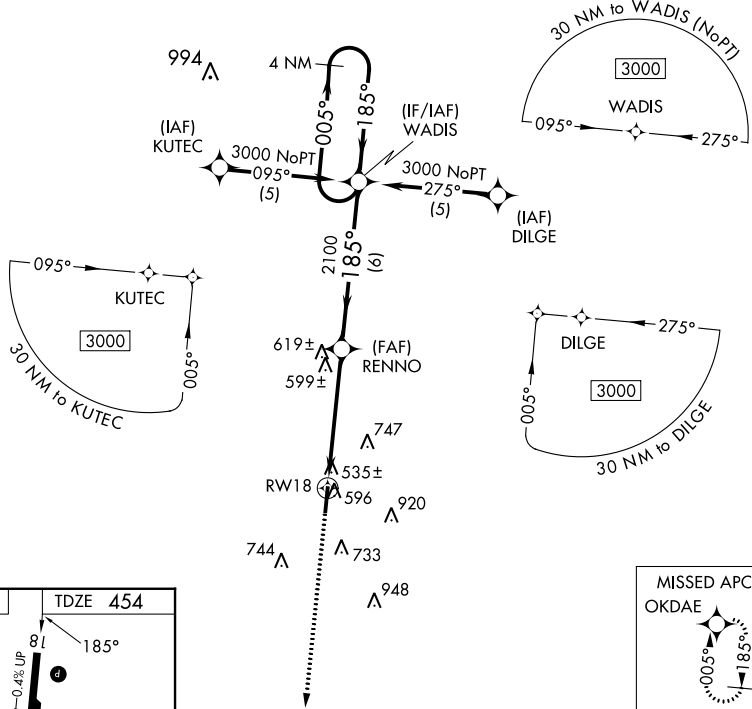
PHILADELPHIA MUNI (MPPE)

⚠ For uncompensated Baro-VNAV systems, LNAV/VNAV NA below -15°C (5°F) or above 48°C (118°F). DME/DME RNP-0.3 NA. Visibility reduction by helicopters NA.

⚠ When local altimeter setting not received, use Key Fld altimeter setting and increase all DA 101 feet and all MDA 120 feet and increase LPV all Cats, LNAV Cat C and Circling Cats C and D visibility ¼ mile, increase LNAV/VNAV all Cats, LNAV Cat D visibility ½ mile. Baro-VNAV and VDP NA when using Key Fld altimeter setting.

MISSED APPROACH:
Climb to 3000 direct OKDAE and hold.

AWOS-3P 118.725	MEMPHIS CENTER 132.75 263.0	UNICOM 123.0 (CTAF) 0
---------------------------	---------------------------------------	---------------------------------



CATEGORY	A	B	C	D
LPV DA	774-1¼ 320 (400-1¼)			
LNAV/VNAV DA	850-1½ 396 (400-1½)			
LNAV MDA	960-1 506 (600-1)		960-1½ 506 (600-1½)	
CIRCLING	1060-1 602 (700-1)		1280-2½ 822 (900-2½) 1280-2¾ 822 (900-2¾)	

SC-4, 28 NOV 2024 to 26 DEC 2024

SC-4, 28 NOV 2024 to 26 DEC 2024