

WAAS CH 86238 W05A	APP CRS 049°	Rwy ldg TDZE Apt Elev	5001 85 90
--	------------------------	-----------------------------	---------------------------------------

RNAV (GPS) RWY 5

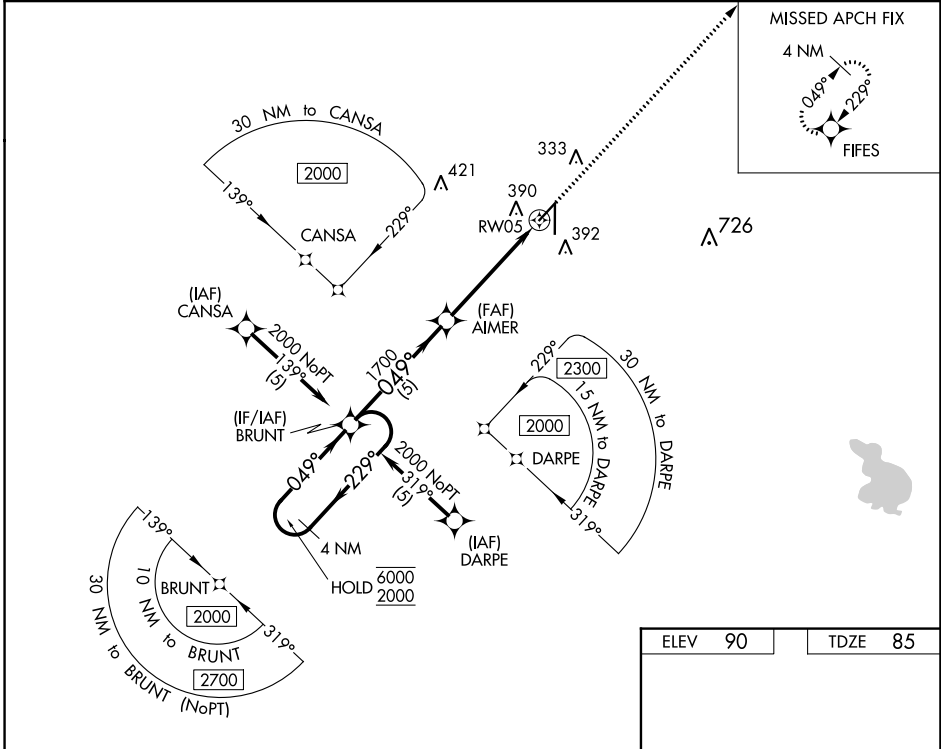
ZEPHYRHILLS MUNI (ZPH)

RNP APCH.

⚠ Rwy 5 helicopter visibility reduction below $\frac{3}{4}$ SM NA.
For uncompensated Baro-VNAV systems, LNAV/VNAV NA below -15°C or above 54°C.

MISSED APPROACH: Climb to 2000 direct FIFES and hold.

AWOS-3PT 118.975	TAMPA APP CON 119.9 290.3	UNICOM 123.075 (CTAF) 0
----------------------------	-------------------------------------	-----------------------------------



SE-3, 28 NOV 2024 to 26 DEC 2024

SE-3, 28 NOV 2024 to 26 DEC 2024

ELEV 90	TDZE 85
---------	---------

MIRL Rwy 5-23 0
HIRL Rwy 1-19 0
REIL Rws 1and 19 0

4 NM Holding Pattern

VGSI and RNAV glidepath not coincident (VGSI Angle 3.63/TCH 41).

2000 FIFES

GP 3.00° TCH 55

6000 ← 229°

2000 → 049°

1700

1700

1700

*1.2 NM to RW05

*LNAV only.

CATEGORY	A	B	C	D
LPV DA	373-1	288 (300-1)		NA
LNAV/VNAV DA	582-1 $\frac{1}{8}$	497 (500-1 $\frac{1}{8}$)		NA
LNAV MDA	600-1	515 (600-1)		NA
C CIRCLING	740-1	650 (700-1)		NA