

WAAS CH 57934 W25A	APP CRS 246°	Rwy Idg TDZE Apt Elev	3632 1072 1072
--	------------------------	-----------------------------	---

RNAV (GPS) RWY 25

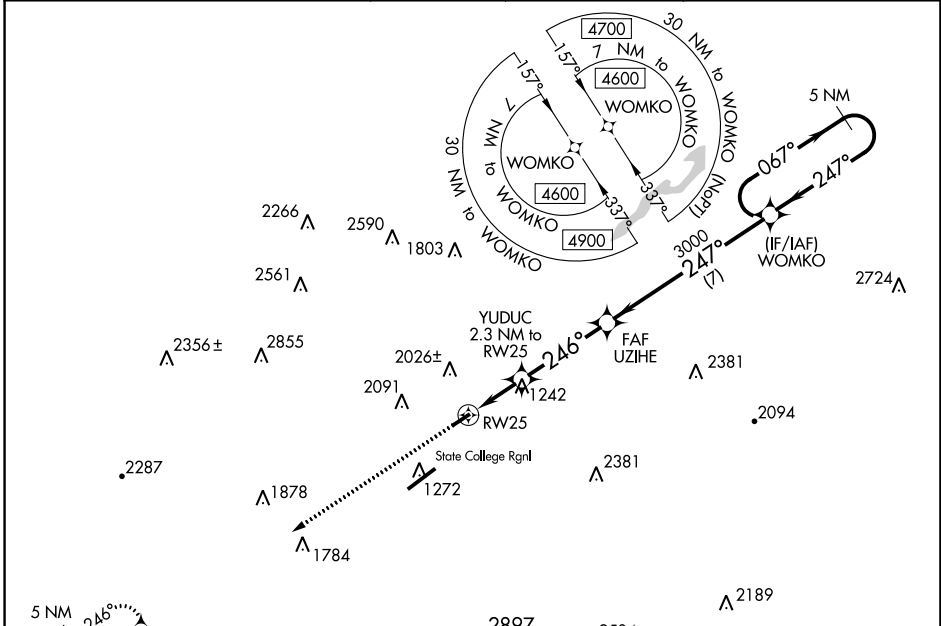
BELLEFONTE (N96)

RNP APCH - GPS.

NA Baro-VNAV NA. VDP NA with Clearfield altimeter setting. Use State College altimeter setting, when not received use Clearfield altimeter setting and increase all DA 129 feet and all MDA 140 feet. Increase LPV and LNAV/VNAV all Cats visibility 1/2 mile. Circling NA southeast of Rwy 7-25. Procedure NA at night.

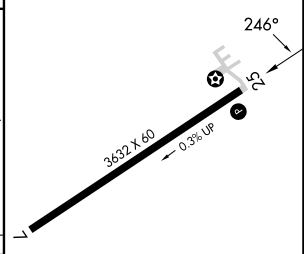
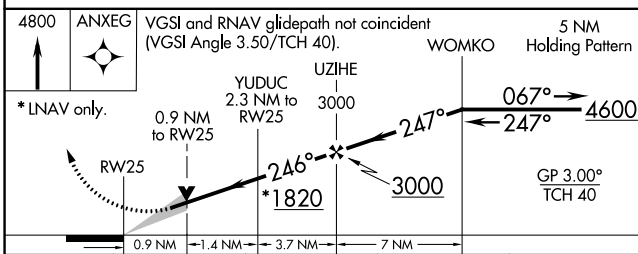
MISSED APPROACH: Climb to 4800 direct ANXEG and hold, continue climb-in-hold 4800.

UNV AWOS-3 127.65	NEW YORK CENTER 134.8 338.3	CLNC DEL 125.725	CLNC DEL 118.55 (When twr closed)	UNICOM 122.8 (CTAF)	122.7 0
-----------------------------	---------------------------------------	----------------------------	--	-------------------------------	-----------------------



4800	ANXEG	VGSI and RNAV glidepath not coincident (VGSI Angle 3.50/TCH 40).	5 NM Holding Pattern
* LNAV only.			
	0.9 NM to RW25	YUDUC 2.3 NM to RW25	UZIHE 3000
			067° → 4600 ← 247°
			GP 3.00° TCH 40
	0.9 NM	1.4 NM	3.7 NM

ELEV 1072	TDZE 1072
-----------	-----------



CATEGORY	A	B	C	D
LPV DA	1367-1	295 (300-1)		NA
LNAV/VNAV DA	1701-2¼	629 (700-2¼)		NA
LNAV MDA	1600-1	528 (500-1)		NA
C CIRCLING	2140-1¼ 1068 (1100-1¼)	2380-1½ 1308 (1400-1½)		NA

LIRL Rwy 7-25 **0**

NE-4, 28 NOV 2024 to 26 DEC 2024

NE-4, 28 NOV 2024 to 26 DEC 2024