

APP CRS	Rwy Idg	5009
186°	TDZE	357
	Apt Elev	357

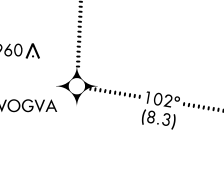
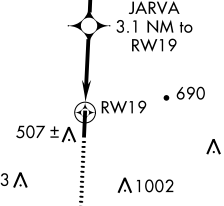
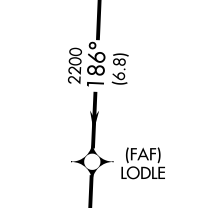
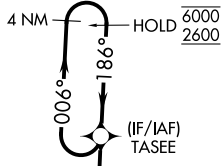
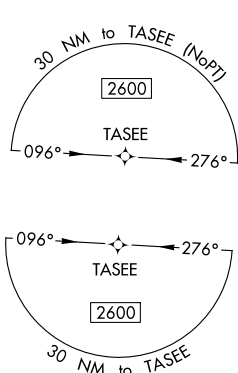
RNAV (GPS) RWY 19

RICHARD ARTHUR FLD (M95)

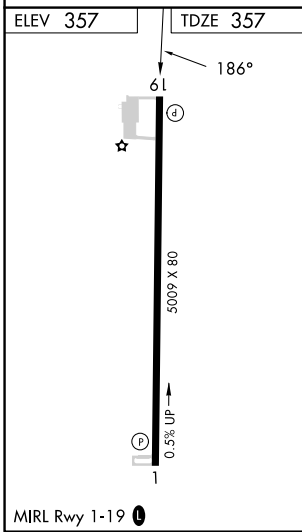
RNP APCH.
 Procedure NA at night.
 Rwy 19 helicopter visibility reduction below 1 SM NA.
 Use Jasper altimeter setting.

MISSED APPROACH: Climb to 2600 direct WOGVA and on track 102° to BESOM and hold.

JFX AWOS-3PT 119.225	COLUMBUS APP CON ★ 126.075 239.25	UNICOM 122.8 (CTAF)
--------------------------------	---	-------------------------------



▲1167



2600	WOGVA	tr 102°	BESOM	Visual Segment - Obstacles.	4 NM Holding Pattern
↑	✧		△		
	JARVA	LODLE	TASEE		
	3.1 NM to RW19				
	1380	2200	6000	2600	
	← 186°	186° →	006° →	← 186°	
	← 3.1 NM	← 2.6 NM	← 6.8 NM		
CATEGORY	A	B	C	D	
LNAV MDA	1080-1	723 (800-1)	1080-2	723 (800-2)	

SE-4, 28 NOV 2024 to 26 DEC 2024

SE-4, 28 NOV 2024 to 26 DEC 2024