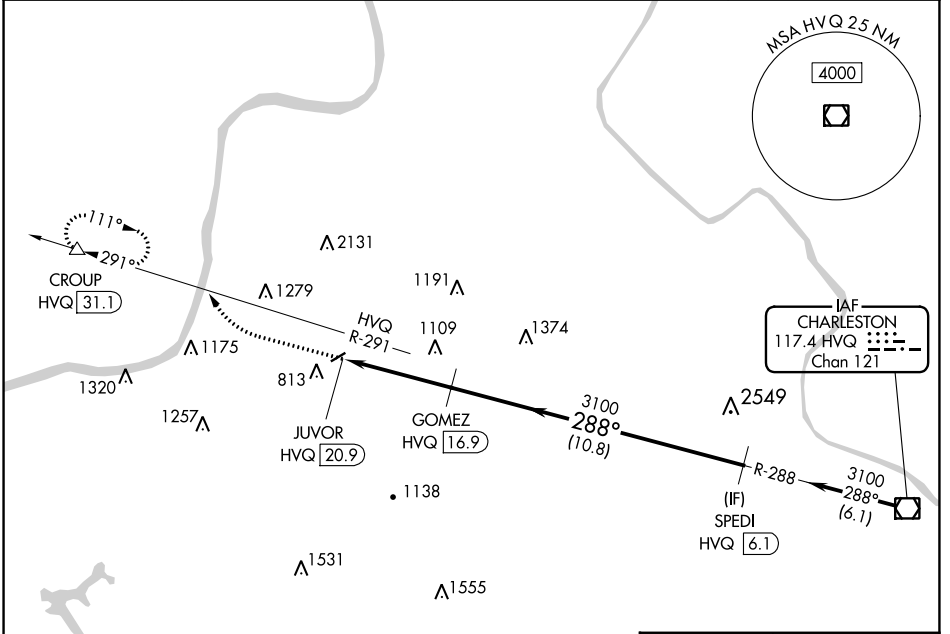


HVQ VOR/DME <b>117.4</b> Chan <b>121</b>	APP CRS <b>288°</b>	Rwy Idg TDZE Apt Elev <b>N/A</b> <b>N/A</b> <b>572</b>
--	------------------------	---

**VOR-A**  
ONA AIRPARK (12V)

DME required.		MISSED APPROACH: Climbing right turn to 3200 on HVQ VOR/DME R-291 to CROUP/HVQ VOR/DME 31.1 and hold.
NA Circling NA northwest of Rwy 7-25. Procedure NA at night. Use Huntington altimeter setting; when not received, use Point Pleasant altimeter setting.		

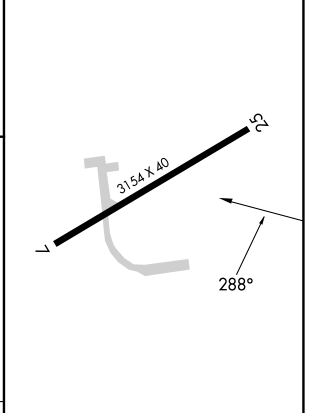
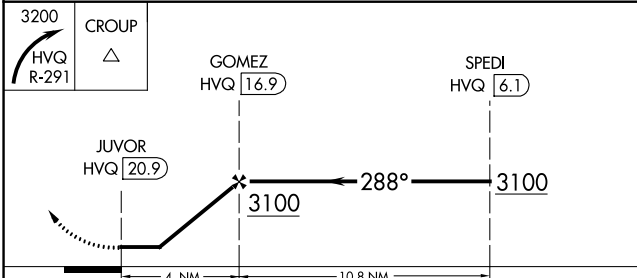
HTS ASOS <b>125.2</b>	CHARLESTON APP CON <b>124.1 269.125 (EAST)</b>	HUNTINGTON APP CON <b>119.75 270.1 (WEST)</b>	UNICOM <b>122.8 (CTAF)</b>
--------------------------	---	--	-------------------------------



NE-4, 28 NOV 2024 to 26 DEC 2024

NE-4, 28 NOV 2024 to 26 DEC 2024

ELEV 572



CATEGORY	A	B	C	D
CIRCLING	1580-1 1/4 1008 (1100-1 1/4)		NA	

LIRL Rwy 7-25