

WAAS CH <b>77742</b> <b>W18A</b>	APP CRS <b>182°</b>	Rwy Idg TDZE Apt Elev	<b>4300</b> <b>1599</b> <b>1607</b>
--	------------------------	-----------------------------	---

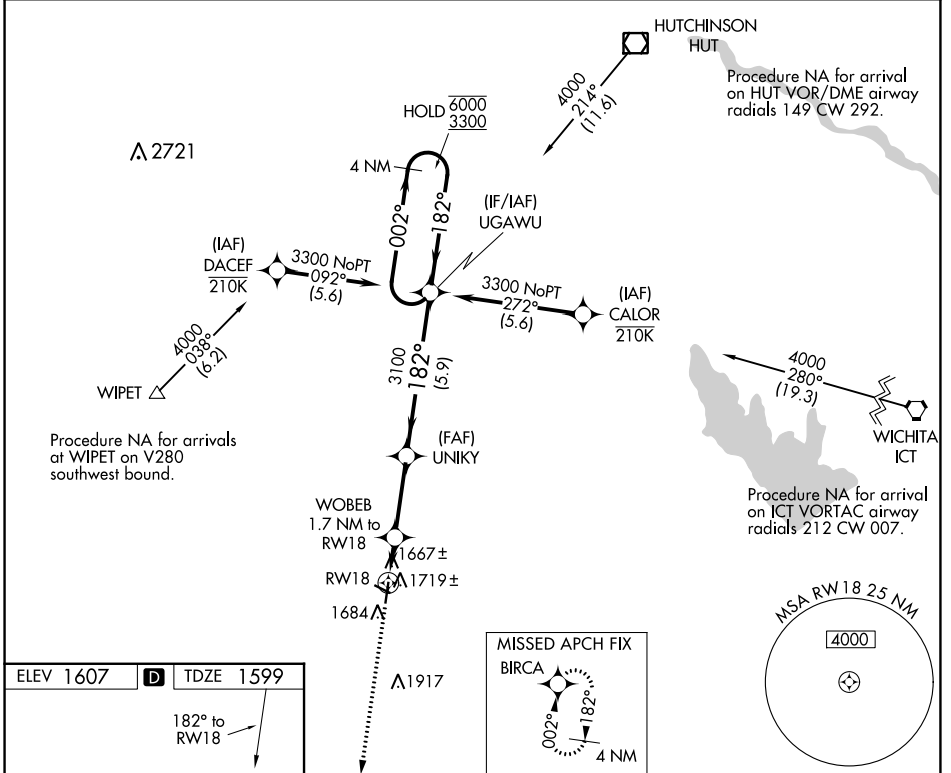
# RNAV (GPS) RWY 18

KINGMAN/CLYDE CESSNA FLD (9K8)

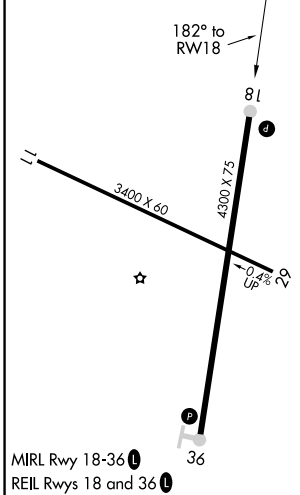
RNP APCH. MISSED APPROACH: Climb to 3600 direct BIRCA and hold.

Rwy 18 helicopter visibility reduction below 3/4 SM NA. Circling Rwy 11, 29 NA at night.

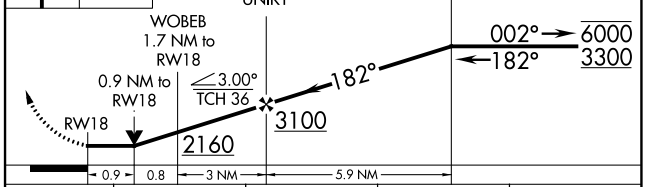
AWOS-3PT <b>119.325</b>	WICHITA APP CON <b>125.5 306.2</b>	UNICOM <b>122.8</b> (CTAF) <b>0</b>
----------------------------	---------------------------------------	--



ELEV 1607	<b>D</b>	TDZE 1599
-----------	----------	-----------



3600	BIRCA	VGSI and descent angles not coincident (VGSI Angle 3.00/TCH 43).	4 NM Holding Pattern
------	-------	--	----------------------



CATEGORY	A	B	C	D
LP MDA	1920-1 321 (400-1)			NA
LNAV MDA	1980-1 381 (400-1)	1980-1½ 381 (400-1½)		NA
<b>C</b> CIRCLING	2040-1 433 (500-1)	2060-1 453 (500-1)	2160-1½ 553 (600-1½)	NA

NC-2, 28 NOV 2024 to 26 DEC 2024

NC-2, 28 NOV 2024 to 26 DEC 2024