

WAAS CH <b>82042</b> <b>W36A</b>	APP CRS <b>002°</b>	Rwy Idg TDZE Apt Elev	<b>4300</b> <b>1597</b> <b>1607</b>
--	------------------------	-----------------------------	---

# RNAV (GPS) RWY 36

KINGMAN/CLYDE CESSNA FLD (9K8)

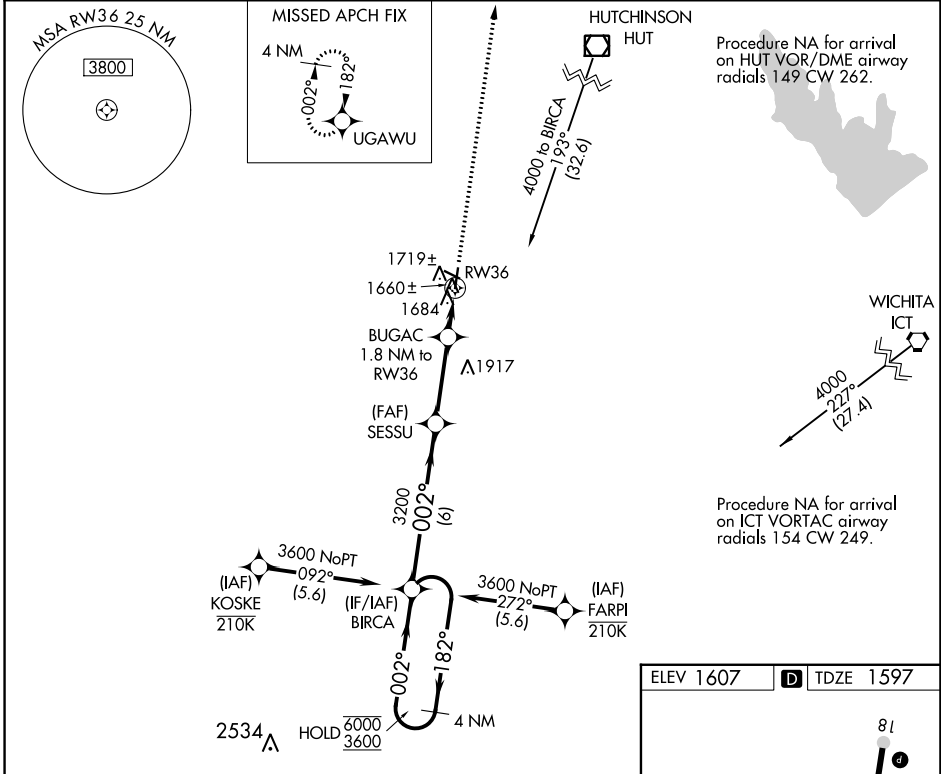
RNP APCH.  
 Rwy 36 helicopter visibility reduction below 3/4 SM NA. Circling Rwy 11, 29 NA at night.

MISSED APPROACH: Climb to 3300 direct UGAWU and hold.

AWOS-3PT  
**119.325**

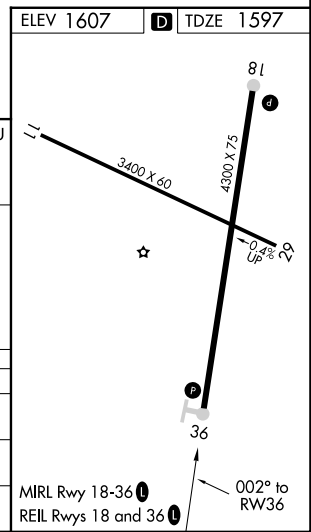
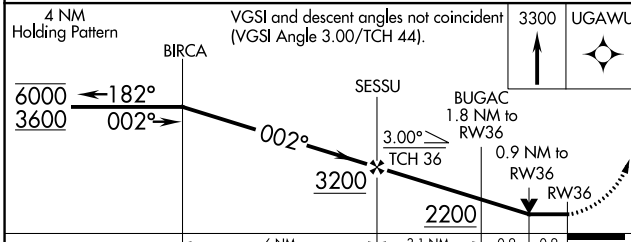
WICHITA APP CON  
**125.5 306.2**

UNICOM  
**122.8 (CTAF)**



NC-2, 28 NOV 2024 to 26 DEC 2024

NC-2, 28 NOV 2024 to 26 DEC 2024



CATEGORY	A	B	C	D
LP MDA	1920-1 323 (400-1)			NA
LNAV MDA	1980-1	383 (400-1)	1980-1 1/8 383 (400-1 1/8)	NA
CIRCLING	2040-1 433 (500-1)	2060-1 453 (500-1)	2160-1 1/2 553 (600-1 1/2)	NA