

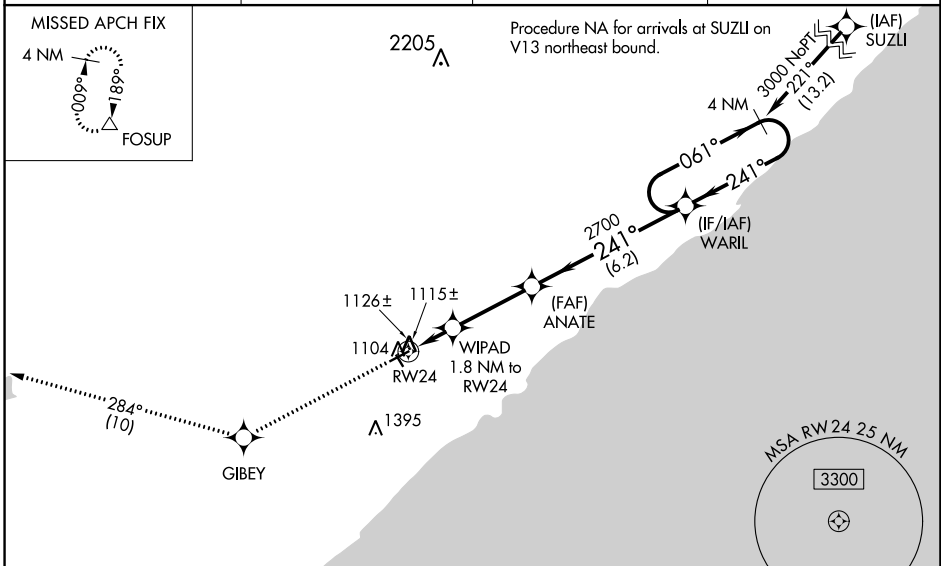
WAAS CH 90521 W24A	APP CRS 241°	Rwy Idg TDZE Apf Elev	4400 1073 1073
--	------------------------	-----------------------------	---

RNAV (GPS) RWY 24

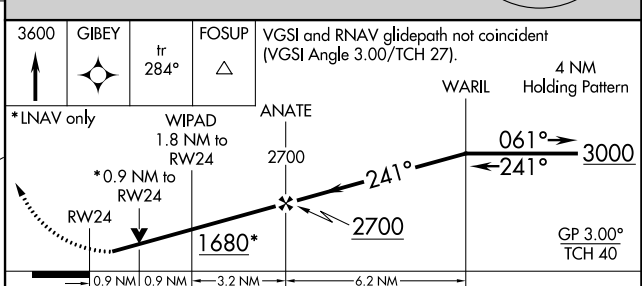
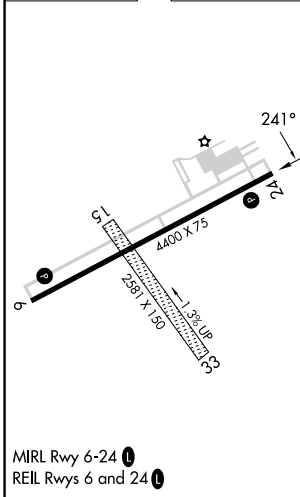
RICHARD B HELGESON (TWM)

RNP APCH.	<p>▼ Baro-VNAV NA and VDP NA when using Duluth Intl altimeter setting. For uncompensated Baro-VNAV systems, LNAV/VNAV NA below -17°C or above 54°C. When local altimeter setting not received, use Duluth Intl altimeter setting: increase LPV and LNAV/VNAV DA to 1424 feet and visibility all Cats ¼ SM; increase all MDA 120 feet. Rwy 24 helicopter visibility reduction below ¾ SM NA. Circling to Rwy 15, 33 NA.</p>	MISSED APPROACH: Climb to 3600 direct GIBEY and on track 284° to FOSUP and hold.
-----------	--	---

AWOS-3PT 119.325	DULUTH APP CON 125.45 233.7	GCO 121.725	CTAF 122.9 0
----------------------------	---------------------------------------	-----------------------	------------------------



ELEV 1073	TDZE 1073
-----------	-----------



CATEGORY	A	B	C	D
LPV DA	1323-7/8	250 (300-7/8)		NA
LNAV/VNAV DA	1323-7/8	250 (300-7/8)		NA
LNAV MDA	1380-1	307 (400-1)		NA
CIRCLING	1600-1 527 (600-1)	1760-1 687 (700-1)		NA

NC-1, 28 NOV 2024 to 26 DEC 2024

NC-1, 28 NOV 2024 to 26 DEC 2024