

APP CRS <b>281°</b>	Rwy Idg <b>3705</b>
	TDZE <b>686</b>
	Apt Elev <b>686</b>

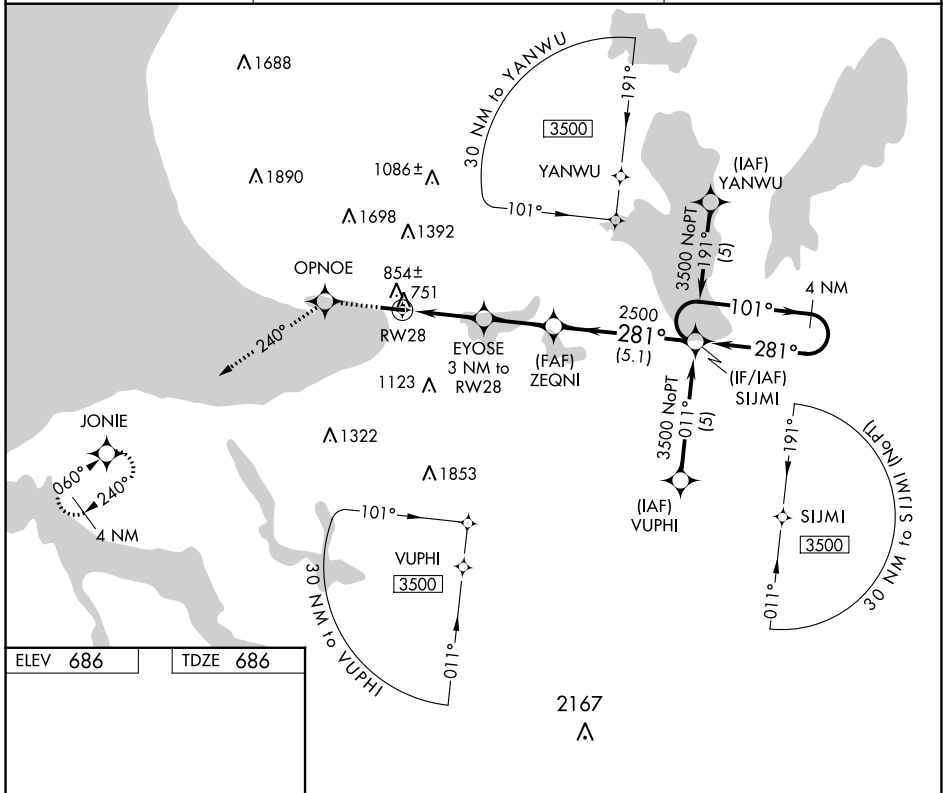
# RNAV (GPS) RWY 28

HARBOR SPRINGS (MGN)

**⚠** DME/DME RNP-0.3 NA. Helicopter visibility reduction below 1 SM NA. When local altimeter setting not received, use Pellsion altimeter setting and increase all MDAs 40 feet. Procedure NA at night.

**MISSED APPROACH:** Climb to 3400 direct OPNOE and via 240° track to JONIE and hold.

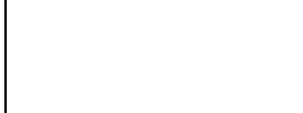
AWOS-3P <b>119.925</b>	MINNEAPOLIS CENTER <b>134.6 354.05</b>	UNICOM <b>122.8</b> (CTAF) <b>📻</b>
---------------------------	---	--



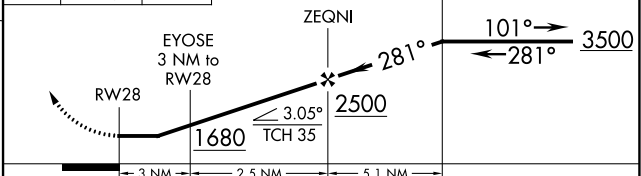
EC-1, 28 NOV 2024 to 26 DEC 2024

EC-1, 28 NOV 2024 to 26 DEC 2024

ELEV <b>686</b>	TDZE <b>686</b>
-----------------	-----------------



3400 OPNOE JONIE VGS1 and descent angles not coincident (VGS1 Angle 4.00/TCH 35).  
 4 NM Holding Pattern



CATEGORY	A	B	C	D
LNAV MDA	1120-1	434 (500-1)	NA	
CIRCLING	1380-1 694 (700-1)	1500-1¼ 814 (900-1¼)	NA	