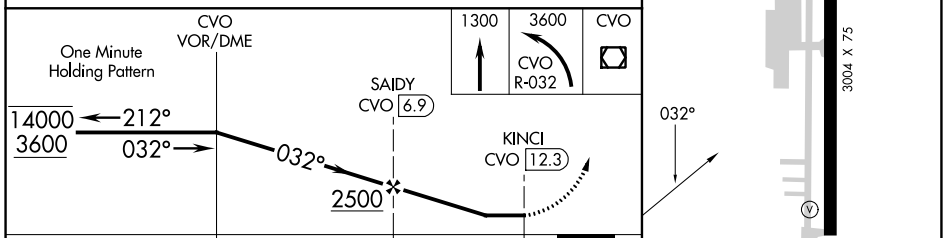
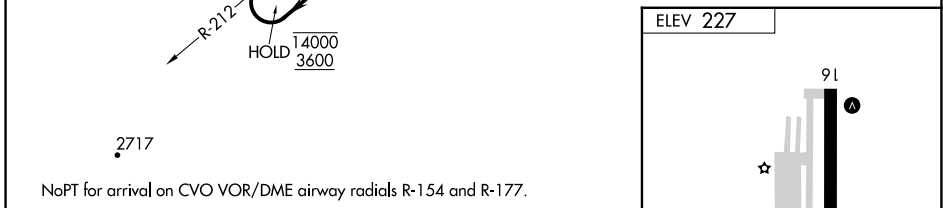
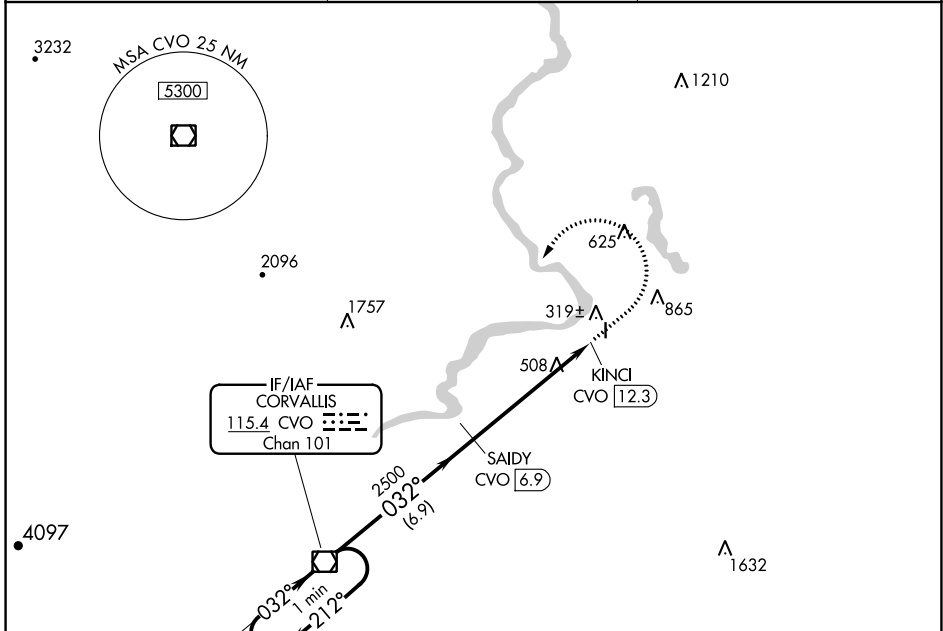


VOR/DME CVO 115.4 Chan 101	APP CRS 032°	Rwy Idg TDZE Apt Elev N/A N/A 227
--	------------------------	--

VOR-A
ALBANY MUNI (S12)

DME required.	MISSED APPROACH: Climb to 1300 then climbing left turn to 3600 on CVO VOR/DME R-032 to CVO VOR/DME and hold.
<p>▼ Rwy 16 and 34 helicopter visibility reduction below 1 SM NA. When</p> <p>▲ NA local altimeter setting not received, use Corvallis altimeter setting.</p>	

AWOS-3PT 119.925	CASCADE APP CON * 127.5 348.7	UNICOM 122.725 (CTAF) 0
----------------------------	---	-----------------------------------



CATEGORY	A	B	C	D
CIRCLING	940-1 713 (800-1)	1020-1 793 (800-1)	NA	

NW-1, 28 NOV 2024 to 26 DEC 2024

NW-1, 28 NOV 2024 to 26 DEC 2024