

BOWIE, MARYLAND

AL-6997 (FAA)

23054

APP CRS	Rwy Idg	2190
344°	TDZE	168
	Apt Elev	168

RNAV (GPS) RWY 36

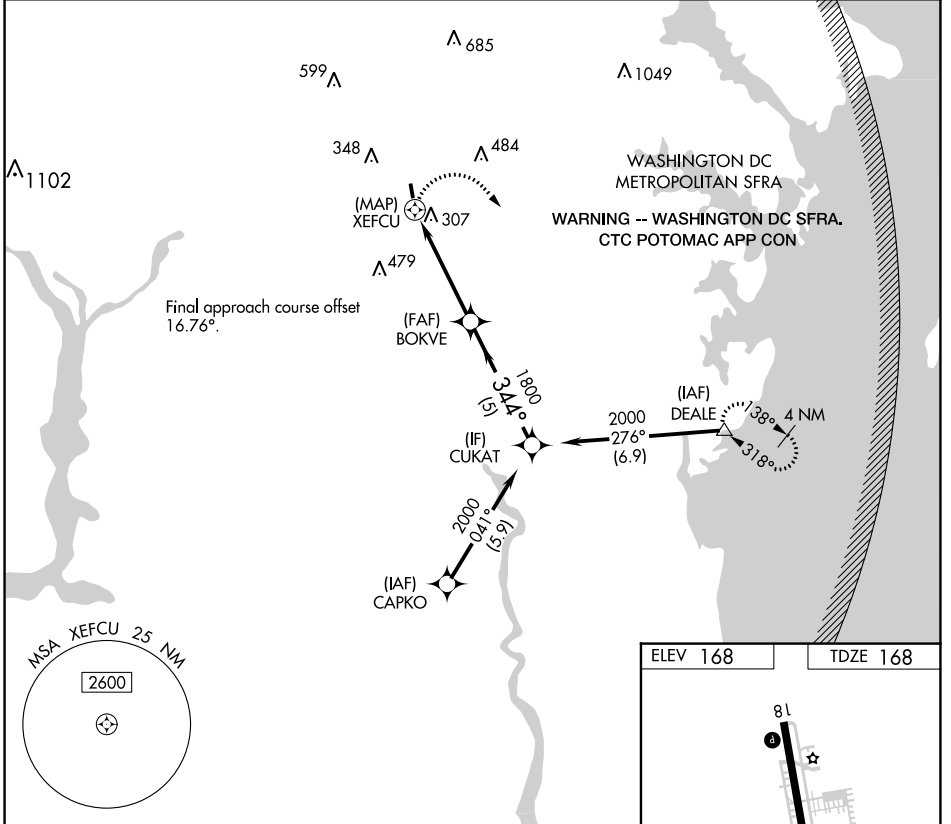
FREEWAY (W00)

RNP APCH.

Procedure NA at night. Rwy 36 helicopter visibility reduction below 1 SM NA. Use Fort Meade (Odenton) altimeter setting; when not received, use College Park altimeter setting and increase all MDAs 20 feet.

MISSED APPROACH: Climbing right turn to 2000 direct DEALE and hold.

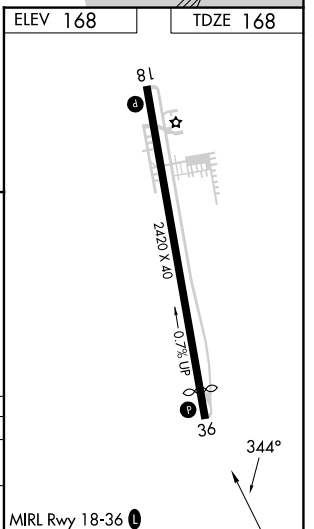
FME AWOS-3 123.925	POTOMAC APP CON 128.0 335.5	UNICOM 123.075 (CTAF) 0
------------------------------	---------------------------------------	-----------------------------------



NE-3, 28 NOV 2024 to 26 DEC 2024

NE-3, 28 NOV 2024 to 26 DEC 2024

2000	DEALE	Visual Segment-Obstacles.	CUKAT
	△		
CATEGORY	A	B	C
LNVA MDA	700-1	532 (600-1)	NA
CIRCLING	700-1 532 (600-1)	760-1 592 (600-1)	NA



BOWIE, MARYLAND
Amdt 2A 08OCT20

38°56'N-76°46'W

RNAV (GPS) RWY 36

FREEWAY (W00)