

APP CRS	Rwy Idg	<b>2697</b>
<b>320°</b>	TDZE	<b>763</b>
	Apt Elev	<b>763</b>

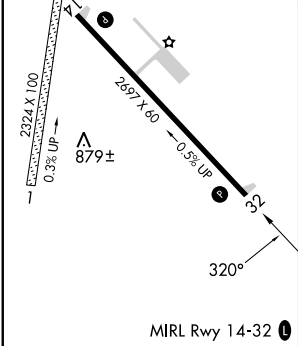
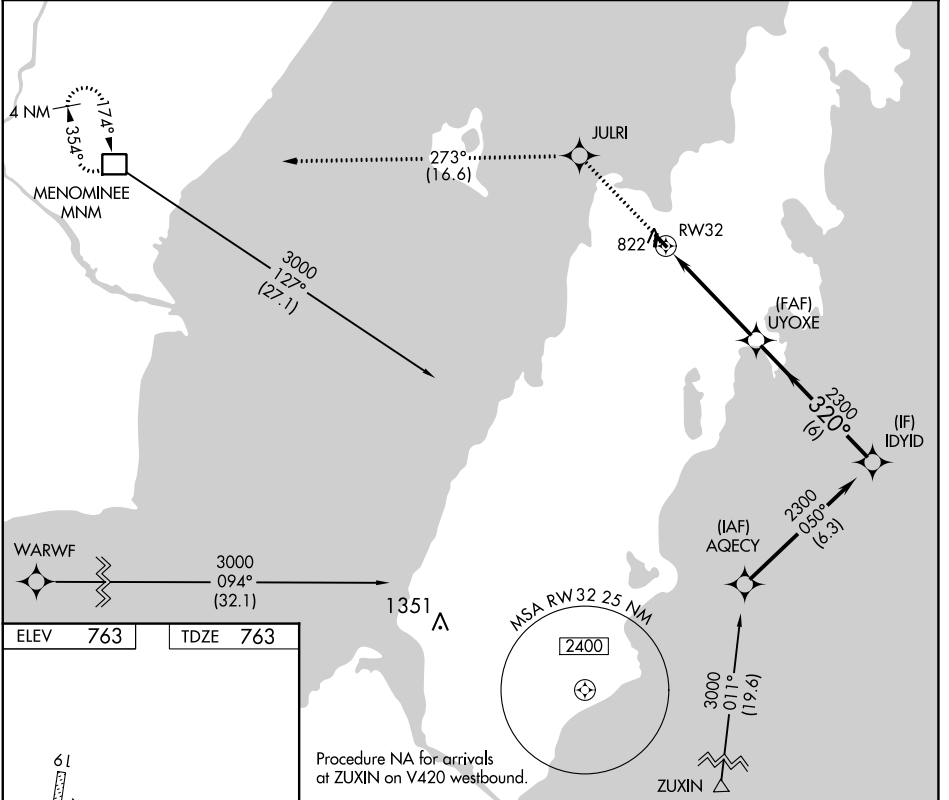
# RNAV (GPS) RWY 32

EPHRAIM/GIBRALTAR (3D2)

RNP APCH - GPS.

MISSED APPROACH: Climb to 3000 direct JULRI and on track 273° to MNM DME and hold.

<p><b>▼</b> <b>▲</b></p> <p>Procedure NA at night. Rwy 32 helicopter visibility reduction below 3/4 SM NA.</p>	<p>AWOS-3PT <b>124.175</b></p>	<p>GREEN BAY APP CON★ <b>120.3 338.2</b></p>	<p>UNICOM <b>123.0 (CTAF) 0</b></p>
--	------------------------------------	--	---



3000	JULRI	tr 273°	MNM	VGSI and descent angles not coincident (VGSI Angle 3.00/TCH 25).
↑	✧		□	
UYOXE		IDYID		
1.1 NM to RW32		320°		2300
RW32		3.00° TCH 40		
1.1		3.6 NM		6 NM
CATEGORY	A	B	C	D
LNAV MDA	1120-1		357 (400-1)	NA

EC-3, 28 NOV 2024 to 26 DEC 2024

EC-3, 28 NOV 2024 to 26 DEC 2024