

VORTAC EAU <b>113.65</b> Chan <b>83</b> (Y)	APP CRS <b>265°</b>	Rwy Idg TDZE Apt Elev	<b>5074</b> <b>894</b> <b>895</b>
---	------------------------	-----------------------------	---

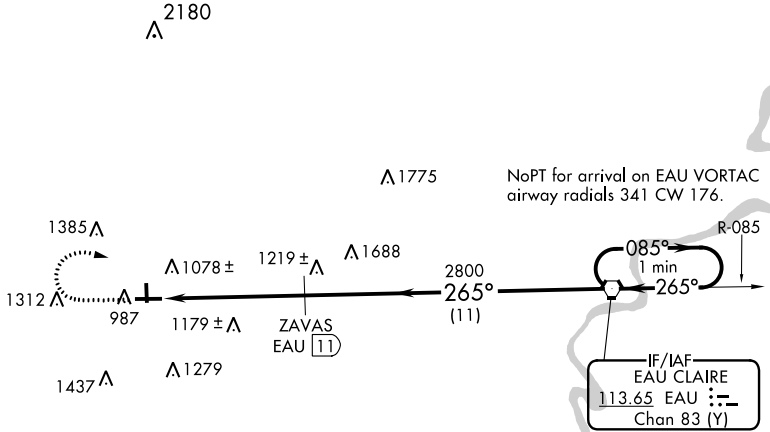
# VOR/DME RWY 27

MENOMONIE MUNI/SCORE FLD (LUM)

**⚠** When local altimeter setting not received, use Chippewa Valley Rgnl altimeter setting and increase all MDA 60 feet, increase Circling Cat B and C visibility ¼ SM. VDP NA when using Chippewa Valley Rgnl altimeter setting. Rwy 27 helicopter visibility reduction below ¾ SM NA.

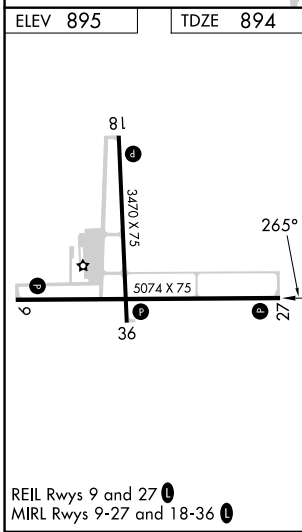
**MISSED APPROACH:** Climb to 2000 then climbing right turn to 2800 direct EAU VORTAC and hold.

AWOS-3 <b>118.025</b>	MINNEAPOLIS CENTER <b>125.3 335.6</b>	UNICOM <b>122.7</b> (CTAF) <b>0</b>
--------------------------	--	--



EC-3, 28 NOV 2024 to 26 DEC 2024

EC-3, 28 NOV 2024 to 26 DEC 2024



2000	2800	EAU	VGSI and descent angles not coincident (VGSI Angle 3.00/TCH 45).	One Minute Holding Pattern
ZAVAS EAU 11		EAU VORTAC		
EAU 14.2		EAU 16.2		
2 NM		3.2 NM	11 NM	
CATEGORY	A	B	C	D
S-27	1560-1	666 (700-1)	1560-1¾ 666 (700-1¾)	NA
<b>C</b> CIRCLING	1560-1 665 (700-1)	1800-1¼ 905 (1000-1¼)	1820-2¾ 925 (1000-2¾)	NA