

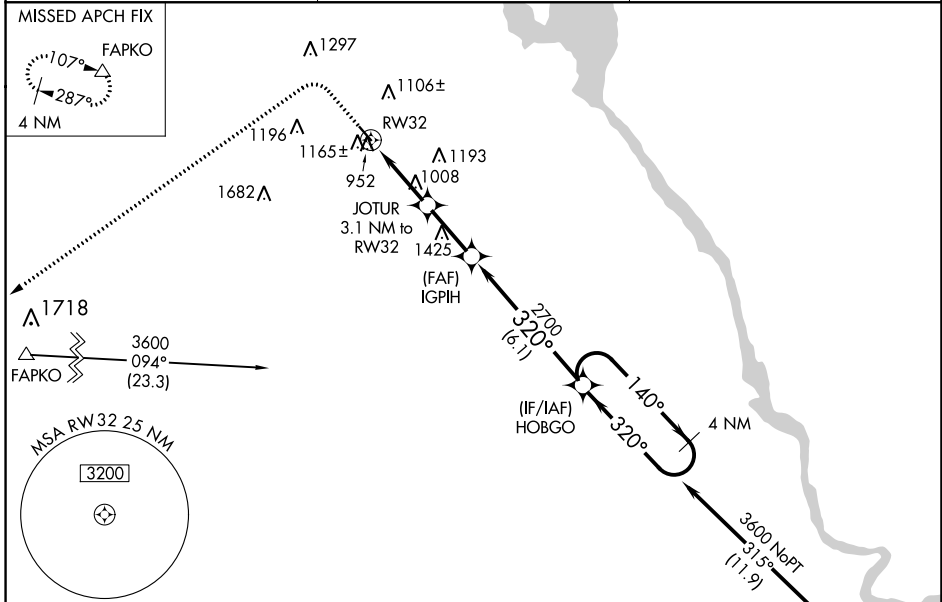
WAAS CH 49129 W32A	APP CRS 320°	Rwy Idg TDZE Apt Elev	3688 905 908
--	------------------------	-----------------------------	---

RNAV (GPS) RWY 32

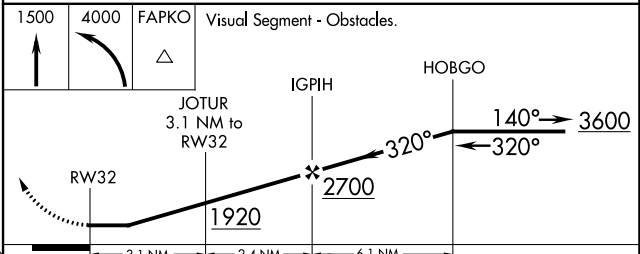
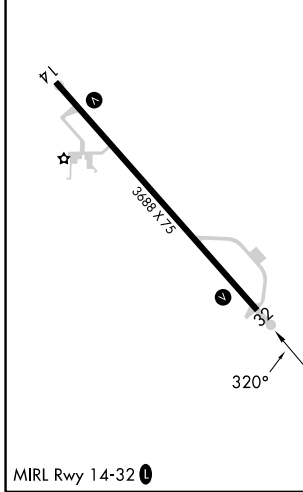
MAUSTON/NEW LISBON UNION (82C)

RNP APCH.	MISSED APPROACH: Climb to 1500 then climbing left turn to 4000 direct FAPKO and hold.
<p>▼ Use Volk Field altimeter setting; when not received use Wisconsin Dells altimeter setting and increase all MDA 60 feet and all Cat C visibilities 1/4 mile. Procedure NA at night. Helicopter visibility reduction below 1 SM NA.</p>	

AWOS-3 123.925	VOLK APP CON ★ 135.25 244.875	CTAF 122.9 0
--------------------------	---	------------------------



ELEV 908	TDZE 905
----------	----------



CATEGORY	A	B	C	D
LP MDA	1280-1	375 (400-1)	1280-1 1/8 375 (400-1 1/8)	NA
LNAV MDA	1440-1	535 (600-1)	1440-1 1/8 535 (600-1 1/8)	NA

EC-3, 28 NOV 2024 to 26 DEC 2024

EC-3, 28 NOV 2024 to 26 DEC 2024