

APP CRS
305°

Rwy Idg **3505**
TDZE **1335**
Apt Elev **1335**

RNAV (GPS) RWY 30

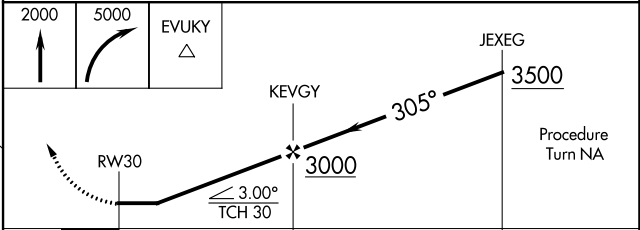
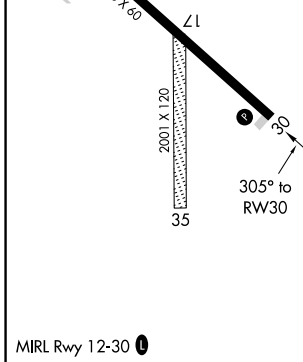
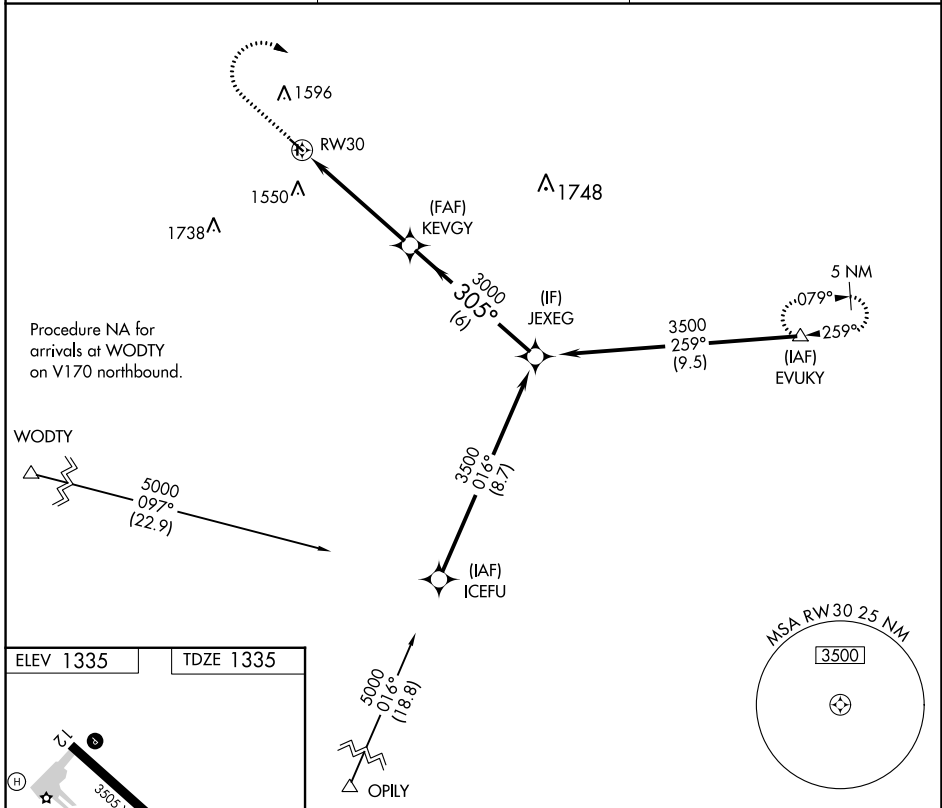
OAKES MUNI (2D5)

RNP APCH

▼ When local altimeter setting not received, use Aberdeen altimeter setting; increase all MDA 120 feet and LNAV and Circling Cat C visibility ¼ mile. Circling Rwy 17, 35 NA. Rwy 30 helicopter visibility reduction below 1 SM NA.

▲ NA MISSED APPROACH: Climb to 2000 then climbing right turn to 5000 direct EVUKY and hold.

AWOS-3 **118,675** MINNEAPOLIS CENTER **124.2 270.3** CTAF **122.9**



CATEGORY	A	B	C	D
LNAV MDA	1920-1	585 (600-1)	1920-1¾ 585 (600-1¾)	NA
CIRCLING	1920-1	585 (600-1)	2020-2 685 (700-2)	NA

NC-1, 28 NOV 2024 to 26 DEC 2024

NC-1, 28 NOV 2024 to 26 DEC 2024