

# RNAV (GPS) RWY 13

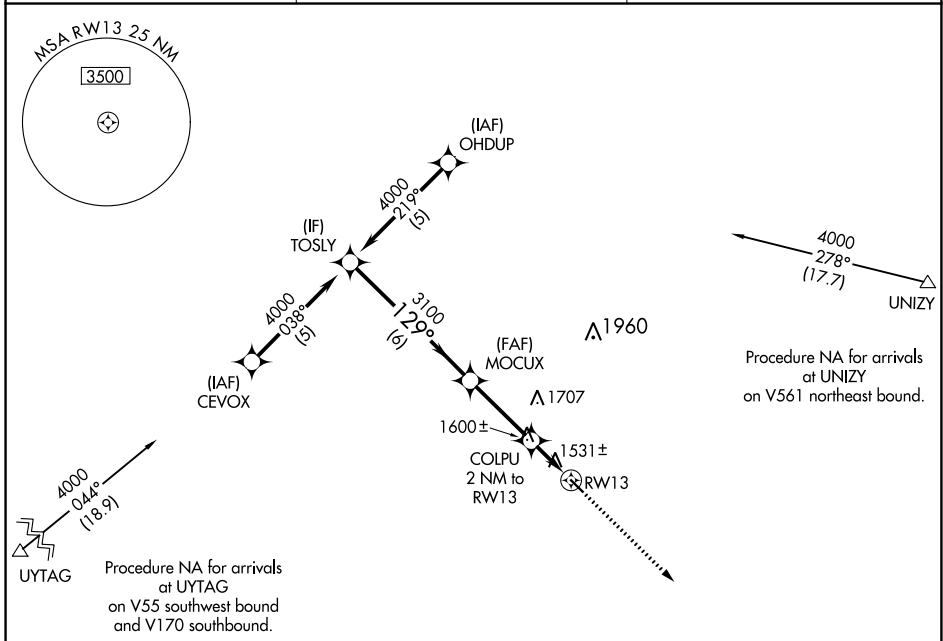
COOPERSTOWN MUNI (S32)

APP CRS <b>129°</b>	Rwy Idg TDZE Apt Elev	<b>3500</b> <b>1424</b> <b>1424</b>
------------------------	-----------------------------	---

**NA** DME/DME RNP-0.3 NA. Visibility reduction by helicopters NA. When local altimeter setting not received, use Jamestown altimeter setting and increase all MDA 100 feet and increase LNAV Cat C visibility 1/4 mile.

MISSED APPROACH: Climb to 3100 direct RAKGU and hold.

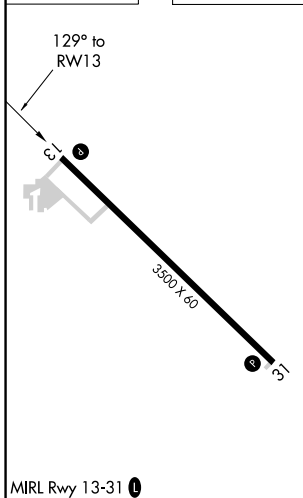
AWOS-3 <b>118.75</b>	MINNEAPOLIS CENTER <b>132.15 269.6</b>	CTAF <b>122.9</b>
-------------------------	---	----------------------



NC-1, 28 NOV 2024 to 26 DEC 2024

NC-1, 28 NOV 2024 to 26 DEC 2024

ELEV 1424	TDZE 1424
-----------	-----------



VGSI and descent angles not coincident (VGSI Angle 3.00/TCH 25).

Procedure Turn NA

3100 RAKGU

MOCUX

COLPU 2 NM to RW13

3.04° TCH 40 RW13

	6 NM	3.1 NM	2 NM	
CATEGORY	A	B	C	D
LNAV MDA	1860-1	436 (500-1)	1860-1¼ 436 (500-1¼)	NA
CIRCLING	1880-1	456 (500-1)	1880-1½ 456 (500-1½)	NA