

APP CRS	Rwy Idg	<b>2289</b>
<b>059°</b>	TDZE	<b>118</b>
	Apt Elev	<b>118</b>

# RNAV (GPS) RWY 6

POTOMAC AIRFIELD (VKK)

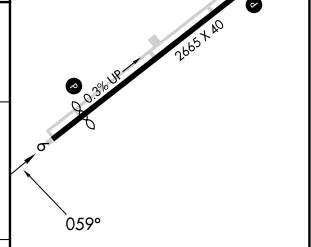
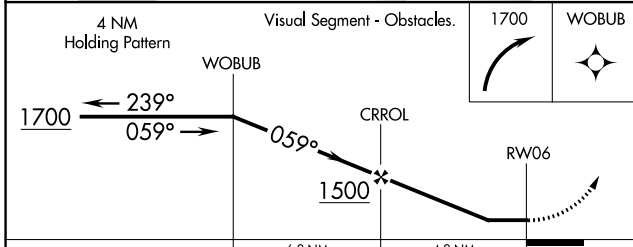
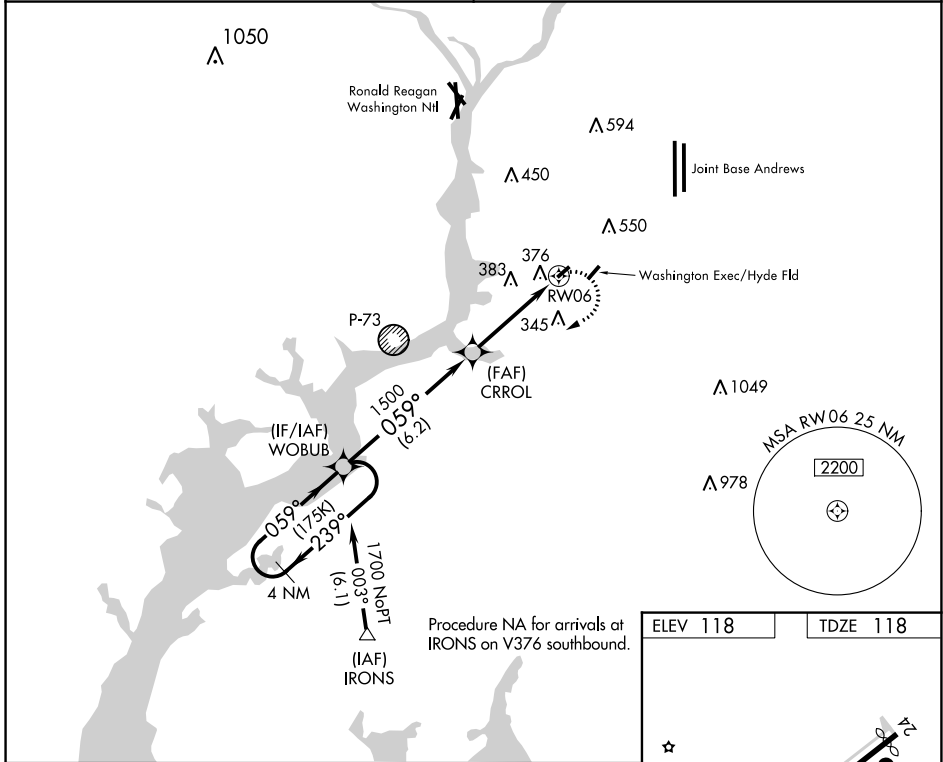
RNP APCH - GPS.

**▽** Circling NA SE of Rwy 6-24. Circling Rwy 24 NA at night. If local altimeter setting not received, use Joint Base Andrews altimeter setting and increase all MDAs 40 feet. Rwy 6 helicopter visibility reduction below 1 SM NA.

**△** NA

MISSED APPROACH: Climbing right turn to 1700 direct WOBUB and hold.

POTOMAC APP CON <b>124.7 338.2</b>	UNICOM <b>122.8 (CTAF) 0</b>
---------------------------------------	---------------------------------



CATEGORY	A	B	C	D
RNAV MDA	680-1 562 (600-1)		NA	
CIRCLING	740-1 622 (700-1)		NA	

MIRL Rwy 6-24 0

REIL Rwy 6 and 24

NE-3, 28 NOV 2024 to 26 DEC 2024

NE-3, 28 NOV 2024 to 26 DEC 2024