

APP CRS	Rwy Idg	N/A
346°	TDZE	N/A
	Apt Elev	5055

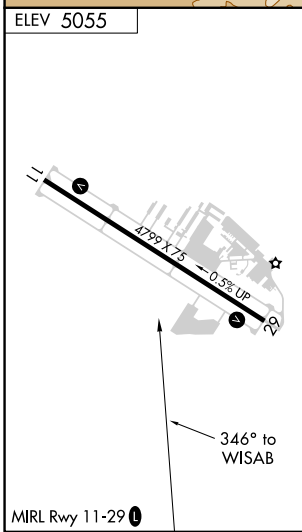
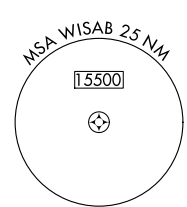
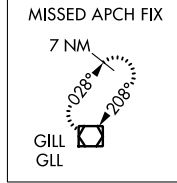
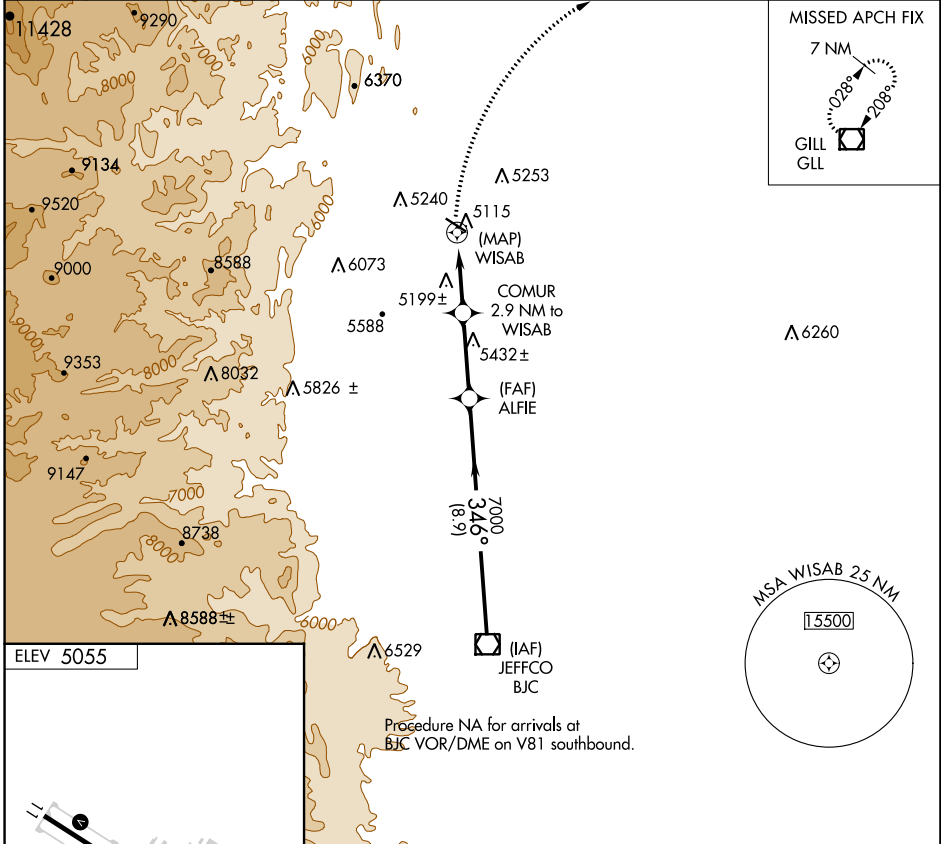
RNAV (GPS)-B

VANCE BRAND (LMO)

⚠ When local altimeter setting not received, use Denver Intl altimeter setting and increase all MDA 120 feet; and increase Cat C/D visibility ¼ mile.
⚠ DME/DME RNP-0.3 NA. Visibility reduction by helicopters NA.

MISSED APPROACH: Climbing right turn to 7200 direct GLL VOR/DME and hold.

AWOS-3 120.0	DENVER APP CON 125.12 263.02	UNICOM 122.975 (CTAF) 📻
------------------------	--	--



SW-1, 28 NOV 2024 to 26 DEC 2024

SW-1, 28 NOV 2024 to 26 DEC 2024

	7200	GLL	COMUR 2.9 NM to WISAB	ALFIE	7000	9200	BJC VOR/DME
CATEGORY	A	B	C	D			
CIRCLING	5560-1 505 (600-1)	5580-1 525 (600-1)	5880-2½ 825 (900-2½)	6500-3 1445 (1500-3)			