

APP CRS 305°	Rwy Idg TDZE Apt Elev	3704 151 151
------------------------	-----------------------------	---

RNAV (GPS) RWY 30

LIVINGSTON MUNI (00R)

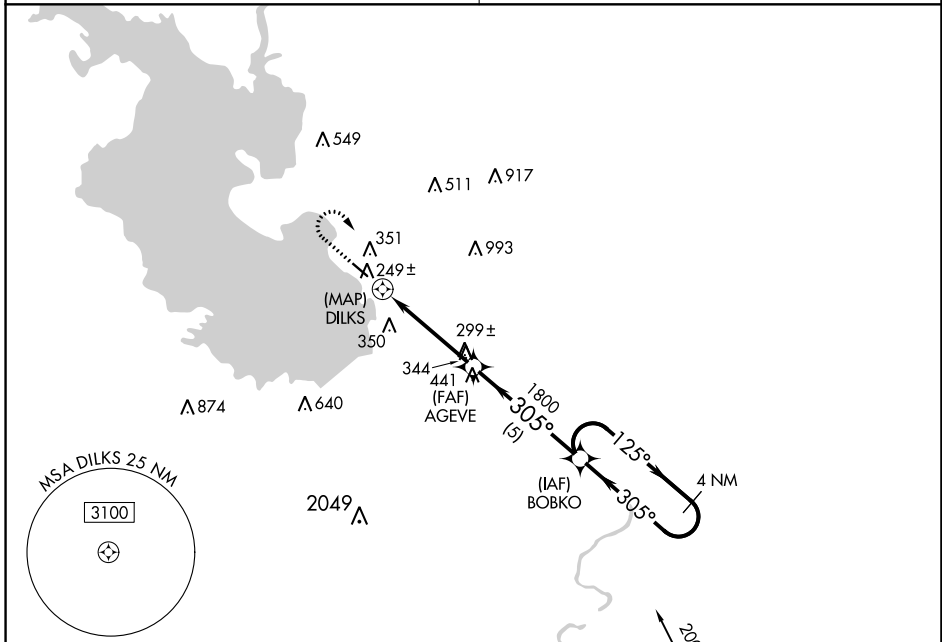
RNP APCH-GPS.

▼ Use Conroe/North Houston Rgnl altimeter setting. Rwy 30 helicopter
 ▲ NA visibility reduction below 1 SM NA. Night landing: Rwy 30 NA.

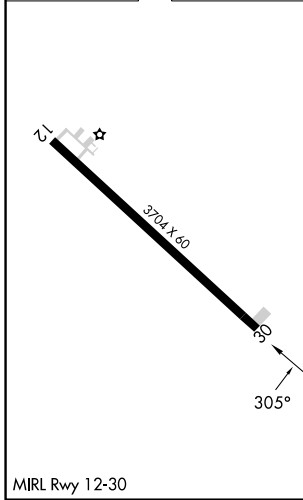
MISSED APPROACH: Climb to 1000 then climbing right turn to 2000 direct BOBK0 WP and hold.

HOUSTON CENTER
125.175 285.575

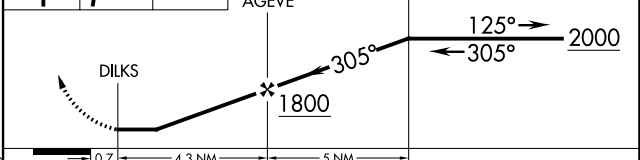
UNICOM
122.7 (CTAF)



ELEV 151	TDZE 151
----------	----------



1000	2000	BOBK0	Visual Segment - Obstacles.	4 NM Holding Pattern
------	------	-------	-----------------------------	----------------------



CATEGORY	A	B	C	D
LNAV MDA	680-1	529 (600-1)	680-1½ 529 (600-1½)	NA
CIRCLING	800-1	649 (700-1)	800-1¾ 649 (700-1¾)	NA

SC-5, 28 NOV 2024 to 26 DEC 2024

SC-5, 28 NOV 2024 to 26 DEC 2024