

WAAS CH 93741 W25A	APP CRS 228°	Rwy Idg TDZE Apt Elev	6409 5278 5278
--	------------------------	-----------------------------	---

RNAV (GPS) RWY 25

RANGELY (4VØ)

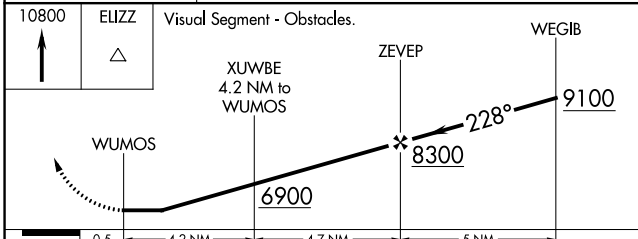
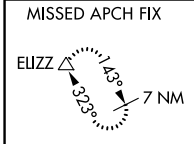
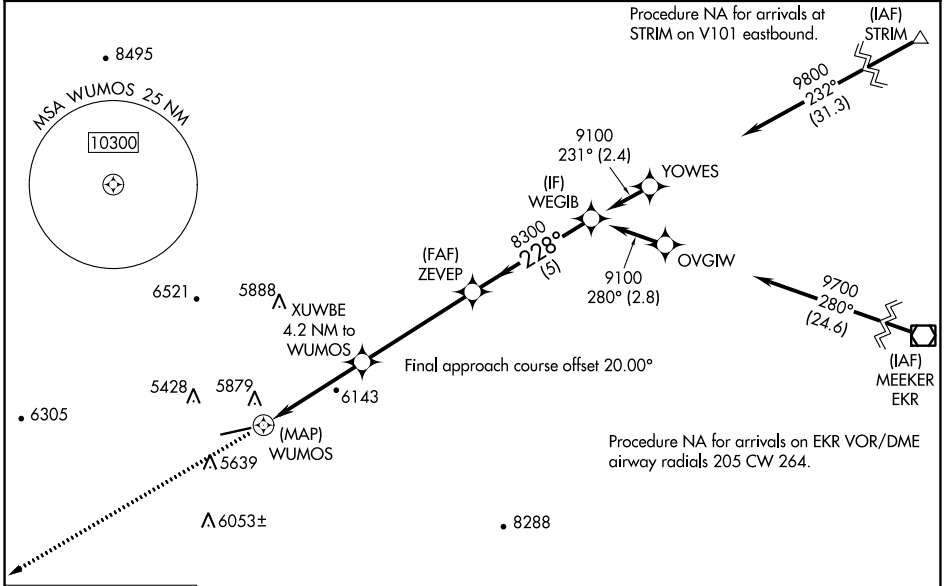
RNP APCH - GPS.

Rwy 25 helicopter visibility reduction below 1 SM NA. Procedure NA at night.

-18°C

MISSED APPROACH: Climb to 10800 direct ELIZZ and hold, continue climb-in hold to 10800.

AWOS-3PT 119.025	DENVER CENTER 134.5 327.8	UNICOM 122.8 (CTAF) Ø
----------------------------	-------------------------------------	---------------------------------



ELEV 5278	TDZE 5278
-----------	-----------

MIRL Rwy 7-25 Ø
REIL Rws 7 and 25 Ø

CATEGORY	A	B	C	D
LP MDA	6400-1¼ 1122 (1200-1¼)	6400-1½ 1122 (1200-1½)	6400-3 1122 (1200-3)	NA
LNAV MDA	6400-1¼ 1122 (1200-1¼)	6400-1½ 1122 (1200-1½)	6400-3 1122 (1200-3)	NA
CIRCLING	6900-1¼ 1622 (1700-1¼)	6900-1½ 1622 (1700-1½)	7000-3 1722 (1800-3)	NA

SW-1, 28 NOV 2024 to 26 DEC 2024

SW-1, 28 NOV 2024 to 26 DEC 2024