

WAAS CH 99746 W31A	APP CRS 331°	Rwy Idg TDZE Apt Elev	5600 4230 4234
--	------------------------	-----------------------------	---

RNAV (GPS) RWY 31

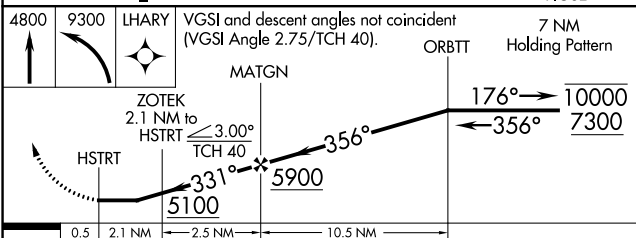
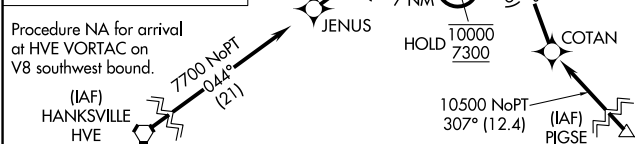
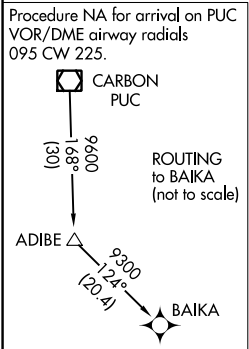
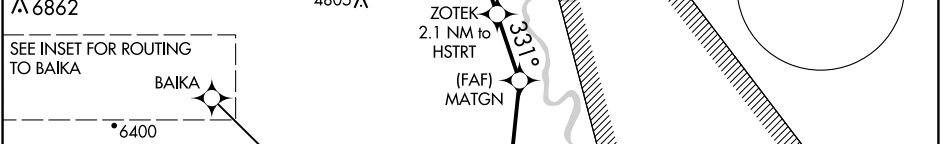
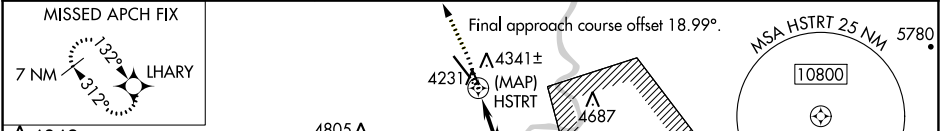
GREEN RIVER MUNI (U34)

RNP APCH - GPS.

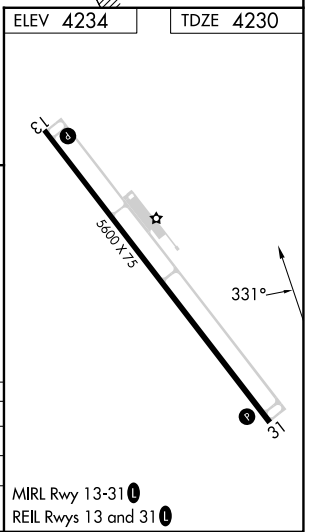
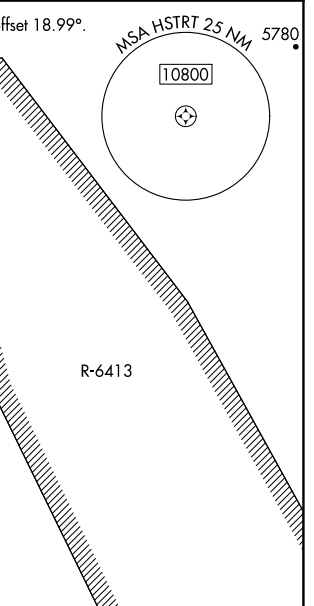
NA Rwy 31 helicopter visibility reduction below $\frac{3}{4}$ SM NA. Use Moab altimeter setting; when not received, use Hanksville altimeter setting and increase all MDAs 20 feet and LP visibility Cat C/D $\frac{1}{2}$ SM, and Circling visibility Cat D $\frac{1}{2}$ SM. Circling NA for Cats C and D northeast of Rwy 13-31.

MISSED APPROACH: Climb to 4800, then climbing left turn to 9300 direct LHARY and hold, continue climb-in-hold to 9300.

CNY ASOS 118.525	SALT LAKE CENTER 133.6 269.25	UNICOM 122.8 (CTAF)
----------------------------	---	-------------------------------



	0.5	2.1 NM	2.5 NM	10.5 NM	
CATEGORY	A	B	C	D	
LP MDA	4640-1	410 (500-1)	4640-1 $\frac{1}{2}$	410 (500-1 $\frac{1}{2}$)	
LN AV MDA	4700-1	470 (500-1)	4700-1 $\frac{3}{8}$	470 (500-1 $\frac{3}{8}$)	
CIRCLING	4800-1 566 (600-1)	4840-1 606 (700-1)	4840-1 $\frac{3}{4}$ 606 (700-1 $\frac{3}{4}$)	5100-2 $\frac{3}{4}$ 866 (900-2 $\frac{3}{4}$)	



SW-4, 28 NOV 2024 to 26 DEC 2024

SW-4, 28 NOV 2024 to 26 DEC 2024