

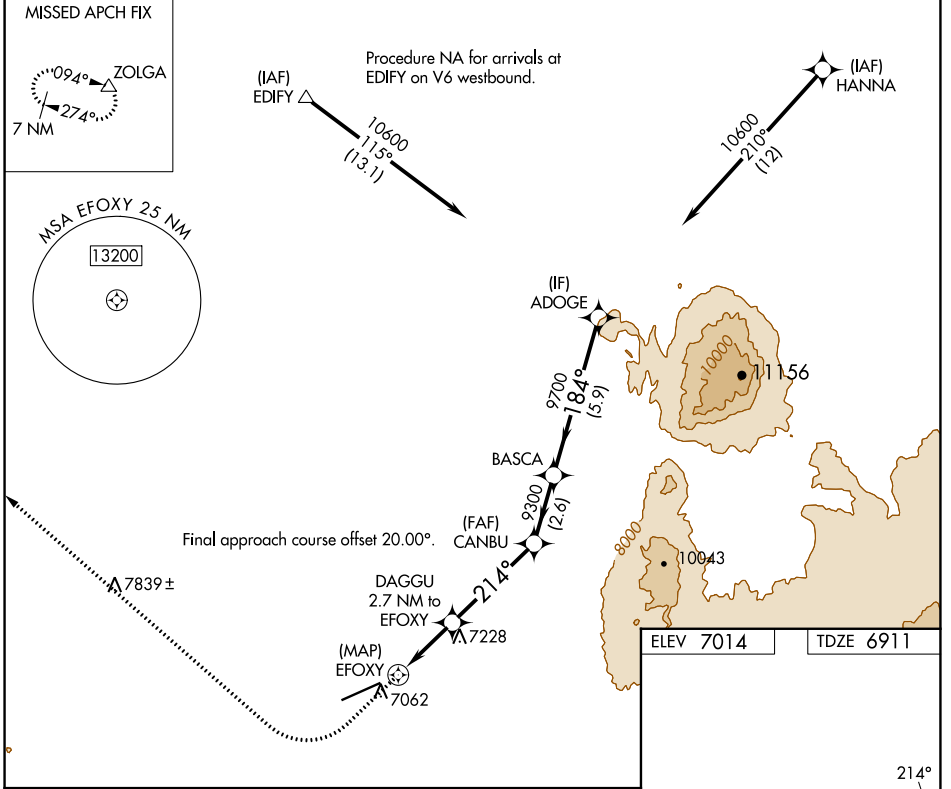
APP CRS 214°	Rwy Idg 8801
TDZE 6911	Apt Elev 7014

RNAV (GPS) RWY 23

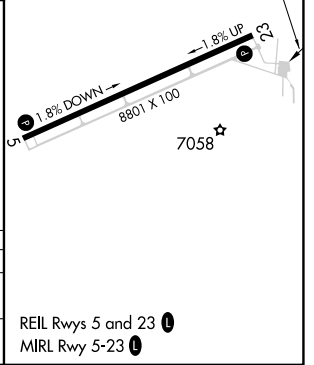
SHIVELY FLD (SAA)

RNP APCH - GPS.	MISSED APPROACH: Climb to 7800 then climbing right turn to 11000 direct ZOLGA and hold.
Rwy 23 helicopter visibility reduction below 3/4 SM NA.	

AWOS-3PT 118.175	DENVER CENTER 132.1 254.35	UNICOM 122.8 (CTAF) ①
----------------------------	--------------------------------------	---------------------------------



7800	11000	ZOLGA					
<p>DAGGU 2.7 NM to EFOXY</p> <p>EFOXY 1.5 NM to EFOXY</p> <p>8000</p> <p>214°</p> <p>3.00° TCH 47</p> <p>9300</p> <p>9700</p> <p>184°</p> <p>10600</p>							
	0.7	1.5 NM	1.2 NM	4.1 NM	2.6 NM	5.9 NM	
CATEGORY	A		B		C		D
RNAV MDA	7620-1 709 (700-1)		7620-2 709 (700-2)				
CIRCLING	7620-1 606 (700-1)		7740-2 726 (800-2)		7860-2 846 (900-2 3/4)		



NW-1, 28 NOV 2024 to 26 DEC 2024

NW-1, 28 NOV 2024 to 26 DEC 2024