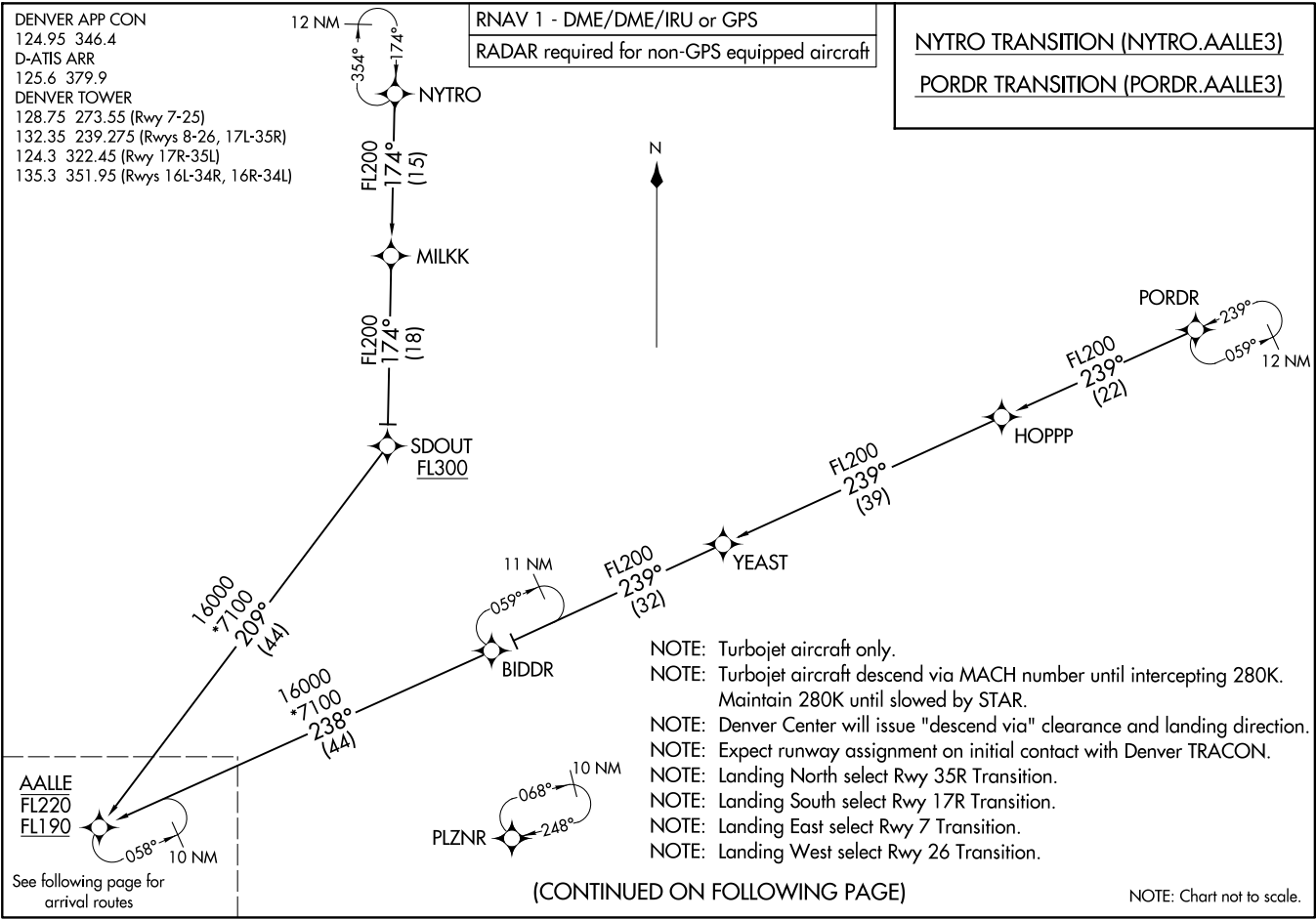


(AALLE.AALLE3) 07OCT21  
**AALLE THREE ARRIVAL (RNAV) Transition Routes**  
 DENVER, COLORADO  
 DENVER INTL (DEN)

DENVER APP CON  
 124.95 346.4  
 D-ATIS ARR  
 125.6 379.9  
 DENVER TOWER  
 128.75 273.55 (Rwy 7-25)  
 132.35 239.275 (Rwys 8-26, 17L-35R)  
 124.3 322.45 (Rwy 17R-35L)  
 135.3 351.95 (Rwys 16L-34R, 16R-34L)

RNAV 1 - DME/DME/IRU or GPS  
 RADAR required for non-GPS equipped aircraft

NYTRO TRANSITION (NYTRO.AALLE3)  
PORDR TRANSITION (PORDR.AALLE3)



- NOTE: Turbojet aircraft only.
- NOTE: Turbojet aircraft descend via MACH number until intercepting 280K. Maintain 280K until slowed by STAR.
- NOTE: Denver Center will issue "descend via" clearance and landing direction.
- NOTE: Expect runway assignment on initial contact with Denver TRACON.
- NOTE: Landing North select Rwy 35R Transition.
- NOTE: Landing South select Rwy 17R Transition.
- NOTE: Landing East select Rwy 7 Transition.
- NOTE: Landing West select Rwy 26 Transition.

(CONTINUED ON FOLLOWING PAGE)

NOTE: Chart not to scale.

(AALLE.AALLE3) 23110  
**AALLE THREE ARRIVAL (RNAV) Transition Routes**  
 AL-9077 (FAA)  
 DENVER INTL (DEN)  
 DENVER, COLORADO

AALIE THREE ARRIVAL(RNAV) Arrival Routes  
(AALIE:AALIE3) 07OCT21

(AALIE:AALIE3) 23110  
AALIE THREE ARRIVAL(RNAV) Arrival Routes  
AL-9077 (FAA)

DENVER INTL (DEN)  
DENVER, COLORADO

DENVER APP CON  
124.95 346.4  
D-ATIS ARR  
125.6 379.9  
DENVER TOWER  
128.75 273.55 (Rwy 7-25)  
132.35 239.275 (Rwys 8-26, 17L-35R)  
124.3 322.45 (Rwy 17R-35L)  
135.3 351.95 (Rwys 16L-34R, 16R-34L)

RNAV 1 - DME/DME/IRU or GPS  
RADAR required for non-GPS equipped aircraft

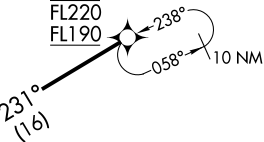
AALIE  
FL220  
FL190

KIPPR  
12000 210K

Ldg Rwys 16L/R and 17L/R

HIGUN  
14000 210K

HEDDD  
FL210 250K  
16000



CRUNK  
14000

Ldg Rwys 25 and 26

DEELO  
17000  
15000

JEPHF  
15000 250K  
13000

FULLA  
15000 250K  
13000

HAITR  
11000 210K

Ldg Rwys 7 and 8

FFFAT

DOGGG  
11000 210K

HIMOM  
11000 210K

Ldg Rwys 34L/R

- NOTE: Turbojet aircraft only.
- NOTE: Turbojet aircraft descend via MACH number until intercepting 280K. Maintain 280K until slowed by STAR.
- NOTE: Denver Center will issue "descend via" clearance and landing direction.
- NOTE: Expect runway assignment on initial contact with Denver TRACON.
- NOTE: Landing North select Rwy 35R Transition.
- NOTE: Landing South select Rwy 17R Transition.
- NOTE: Landing East select Rwy 7 Transition.
- NOTE: Landing West select Rwy 26 Transition.

(NARRATIVE ON FOLLOWING PAGE)

NOTE: Chart not to scale.

DENVER, COLORADO  
DENVER INTL (DEN)

ARRIVAL ROUTE DESCRIPTION

From AALLE on track 231° to cross HEDDD between 16000 and FL210 and at 250K.

LANDING RUNWAYS 7, 8: From HEDDD on track 211° to cross DEELO between 15000 and 17000, then on track 222° to cross JEPHF between 13000 and 15000 and at 250K, then on track 236° to HAZLT, then on track 263° to cross HAIR at 11000 and at 210K, then on track 263°. Expect RADAR vectors to final approach course.

LANDING RUNWAYS 16L/R, 17L/R: From HEDDD on track 269° to cross HIGUN at 14000 and at 210K, then on track 265° to cross KIPPR at 12000 and at 210K. Expect ILS or LOC RWY 16L/R or ILS or LOC RWY 17L/R approach.

LANDING RUNWAYS 25, 26: From HEDDD on track 217° to cross CRUNK at 14000, then on track 217°. Expect RADAR vectors to final approach course.

LANDING RUNWAYS 34L/R: From HEDDD on track 211° to cross DEELO between 15000 and 17000, then on track 222° to cross JEPHF between 13000 and 15000 and at 250K, then on track 236° to HAZLT, then on track 236° to GRILA, then on track 173° to cross HIMOM at 11000 and at 210K, then on track 173°. Expect RADAR vectors to final approach course.

LANDING RUNWAYS 35L/R: From HEDDD on track 211° to cross DEELO between 15000 and 17000, then on track 211° to cross FULLA between 13000 and 15000 and at 250K, then on track 211° to FFFAT, then on track 173° to cross DOGGG at 11000 and at 210K, then on track 173°. Expect RADAR vectors to final approach course.

LOST COMMUNICATIONS: In the event of lost communications prior to runway transition assignment, when DEN is landing south, execute the ILS RWY 17R, when DEN is landing north, execute the ILS RWY 35R.

SW-1, 28 NOV 2024 to 26 DEC 2024

SW-1, 28 NOV 2024 to 26 DEC 2024