

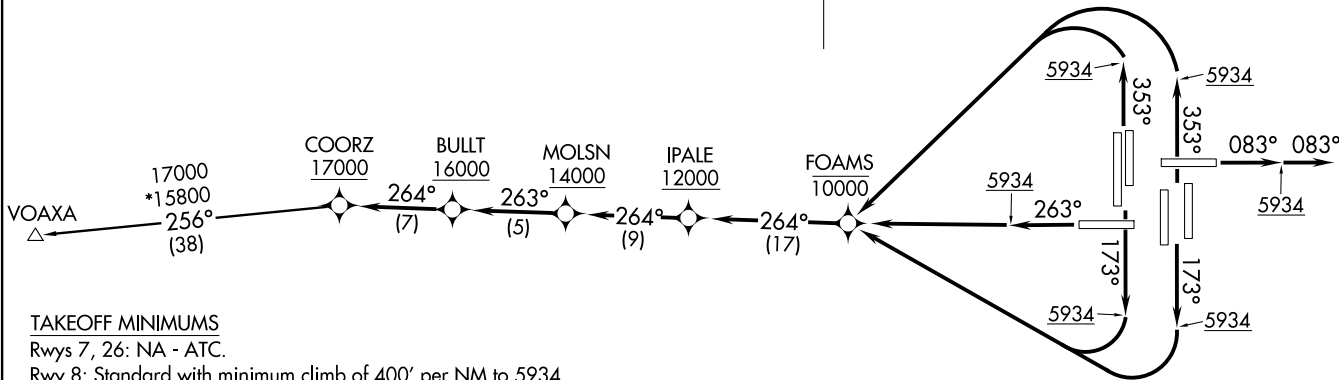
COORZ SIX DEPARTURE (RNAV)
(COORZ6, COORZ) 26MAR20

DENVER, COLORADO
DENVER INTL (DEN)

NOTE: DME/DME/IRU or GPS required.
 NOTE: RNAV 1.
 NOTE: Turbojets only.
 NOTE: Takeoff Rwy 8, RADAR required.
 NOTE: Takeoff Rws 16L/R, 17L/R, 25, 34L/R, 35L/R, - RADAR required for non-GPS equipped aircraft.
 NOTE: Accelerate to 250K or greater upon reaching 10000. If slower speed is required to meet crossing restrictions advise CLNC DEL prior to taxi.

**TOP ALTITUDE:
FL230**

D-ATIS DEP 134.025
 CLNC DEL 118.75
 CPDLC
 DENVER DEP CON 126.1 360.75



TAKEOFF MINIMUMS

Rws 7, 26: NA - ATC.

- Rwy 8: Standard with minimum climb of 400' per NM to 5934.
- Rwy 16L: Standard with minimum climb of 400' per NM to 5934, then minimum climb of 215' per NM to 16000.
- Rwy 16R: Standard with minimum climb of 480' per NM to 5934, then minimum climb of 215' per NM to 16000.
- Rwy 17L: Standard with minimum climb of 400' per NM to 5934.
- Rwy 17R: Standard with minimum climb of 400' per NM to 5934, then minimum climb of 205' per NM to 16000.
- Rwy 25: Standard with minimum climb of 425' per NM to 5934, then minimum climb of 225' per NM to 16000.
- Rwy 34L: Standard with minimum climb of 400' per NM to 5934, then minimum climb of 215' per NM to 16000.
- Rwy 34R: Standard with minimum climb of 400' per NM to 5934, then minimum climb of 210' per NM to 16000.
- Rwy 35L: Standard with minimum climb of 360' per NM to 5934, then minimum climb of 205' per NM to 16000.
- Rwy 35R: Standard with minimum climb of 375' per NM to 5934.

(NARRATIVE ON FOLLOWING PAGE)

NOTE: Chart not to scale.

(COORZ6, COORZ) 20086
COORZ SIX DEPARTURE (RNAV)

AL-9077 (FAA)

DENVER INTL (DEN)
DENVER, COLORADO



DEPARTURE ROUTE DESCRIPTION
SEE ADDITIONAL REQUIREMENTS ON AAUP

TAKEOFF RUNWAY 8: Climb on heading 083° to 5934, then on heading 083° or as assigned by ATC, expect vectors to cross IPALE at or above 12000, thence. . . .

TAKEOFF RUNWAYS 16L/R, 17L/R: Climb on heading 173° to 5934, then climbing right turn direct to cross FOAMS at or below 10000, then on track 264° to cross IPALE at or above 12000, thence. . . .

TAKEOFF RUNWAY 25: Climb on heading 263° to 5934, then climb direct to cross FOAMS at or below 10000, then on track 264° to cross IPALE at or above 12000, thence. . . .

TAKEOFF RUNWAYS 34L/R, 35L/R: Climb on heading 353° to 5934, then climbing left turn direct to cross FOAMS at or below 10000, then on track 264° to cross IPALE at or above 12000, thence. . . .

. . . .on track 264° to cross MOLSN at or above 14000, then on track 263° to cross BULLT at or above 16000, then on track 264° to cross COORZ at or above 17000. Then on (transition) maintain FL230 or filed lower altitude. Expect higher filed altitude ten minutes after departure.

VOAXA TRANSITION (COORZ6.VOAXA)

SW-1, 28 NOV 2024 to 26 DEC 2024

SW-1, 28 NOV 2024 to 26 DEC 2024