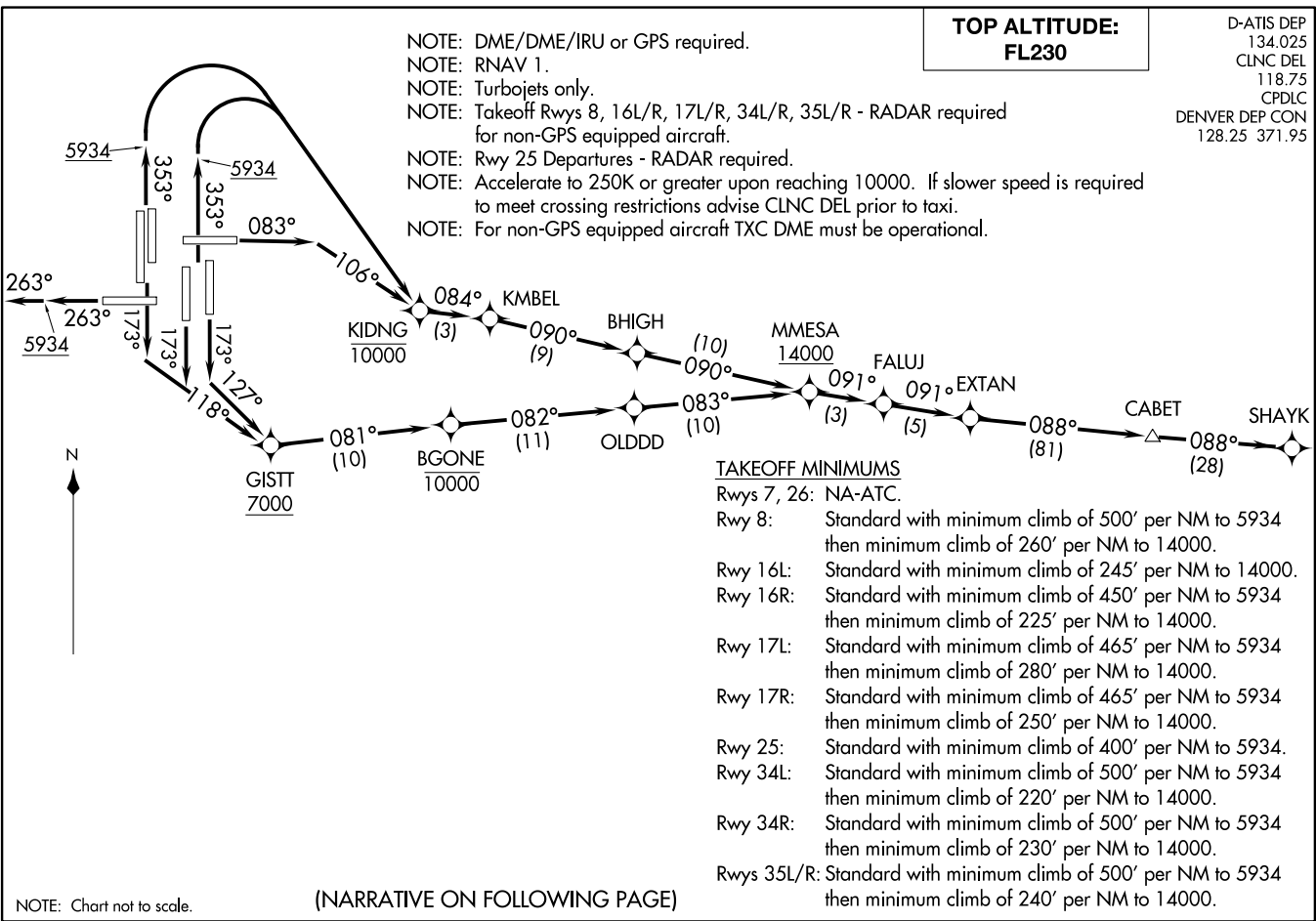


EXTAN SEVEN DEPARTURE (RNAV)
(EXTAN7.SHAVK) 17JUN21

DENVER, COLORADO
DENVER INTL (DEN)



NOTE: DME/DME/IRU or GPS required.
 NOTE: RNAV 1.
 NOTE: Turbojets only.
 NOTE: Takeoff Rwy 8, 16L/R, 17L/R, 34L/R, 35L/R - RADAR required for non-GPS equipped aircraft.
 NOTE: Rwy 25 Departures - RADAR required.
 NOTE: Accelerate to 250K or greater upon reaching 10000. If slower speed is required to meet crossing restrictions advise CLNC DEL prior to taxi.
 NOTE: For non-GPS equipped aircraft TXC DME must be operational.

**TOP ALTITUDE:
FL230**

D-ATIS DEP 134.025
 CLNC DEL 118.75
 CPDLC
 DENVER DEP CON 128.25 371.95

TAKEOFF MINIMUMS

- Rwys 7, 26: NA-ATC.
 Rwy 8: Standard with minimum climb of 500' per NM to 5934 then minimum climb of 260' per NM to 14000.
 Rwy 16L: Standard with minimum climb of 245' per NM to 14000.
 Rwy 16R: Standard with minimum climb of 450' per NM to 5934 then minimum climb of 225' per NM to 14000.
 Rwy 17L: Standard with minimum climb of 465' per NM to 5934 then minimum climb of 280' per NM to 14000.
 Rwy 17R: Standard with minimum climb of 465' per NM to 5934 then minimum climb of 250' per NM to 14000.
 Rwy 25: Standard with minimum climb of 400' per NM to 5934.
 Rwy 34L: Standard with minimum climb of 500' per NM to 5934 then minimum climb of 220' per NM to 14000.
 Rwy 34R: Standard with minimum climb of 500' per NM to 5934 then minimum climb of 230' per NM to 14000.
 Rwys 35L/R: Standard with minimum climb of 500' per NM to 5934 then minimum climb of 240' per NM to 14000.

(NARRATIVE ON FOLLOWING PAGE)

NOTE: Chart not to scale.

(EXTAN7.SHAVK) 21168
EXTAN SEVEN DEPARTURE (RNAV)

AL-9077 (FAA)

DENVER INTL (DEN)
DENVER, COLORADO



DEPARTURE ROUTE DESCRIPTION

TAKEOFF RUNWAY 8: Climb on heading 083° to intercept course 106° to cross KIDNG at or below 10000, then on track 084° to KMBEL, then on track 090° to BHIGH, then on track 090° to cross MMESA at or above 14000, thence

TAKEOFF RUNWAYS 16L/R, 17R: Climb on heading 173° to intercept course 118° to cross GISTT at or above 7000, then on track 081° to cross BGONE at or below 10000, then on track 082° to OLDDD, then on track 083° to cross MMESA at or above 14000, thence

TAKEOFF RUNWAY 17L: Climb on heading 173° to intercept course 127° to cross GISTT at or above 7000, then on track 081° to cross BGONE at or below 10000, then on track 082° to OLDDD, then on track 083° to cross MMESA at or above 14000, thence

TAKEOFF RUNWAY 25: Climb on heading 263° to 5934, then continue climb on heading 263° or as assigned by ATC for RADAR vectors to EXTAN, thence

TAKEOFF RUNWAYS 34L/R, 35L/R: Climb on heading 353° to 5934, then climbing right turn direct to cross KIDNG at or below 10000, then on track 084° to KMBEL, then on track 090° to BHIGH, then on track 090° to cross MMESA at or above 14000, thence

. . . . on depicted route to SHAYK, maintain FL230 or filed lower altitude, expect higher filed altitude 10 minutes after departure.

SW-1, 28 NOV 2024 to 26 DEC 2024

SW-1, 28 NOV 2024 to 26 DEC 2024