

# HHOTH TWO DEPARTURE (RNAV)

AL-9077 (FAA)

DENVER INTL (DEN)  
DENVER, COLORADO

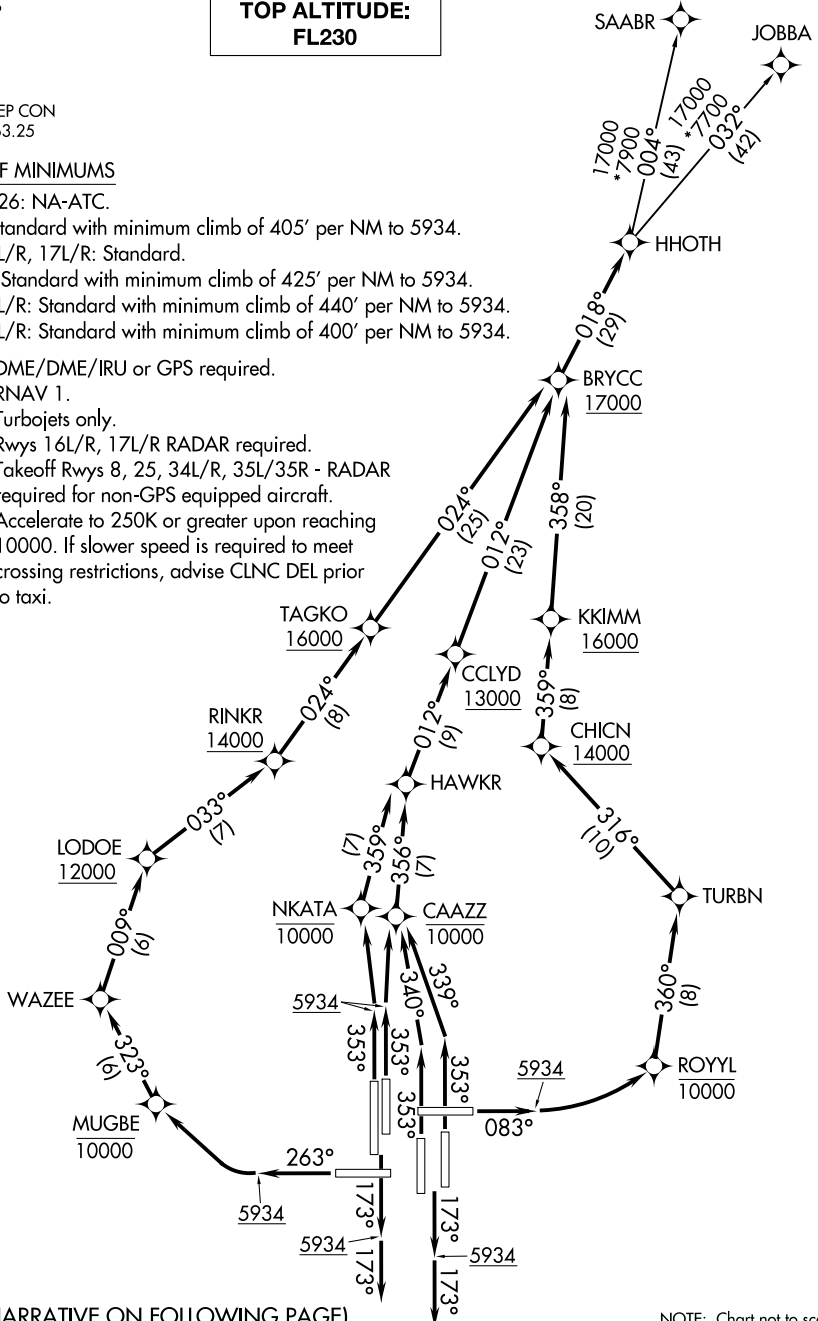
D-ATIS DEP  
134.025  
CLNC DEL  
118.75  
CPDLC  
DENVER DEP CON  
127.05 363.25

**TOP ALTITUDE:  
FL230**

### TAKEOFF MINIMUMS

- Rwys 7, 26: NA-ATC.
- Rwy 8: Standard with minimum climb of 405' per NM to 5934.
- Rwys 16L/R, 17L/R: Standard.
- Rwy 25: Standard with minimum climb of 425' per NM to 5934.
- Rwys 34L/R: Standard with minimum climb of 440' per NM to 5934.
- Rwys 35L/R: Standard with minimum climb of 400' per NM to 5934.

- NOTE: DME/DME/IRU or GPS required.
- NOTE: RNAV 1.
- NOTE: Turbojets only.
- NOTE: Rwys 16L/R, 17L/R RADAR required.
- NOTE: Takeoff Rwys 8, 25, 34L/R, 35L/35R - RADAR required for non-GPS equipped aircraft.
- NOTE: Accelerate to 250K or greater upon reaching 10000. If slower speed is required to meet crossing restrictions, advise CLNC DEL prior to taxi.



SW-1, 28 NOV 2024 to 26 DEC 2024

SW-1, 28 NOV 2024 to 26 DEC 2024

(NARRATIVE ON FOLLOWING PAGE)

NOTE: Chart not to scale.

# HHOTH TWO DEPARTURE (RNAV)



DEPARTURE ROUTE DESCRIPTION  
SEE ADDITIONAL REQUIREMENTS ON AAUP

TAKEOFF RUNWAY 8: Climb on heading 083° to 5934, then left turn direct ROYYL at or below 10000, then on track 360° to TURBN, then on track 316° to cross CHICN at or above 14000, then on track 359° to cross KKIMM at or above 16000, then on track 358° to cross BRYCC at or above 17000, thence. . . .

TAKEOFF RUNWAYS 16L/R, 17L/R: Climb on heading 173° to 5934, then on heading 173° or as assigned by ATC, expect vectors to cross BRYCC at or above 17000, thence. . . .

TAKEOFF RUNWAY 25: Climb on heading 263° to 5934, then right turn direct MUGBE at or below 10000, then on track 323° to WAZEE, then on track 009° to cross LODOE at or above 12000, then on track 033° to cross RINKR at or above 14000, then on track 024° to cross TAGKO at or above 16000, then on track 024° to cross BRYCC at or above 17000, thence. . . .

TAKEOFF RUNWAY 34L: Climb on heading 353° to 5934, then direct NKATA at or below 10000, then on track 359° to HAWKR, then on track 012° to cross CCLYD at or above 13000, then on track 012° to cross BRYCC at or above 17000, thence. . . .

TAKEOFF RUNWAY 34R: Climb on heading 353° to 5934, then direct CAAZZ at or below 10000, then on track 356° to HAWKR, then on track 012° to cross CCLYD at or above 13000, then on track 012° to cross BRYCC at or above 17000, thence. . . .

TAKEOFF RUNWAY 35L: Climb on heading 353° to intercept course 340° to cross CAAZZ at or below 10000, then on track 356° to HAWKR, then on track 012° to cross CCLYD at or above 13000, then on track 012° to cross BRYCC at or above 17000, thence. . . .

TAKEOFF RUNWAY 35R: Climb on heading 353° to intercept course 339° to cross CAAZZ at or below 10000, then on track 356° to HAWKR, then on track 012° to cross CCLYD at or above 13000, then on track 012° to cross BRYCC at or above 17000, thence. . . .

. . . .on track 018° to HHOTH. Then on (transition), maintain FL230 or filed lower altitude. Expect higher filed altitude ten minutes after departure.

JOBBA TRANSITION (HHOTH2.JOBBA)

SAABR TRANSITION (HHOTH2.SAABR)

SW-1, 28 NOV 2024 to 26 DEC 2024

SW-1, 28 NOV 2024 to 26 DEC 2024