

LOC/DME I-OUF 111.1 Chan 48	APP CRS 353°	Rwy Idg 12000 TDZE 5354 Apt Elev 5434
---	------------------------	--

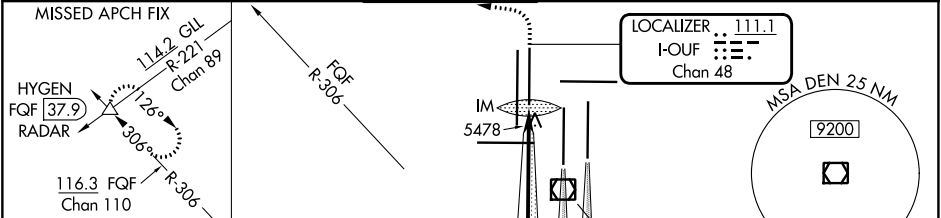
ILS RWY 34R (CAT II & III)

DENVER INTL (DEN)

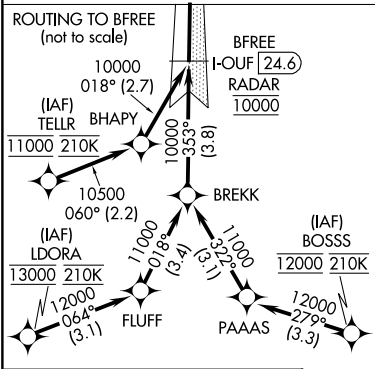
Simultaneous approach authorized with Rwy 35L/R.
CAT II: RVR 1000 authorized with specific OPSPEC, MSPEC or LOA approval and use of autoland or HUD to touchdown.

MISSED APPROACH: Climb to 5800 then climbing left turn to 10000 on heading 270° and on FGF VORTAC R-306 to HYGEN/FQF 37.9 DME/RADAR and hold.

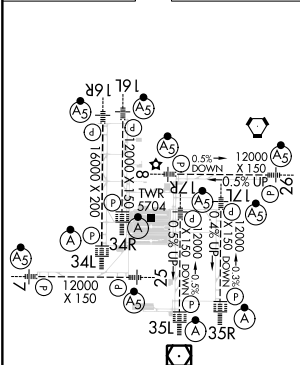
D-ATIS 125.6 379.9 (ARR) 134.025 (DEP)	DENVER APP CON 119.3 307.3 (N) 120.35 379.3 (S)	DENVER TOWER 135.3 351.95	GND CON 121.35 379.175 (W) 121.85 377.1 (E)	CLNC DEL 118.75	CPDLC
--	---	-------------------------------------	---	---------------------------	-------



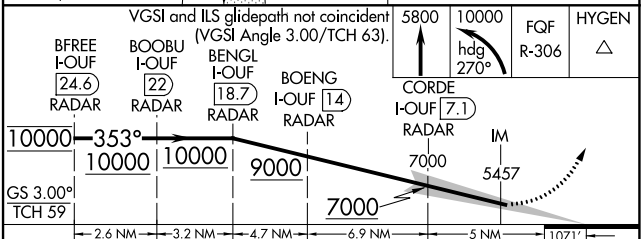
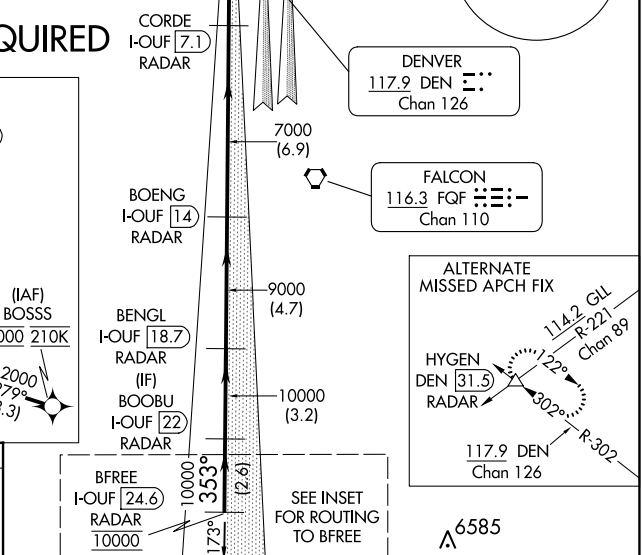
RADAR or GPS REQUIRED



ELEV 5434	D	TDZE 5354
-----------	---	-----------



DENVER, COLORADO
Amdt 3A 11DEC14



CATEGORY	A	B	C	D
S-ILS 34R	CAT II RA 155/12 100 DA 5454			
S-ILS 34R	CAT IIIa RVR 07			
S-ILS 34R	CAT IIIb RVR 03			
S-ILS 34R	CAT IIIc NA			

CATEGORY II & III ILS - SPECIAL AIRCREW & AIRCRAFT CERTIFICATION REQUIRED

SW-1, 28 NOV 2024 to 26 DEC 2024

SW-1, 28 NOV 2024 to 26 DEC 2024