


LOC/DME I-BXP <b>110.15</b> Chan <b>38 (Y)</b>	APP CRS <b>173°</b>	Rwy ldg <b>12000</b> TDZE <b>5339</b> Apt Elev <b>5434</b>
--	------------------------	--

# ILS or LOC RWY 17L

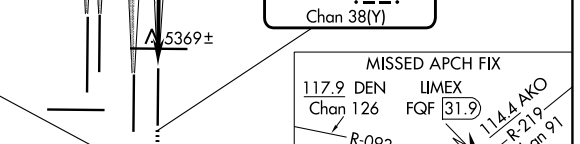
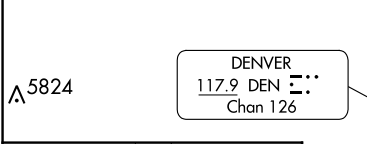
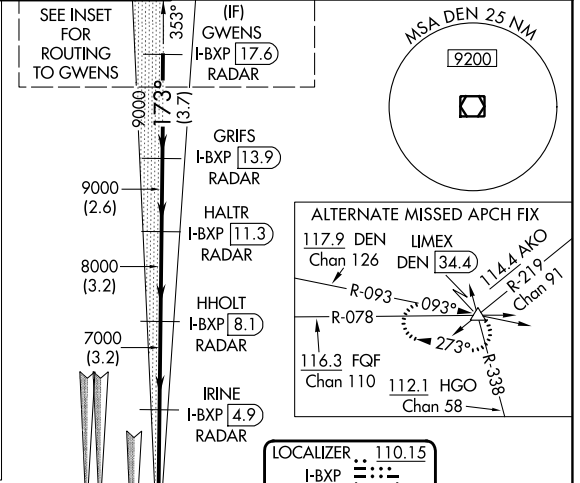
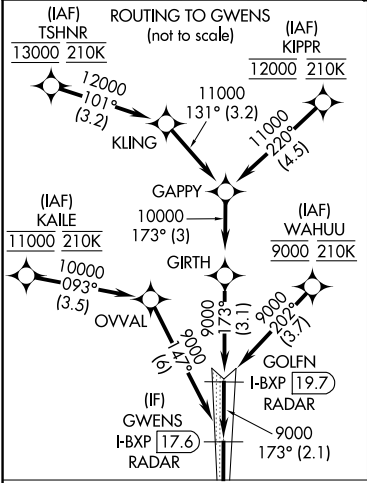
DENVER INTL (DEN)

▼ For inoperative MALSR, increase S-LOC Cats C/D visibility to RVR 4500. S-LOC 17L DME or RADAR required. Simultaneous approaches authorized with Rwy 17R and 16L/16R.  
#RVR 1800 authorized with the use of FD or AP or HUD to DA.

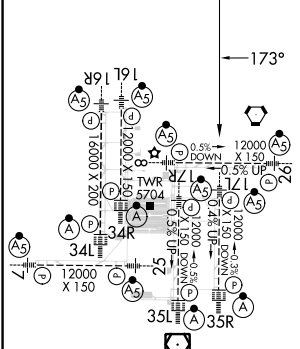
MALSR 

MISSED APPROACH: Climb to 5900 then climbing left turn to 10000 on heading 120° and FQF VORTAC R-078 to LIMEX INT/FQF 31.9 DME and hold.

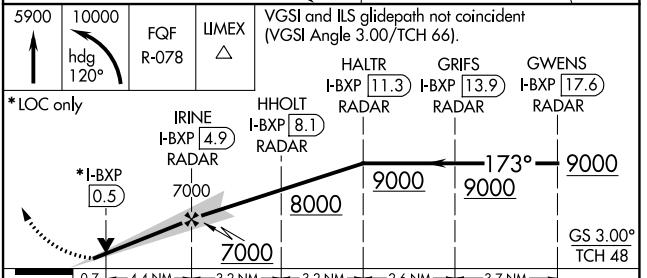
D-ATIS <b>125.6 379.9 (ARR)</b> <b>134.025 (DEP)</b>	DENVER APP CON <b>119.3 307.3 (N)</b> <b>120.35 379.3 (S)</b>	DENVER TOWER <b>132.35 239.275</b>	GND CON <b>121.35 379.175 (W)</b> <b>121.85 377.1 (E)</b>	CLNC DEL <b>118.75</b>	CPDLC
--	---	---------------------------------------	---	---------------------------	-------



ELEV 5434	D	TDZE 5339
-----------	---	-----------



## RADAR or GPS REQUIRED



HIRL all Rwys  
TDZ/CL Rwys 7, 16L, 16R, 17R, 26, 34L, 34R, 35L, 35R

FAF to MAP 5.1 NM

Knots	60	90	120	150	180
Min:Sec	5:06	3:24	2:33	2:02	1:42

CATEGORY	A	B	C	D
S-ILS 17L	# 5539/24 200 (200-½)			
S-LOC 17L	5620/24 281 (200-½)			

SW-1, 28 NOV 2024 to 26 DEC 2024

SW-1, 28 NOV 2024 to 26 DEC 2024