

LOC/DME I-ACX <b>108.5</b> Chan 22	APP CRS <b>173°</b>	Rwy Idg TDZE Apt Elev <b>12000</b> <b>5392</b> <b>5434</b>
--	------------------------	---

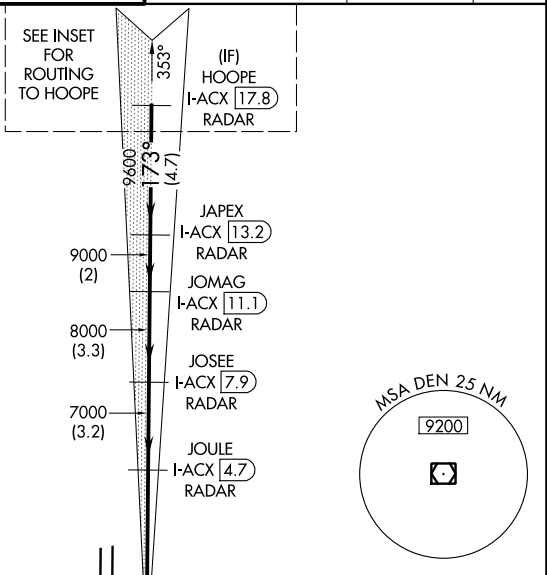
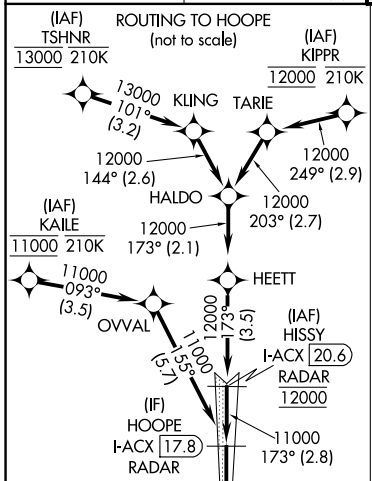
# ILS or LOC RWY 17R

DENVER INTL (DEN)

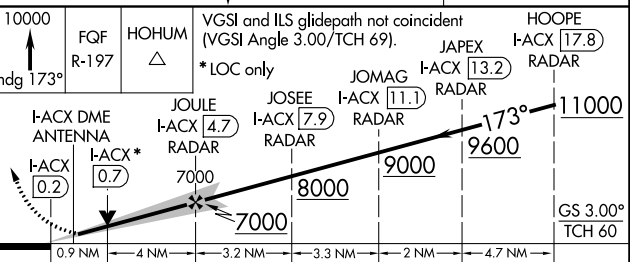
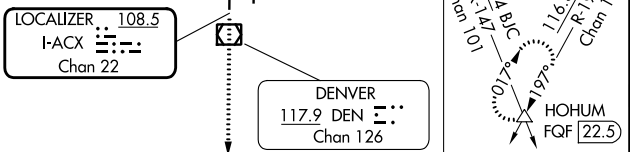
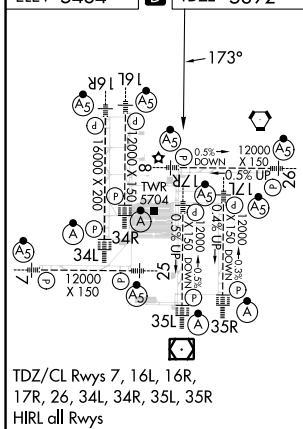
DME or RADAR required for LOC only.  
RNAV 1-GPS or RADAR required for procedure entry.  
Simultaneous approach authorized. For inop ALS, increase S-17R LOC Cat C/D visibility to RVR 5500.

MALS R MISSED APPROACH: Climb to 10000 on heading 173° and on FQF VORTAC R-197 to HOHUM INT/ FQF 22.5 DME and hold.

D-ATIS <b>125.6 379.9</b> (ARR) <b>134.025</b> (DEP)	DENVER APP CON <b>119.3 307.3</b> (N) <b>120.35 379.3</b> (S)	DENVER TOWER <b>124.3 322.45</b>	GND CON <b>121.35 379.175</b> (W) <b>121.85 377.1</b> (E)	CLNC DEL <b>118.75</b>	CPDLC
--	---	-------------------------------------	---	---------------------------	-------



**A5824**  
ELEV 5434 **D** TDZE 5392



FAF to MAP 4.9 NM					
Knots	60	90	120	150	180
Min:Sec	4:54	3:16	2:27	1:58	1:38
CATEGORY	A	B	C	D	
S-ILS 17R	5592/18 200 (200-1/2)				
S-LOC 17R	5720/24	328 (300-1/2)	5720/30	328 (300-5/8)	

SW-1, 28 NOV 2024 to 26 DEC 2024

SW-1, 28 NOV 2024 to 26 DEC 2024