

(ROCKIES DEN) 24137  
ROCKIES SIX DEPARTURE

AL-9077 (FAA)

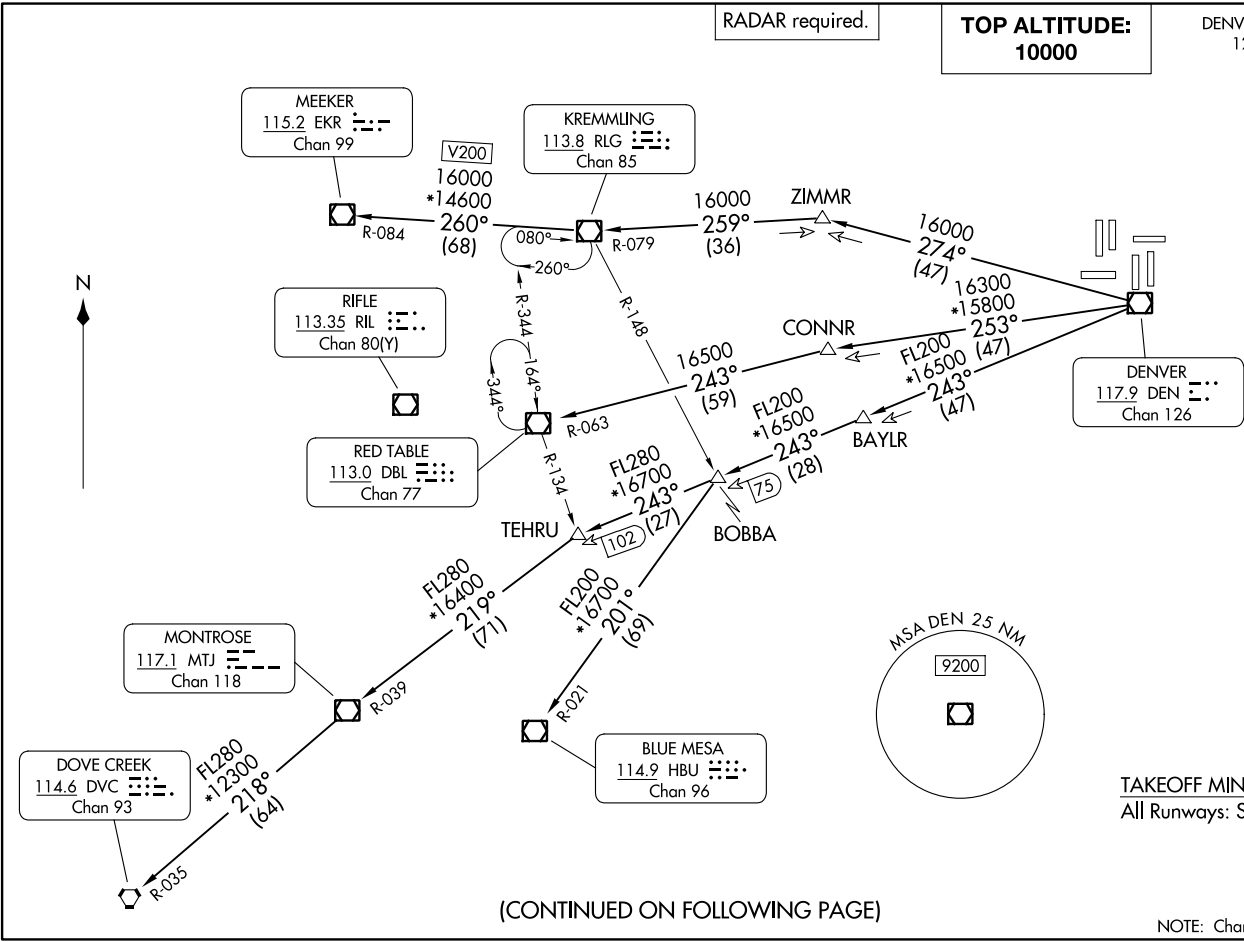
DENVER INTL (DEN)  
DENVER, COLORADO

DENVER DEP CON  
126.1 360.75  
CLNC DEL  
118.75  
CPDLC

**TOP ALTITUDE:  
10000**

RADAR required.

SW-1, 28 NOV 2024 to 26 DEC 2024



(CONTINUED ON FOLLOWING PAGE)

NOTE: Chart not to scale.

SW-1, 28 NOV 2024 to 26 DEC 2024

ROCKIES SIX DEPARTURE  
(ROCKIES DEN) 16MAY24

DENVER, COLORADO  
DENVER INTL (DEN)



DEPARTURE ROUTE DESCRIPTION

TAKEOFF ALL RUNWAYS: Fly assigned heading for RADAR vectors to assigned route. Climb and maintain 10000 or ATC assigned lower altitude. Expect filed altitude 10 minutes after departure.

LOST COMMUNICATIONS: If no transmissions are received within one minute after departure, maintain assigned heading until 7000 feet, then climb to filed altitude direct DEN VOR/DME, then on assigned transition. If filed altitude is above 10000 feet, cross DEN VOR/DME at or above 11000 feet.

BLUE MESA TRANSITION (ROCKI6.HBU): From over DEN VOR/DME on DEN R-243 and HBU R-021 to HBU VOR/DME.

DOVE CREEK TRANSITION (ROCKI6.DVC): From over DEN VOR/DME on DEN R-243 and MTJ R-039 to MTJ VOR/DME, then on MTJ R-218 and DVC R-035 to DVC VORTAC.

KREMMLING TRANSITION (ROCKI6.RLG): From over DEN VOR/DME on DEN R-274 and RLG R-079 to RLG VOR/DME.

MEEKER TRANSITION (ROCKI6.EKR): From over DEN VOR/DME on DEN R-274 and RLG R-079 to RLG VOR/DME, then on RLG R-260 and EKR R-084 to EKR VOR/DME.

MONTROSE TRANSITION (ROCKI6.MTJ): From over DEN VOR/DME on DEN R-243 and MTJ R-039 to MTJ VOR/DME.

RED TABLE TRANSITION (ROCKI6.DBL): From over DEN VOR/DME on DEN R-253 and DBL R-063 to DBL VOR/DME.

SW-1, 28 NOV 2024 to 26 DEC 2024

SW-1, 28 NOV 2024 to 26 DEC 2024