

| | | |
|--|------------------------|--|
| WAAS CH 45719 W35B | APP CRS 353° | Rwy Idg 12000 TDZE 5370 Apt Elev 5434 |
|--|------------------------|--|

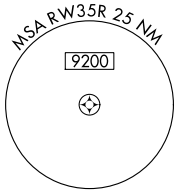
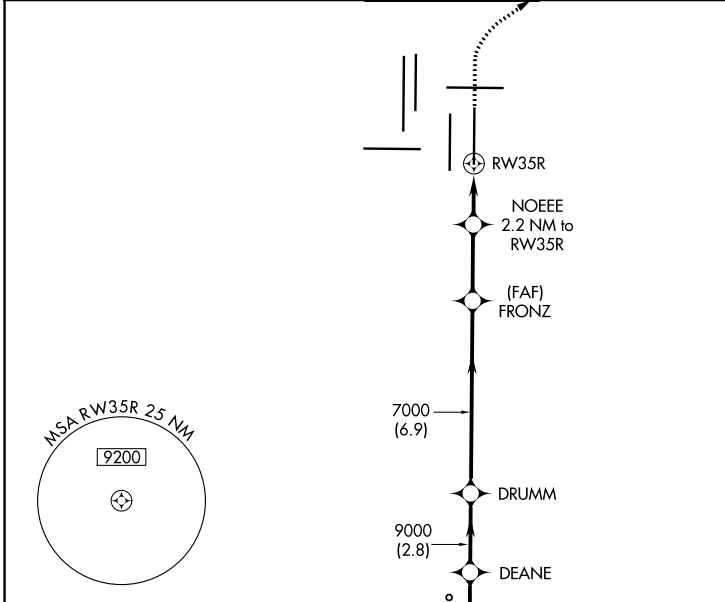
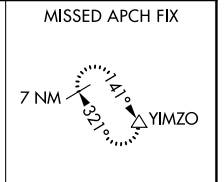
RNAV (GPS) Y RWY 35R

DENVER INTL (DEN)

⚠ For uncompensated Baro-VNAV systems, LNAV/VNAV NA below -25°C (-13°F) or above 45°C (114°F). DME/DME RNP-0.3 NA. For inoperative ALSF, increase LNAV/VNAV visibility all Cats to RVR 4000. LNAV procedure NA during simultaneous operations. Simultaneous approach authorized with Rwy 34L, Rwy 34R, and Rwy 35L. Use of FD or AP providing RNAV track guidance required during simultaneous operations.

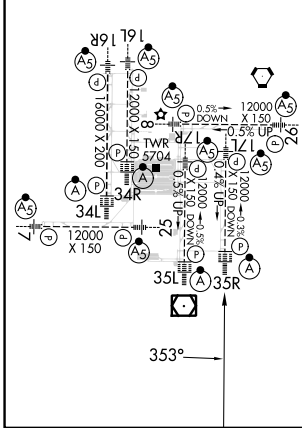
ALSF-2
 MISSED APPROACH: Climb to 5900 then climbing right turn to 8000 direct YIMZO and hold.

| | | | | | |
|--|---|---------------------------------------|---|---------------------------|-------|
| D-ATIS 125.6 379.9 (ARR) 134.025 (DEP) | DENVER APP CON 119.3 307.3 (N) 120.35 379.3 (S) | DENVER TOWER 132.35 239.275 | GND CON 121.35 379.175 (W) 121.85 377.1 (E) | CLNC DEL 118.75 | CPDLC |
|--|---|---------------------------------------|---|---------------------------|-------|



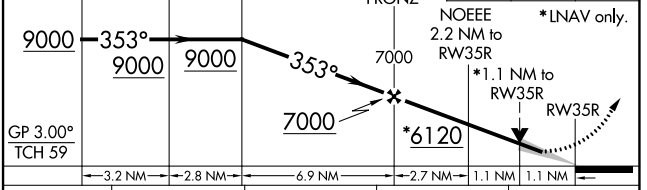
| | | |
|-----------|----------|-----------|
| ELEV 5434 | D | TDZE 5370 |
|-----------|----------|-----------|

HIRL all Rwys
 TDZ/CL Rwys 7, 16L, 16R, 17R,
 26, 34L, 34R, 35L, 35R



VGSI and RNAV glidepath not coincident (VGSI Angle 3.00/TCH 66).

| | | |
|------|------|-------|
| 5900 | 8000 | YIMZO |
| | | |



| CATEGORY | A | B | C | D |
|--------------|---------|---------------|---------------|--------------------------|
| LPV DA | DA | 5570/18 | 200 (200-1/2) | |
| LNAV/VNAV DA | DA | 5620/24 | 250 (200-1/2) | |
| LNAV MDA | 5800/24 | 430 (400-1/2) | | 5800/40 430 (400-3/4) |

SW-1, 28 NOV 2024 to 26 DEC 2024

SW-1, 28 NOV 2024 to 26 DEC 2024