

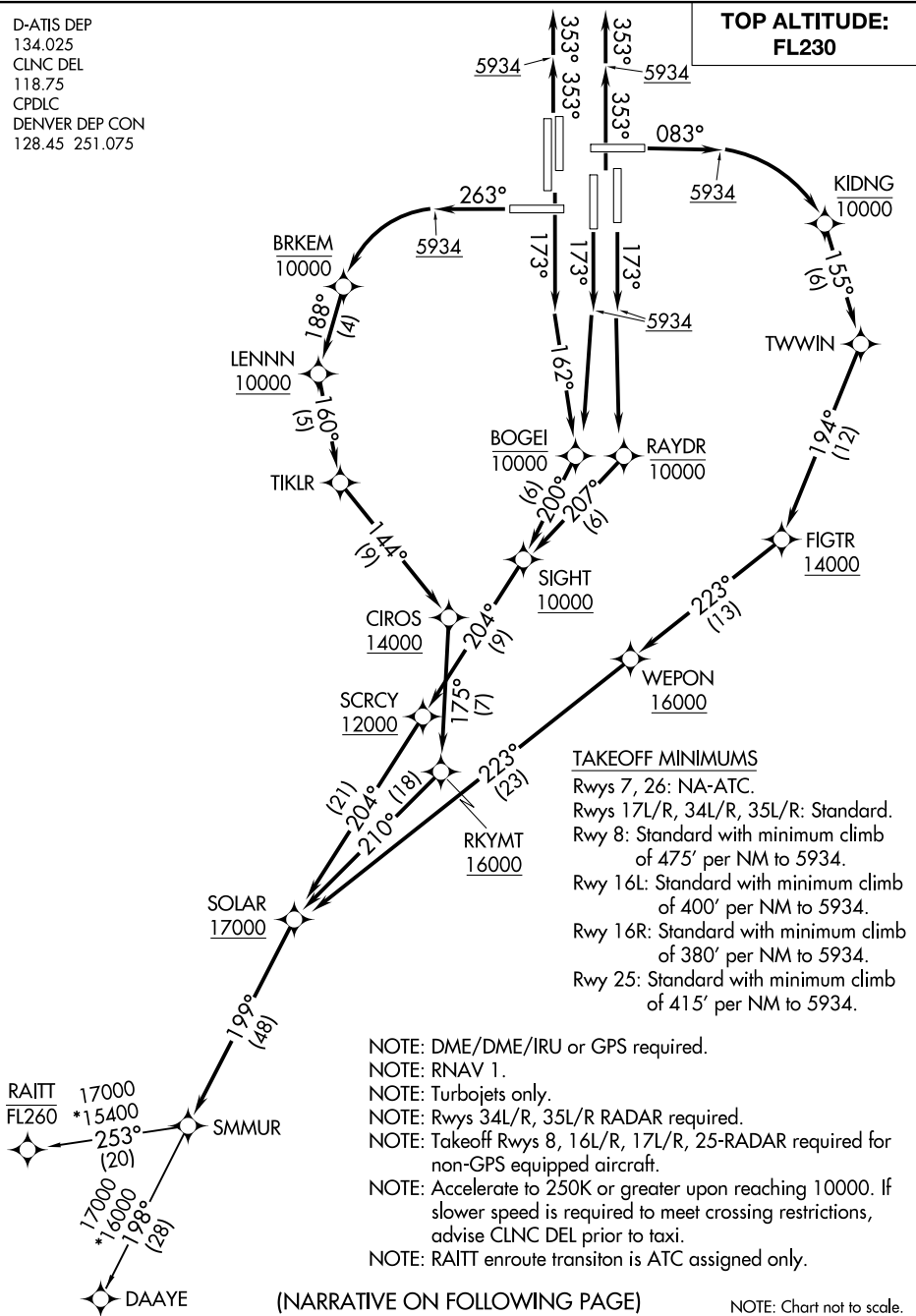
SMMUR TWO DEPARTURE (RNAV)

AL-9077 (FAA)

DENVER INTL (DEN)
DENVER, COLORADO

D-ATIS DEP
134.025
CLNC DEL
118.75
CPDLC
DENVER DEP CON
128.45 251.075

**TOP ALTITUDE:
FL230**



SW-1, 28 NOV 2024 to 26 DEC 2024

SW-1, 28 NOV 2024 to 26 DEC 2024

(NARRATIVE ON FOLLOWING PAGE)

NOTE: Chart not to scale.

SMMUR TWO DEPARTURE (RNAV)



DEPARTURE ROUTE DESCRIPTION
SEE ADDITIONAL REQUIREMENTS ON AAUP

TAKEOFF RUNWAY 8: Climb on heading 083° to 5934, then right turn direct KIDNG at or below 10000, then on track 155° to TWWIN, then on track 194° to cross FIGTR at or above 14000, then on track 223° to cross WEAPON at or above 16000, then on track 223° to cross SOLAR at or above 17000, thence

TAKEOFF RUNWAYS 16L/R: Climb on heading 173° to intercept course 162° to cross BOGEI at or below 10000, then on track 200° to cross SIGHT at or above 10000, then on track 204° to cross SCRCY at or above 12000, then on track 204° to cross SOLAR at or above 17000, thence

TAKEOFF RUNWAY 17L: Climb on heading 173° to 5934, then direct RAYDR at or below 10000, then on track 207° to cross SIGHT at or above 10000, then on track 204° to cross SCRCY at or above 12000, then on track 204° to cross SOLAR at or above 17000, thence

TAKEOFF RUNWAY 17R: Climb on heading 173° to 5934, then direct BOGEI at or below 10000, then on track 200° to cross SIGHT at or above 10000, then on track 204° to cross SCRCY at or above 12000, then on track 204° to cross SOLAR at or above 17000, thence

TAKEOFF RUNWAY 25: Climb on heading 263° to 5934, then left turn direct BRKEM at or below 10000, then on track 188° to cross LENNN at or above 10000, then on track 160° to TIKLR, then on track 144° to cross CIROS at or above 14000, then on track 175° to cross RKYMT at or above 16000, then on track 210° to cross SOLAR at or above 17000, thence

TAKEOFF RUNWAYS 34L/R, 35L/R: Climb on heading 353° to 5934, then on heading 353° or as assigned by ATC, expect vectors to cross SOLAR at or above 17000, thence

. . . . on track 199° to SMMUR. Then on (transition), maintain FL230 or filed lower altitude. Expect higher filed altitude ten minutes after departure.

DAAYE TRANSITION (SMMUR2.DAAYE)

RAITT TRANSITION (SMMUR2.RAITT)

SW-1, 28 NOV 2024 to 26 DEC 2024

SW-1, 28 NOV 2024 to 26 DEC 2024