

|  |                        |   |
|--|------------------------|---|
| WAAS<br>CH <b>97339</b><br><b>W22A</b> | APP CRS<br><b>225°</b> | Rwy Idg <b>5002</b><br>TDZE <b>107</b><br>Apt Elev <b>112</b> |
|--|------------------------|---|

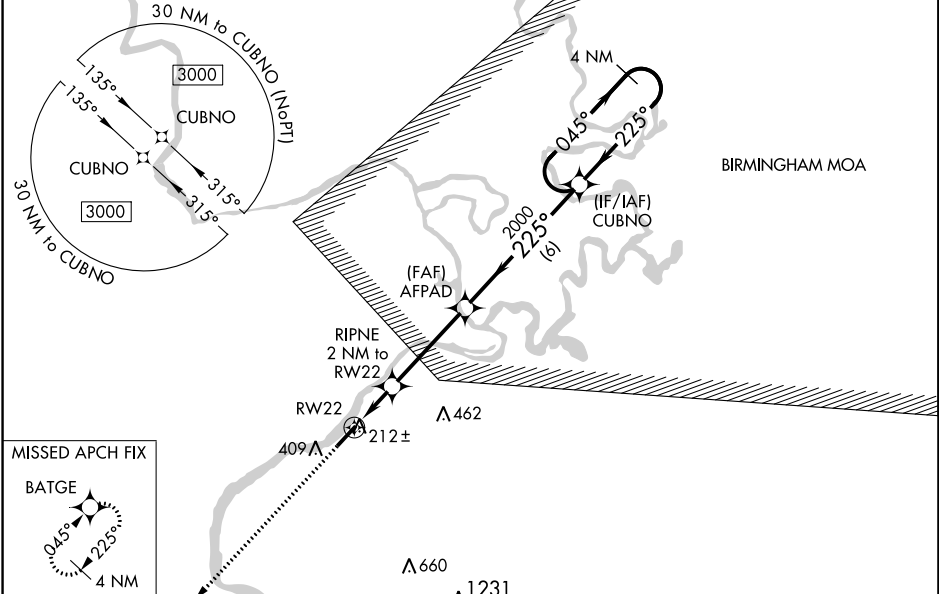
# RNAV (GPS) RWY 22

DEMOPOLIS RGNL (DYA)

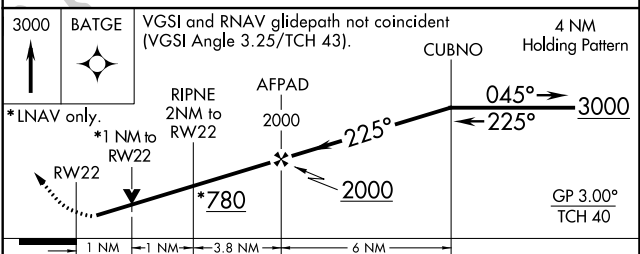
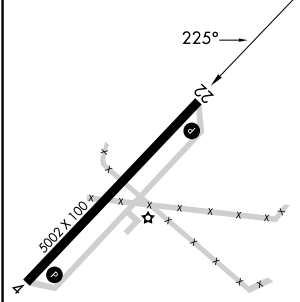
▼ For uncompensated Baro-VNAV systems, LNAV/VNAV NA below -15°C (5°F) or above 54°C (130°F). DME/DME RNP-0.3 NA. When local altimeter setting not received, use Marion altimeter setting and increase LPV and LNAV/VNAV DA 82 feet and all MDA 100 feet; increase LPV all Cats visibility ¼ mile, increase LNAV/VNAV all Cats and LNAV Cats C/D visibility ⅓ mile, increase Circling Cat C visibility ¼ mile, and Circling Cat D visibility ½ mile. Baro-VNAV and VDP NA when using Marion altimeter setting. Helicopter visibility reduction below ⅓ SM NA.

MISSED APPROACH:  
Climb to 3000 direct  
BATGE and hold.

|                           |   |                                 |
|---------------------------|---|---------------------------------|
| AWOS-3P<br><b>119.475</b> | MERIDIAN APP CON*<br><b>121.275 348.7</b> | UNICOM<br><b>122.8 (CTAF) 0</b> |
|---------------------------|---|---------------------------------|



|          |          |
|----------|----------|
| ELEV 112 | TDZE 107 |
|----------|----------|



| CATEGORY          | A     | B           | C                            | D                    |
|-------------------|-------|-------------|------------------------------|----------------------|
| LPV DA            |       | 369-7/8     | 262 (300-7/8)                |                      |
| LNAV/VNAV DA      |       | 385-7/8     | 278 (300-7/8)                |                      |
| LNAV MDA          |       | 480-1       | 373 (400-1)                  |                      |
| <b>C</b> CIRCLING | 720-1 | 608 (700-1) | 720-1 3/4<br>608 (700-1 3/4) | 780-2<br>668 (700-2) |

SE-4, 28 NOV 2024 TO 26 DEC 2024

SE-4, 28 NOV 2024 TO 26 DEC 2024