

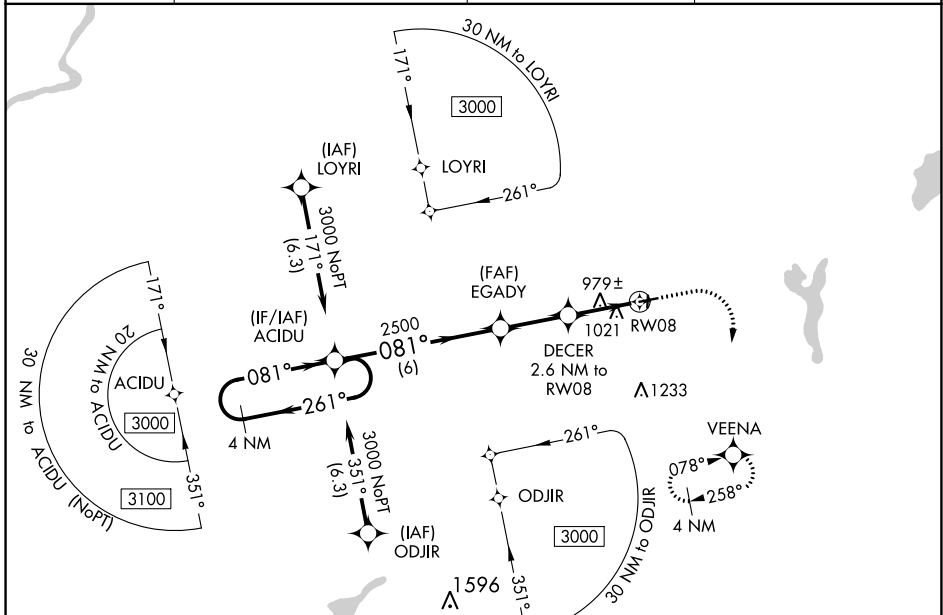
WAAS CH <b>78423</b> <b>W08A</b>	APP CRS <b>081°</b>	Rwy Idg TDZE Apt Elev	<b>3900</b> <b>851</b> <b>860</b>
--	------------------------	-----------------------------	---

# RNAV (GPS) RWY 8

EAST TROY MUNI (57C)

RNP APCH. ▼ Obtain local altimeter setting on CTAF; when not received use General Mitchell Intl altimeter setting and increase all MDA 80 feet. Rwy 8 helicopter visibility reduction below 3/4 SM NA. VDP NA when using General Mitchell Intl altimeter setting.	MISSED APPROACH: Climb to 2400 then climbing right turn to 3000 direct VEENA and hold.
--	--

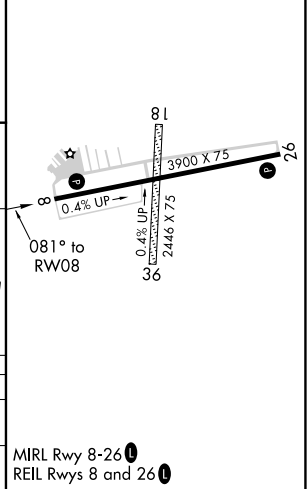
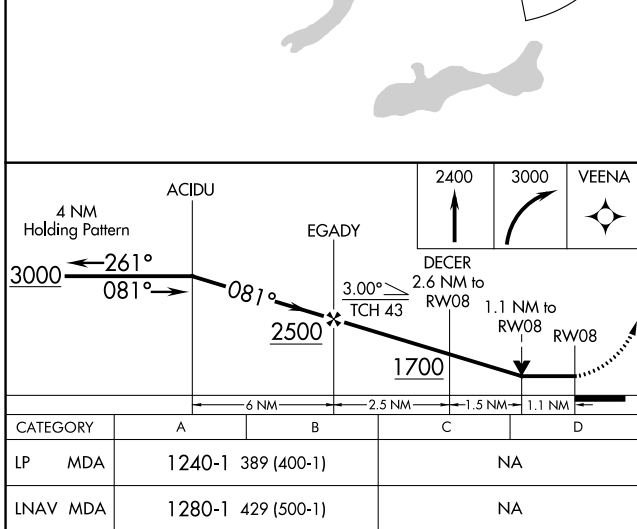
AWOS-3PT <b>118.125</b>	MILWAUKEE APP CON <b>125.35 307.0</b>	GCO <b>121.725</b>	UNICOM <b>123.0 (CTAF)</b> <b>📻</b>
----------------------------	--	-----------------------	--



EC-3, 28 NOV 2024 to 26 DEC 2024

EC-3, 28 NOV 2024 to 26 DEC 2024

ELEV 860	TDZE 851
----------	----------



CATEGORY	A	B	C	D
LP MDA	1240-1	389 (400-1)		NA
LNAV MDA	1280-1	429 (500-1)		NA

MIRL Rwy 8-26 **📻**  
REIL Rws 8 and 26 **📻**