

| | | |
|---|------------------------|---|
| VORTAC TYI 117.8 Chan 125 | APP CRS 291° | Rwy Idg 3999 TDZE 50 Apt Elev 53 |
|---|------------------------|---|

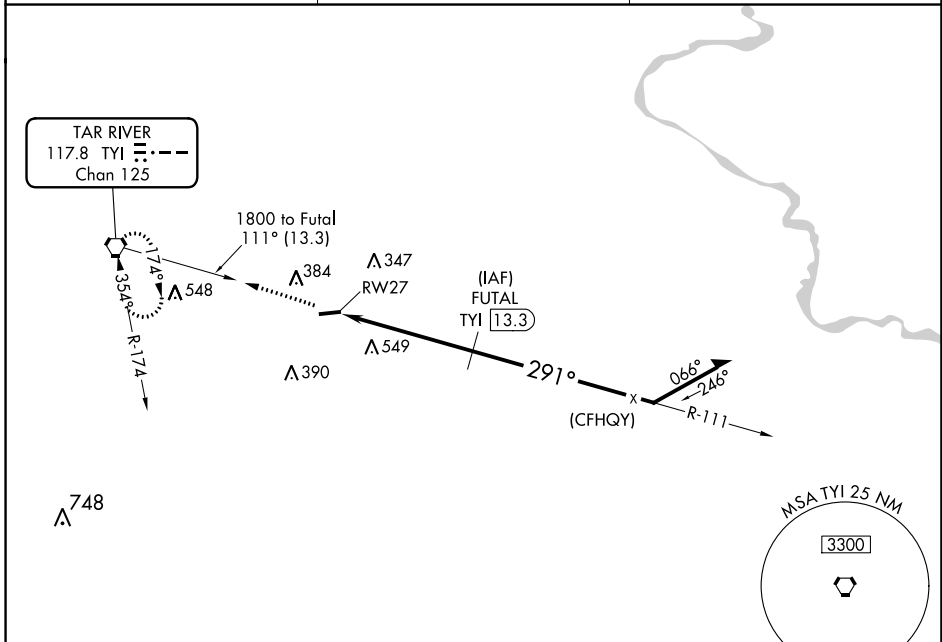
VOR/DME or GPS RWY 27

TARBORO-EDGEcombe (E/T/C)

▼ Use Rocky Mount altimeter setting; when not received
▲ NA use Raleigh-Durham altimeter setting minimums.

MISSED APPROACH: Climb to 2000 direct TYI VORTAC and hold.

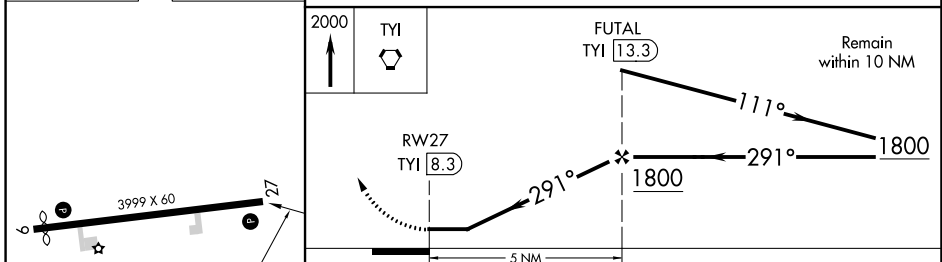
| | | |
|---------------------------|---|------------------------|
| AWOS-3P 119.575 | WASHINGTON CENTER 123.85 279.65 | CTAF 122.9 0 |
|---------------------------|---|------------------------|



SE-2, 28 NOV 2024 to 26 DEC 2024

SE-2, 28 NOV 2024 to 26 DEC 2024

| | |
|---------|---------|
| ELEV 53 | TDZE 50 |
|---------|---------|



| CATEGORY | A | B | C | D |
|---|---------------------------|---------------------------|------------------------|-------------------------|
| S-27 | 860-1 810 (900-1) | 860-1¼ 810 (900-1¼) | 860-2¼ 810 (900-2¼) | 860-2½ 810 (900-2½) |
| CIRCLING | 860-1 807 (900-1) | 860-1¼ 807 (900-1¼) | 860-2¼ 807 (900-2¼) | 920-2¾ 867 (900-2¾) |
| RALEIGH-DURHAM ALTIMETER SETTING MINIMUMS | | | | |
| S-27 | 1080-1¼ 1030 (1100-1¼) | 1080-1½ 1030 (1100-1½) | 1080-3 | 1030 (1100-3) |
| CIRCLING | 1080-1¼ 1027 (1100-1¼) | 1080-1½ 1027 (1100-1½) | 1080-3 | 1140-3 1087 (1100-3) |

REIL Rwy 27 0
MIRL Rwy 9-27 0