

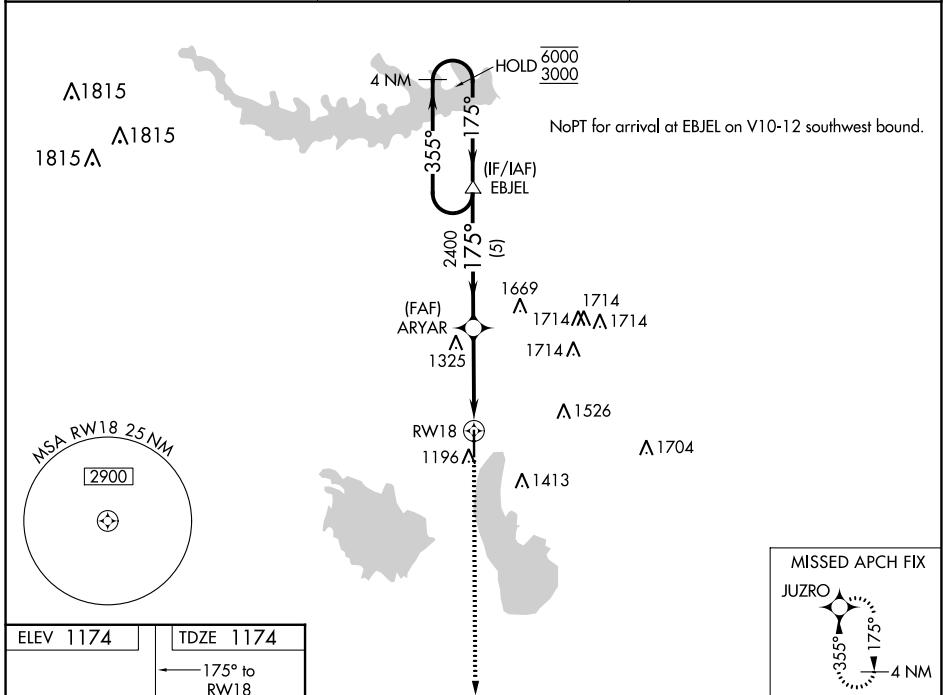
WAAS CH <b>66021</b> <b>W18A</b>	APP CRS <b>175°</b>	Rwy Idg <b>5500</b> TDZE <b>1174</b> Apt Elev <b>1174</b>
--	------------------------	---

# RNAV (GPS) RWY 18

COFFEY COUNTY (UKL)

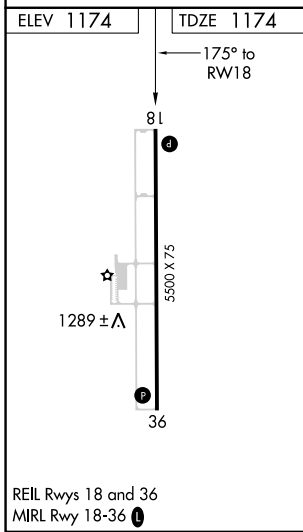
RNP APCH-GPS.	MISSED APPROACH: Climb to 3000 direct JUZRO and hold.
For uncompensated Baro-VNAV systems, LNAV/VNAV NA below -17°C or above 54°C.	

AWOS-3PT <b>121.125</b>	KANSAS CITY CENTER <b>127.725 270.25</b>	UNICOM <b>123.0 (CTAF) 0</b>
----------------------------	---	---------------------------------



NC-2, 28 NOV 2024 to 26 DEC 2024

NC-2, 28 NOV 2024 to 26 DEC 2024



ELEV 1174	TDZE 1174																												
4 NM Holding Pattern 6000 ← 355° 3000 → 175°	EBJEL	ARYAR	2400	1.2 NM to RWY 18	3000 ↑ JUZRO 																								
GP 3.00° TCH 40	5 NM	2.5 NM	1.2 NM																										
<table border="1"> <thead> <tr> <th>CATEGORY</th> <th>A</th> <th>B</th> <th>C</th> <th>D</th> </tr> </thead> <tbody> <tr> <td>LPV DA</td> <td>1424-1</td> <td>250 (300-1)</td> <td></td> <td>NA</td> </tr> <tr> <td>LNAV/VNAV DA</td> <td>1424-1</td> <td>250 (300-1)</td> <td></td> <td>NA</td> </tr> <tr> <td>LNAV MDA</td> <td>1580-1</td> <td>406 (500-1)</td> <td>1580-1 1/8 406 (500-1 1/8)</td> <td>NA</td> </tr> <tr> <td><b>C</b> CIRCLING</td> <td>1580-1 406 (500-1)</td> <td>1640-1 466 (500-1)</td> <td>1920-2 1/4 746 (800-2 1/4)</td> <td>NA</td> </tr> </tbody> </table>	CATEGORY	A	B	C	D	LPV DA	1424-1	250 (300-1)		NA	LNAV/VNAV DA	1424-1	250 (300-1)		NA	LNAV MDA	1580-1	406 (500-1)	1580-1 1/8 406 (500-1 1/8)	NA	<b>C</b> CIRCLING	1580-1 406 (500-1)	1640-1 466 (500-1)	1920-2 1/4 746 (800-2 1/4)	NA				
CATEGORY	A	B	C	D																									
LPV DA	1424-1	250 (300-1)		NA																									
LNAV/VNAV DA	1424-1	250 (300-1)		NA																									
LNAV MDA	1580-1	406 (500-1)	1580-1 1/8 406 (500-1 1/8)	NA																									
<b>C</b> CIRCLING	1580-1 406 (500-1)	1640-1 466 (500-1)	1920-2 1/4 746 (800-2 1/4)	NA																									