

LOC I-PBV 110.1	APP CRS 111°	Rwy Idg 4982
		TDZE 128
		Apt Elev 128

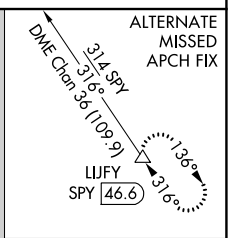
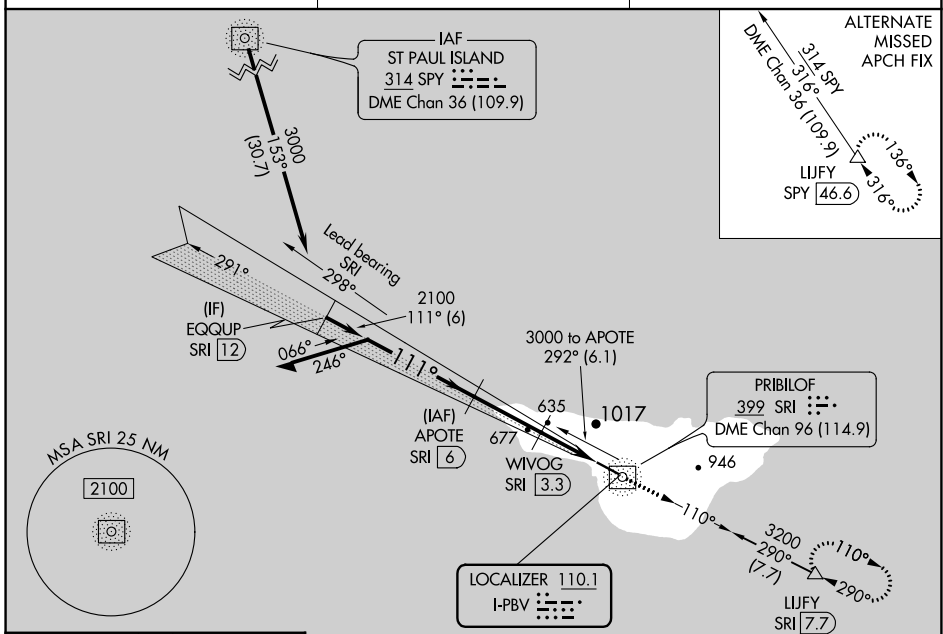
ILS or LOC RWY 11

ST GEORGE (PBV) (PAPB)

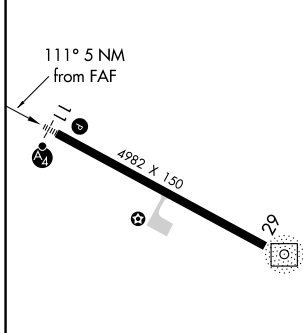
⚠ DME from SRI NDB/DME. Simultaneous reception of I-PBV and SRI DME required. Circling NA north of Rwy 11-29. ADF and DME required. Inop table does not apply to S-LOC 11 Cats A and B and S-ILS 11 all Cats.

MALSF MISSED APPROACH: Climb to 3200 on SRI NDB/DME bearing 110° to LIJFY/SRI 7.7 DME and hold, continue climb-in-hold to 3200.

ASOS 135.45	ANCHORAGE CENTER 119.1 339.8	CTAF 122.8
-----------------------	--	----------------------



ELEV 128	TDZE 128
----------	----------

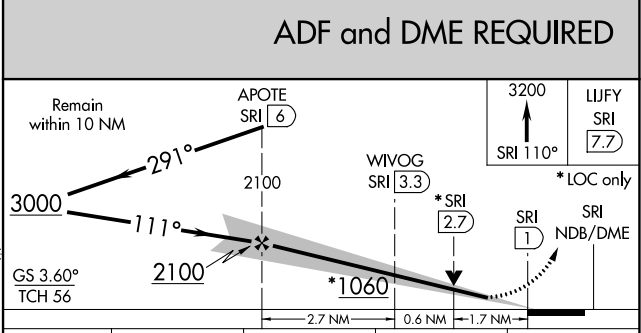


REIL Rwy 29

HIRL Rwy 11-29

FAF to MAP 5 NM

Knots	60	90	120	150	180
Min:Sec	5:00	3:20	2:30	2:00	1:40



CATEGORY	A	B	C	D
S-ILS 11	428-1 300 (300-1)			NA
S-LOC 11	840-1	712 (800-1)	840-1¾ 712 (800-1¾)	NA
<input checked="" type="checkbox"/> CIRCLING	840-1 712 (800-1)	980-1¼ 852 (900-1¼)	980-2½ 852 (900-2½)	NA

AK, 31 OCT 2024 to 26 DEC 2024

AK, 31 OCT 2024 to 26 DEC 2024