

APP CRS	Rwy Idg	3181
109°	TDZE	998
	Apt Elev	1003

RNAV (GPS) RWY 12

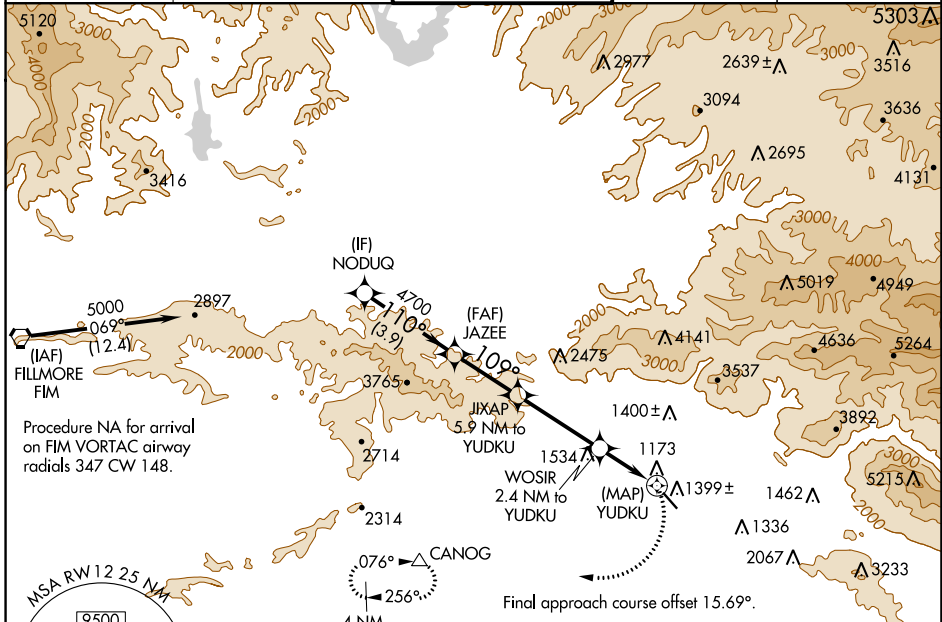
WHITEMAN (WHP)

RNP APCH.

NA Procedure NA at night. When local altimeter setting not received, use Burbank altimeter setting. Rwy 12 helicopter visibility reduction below 1 SM NA.

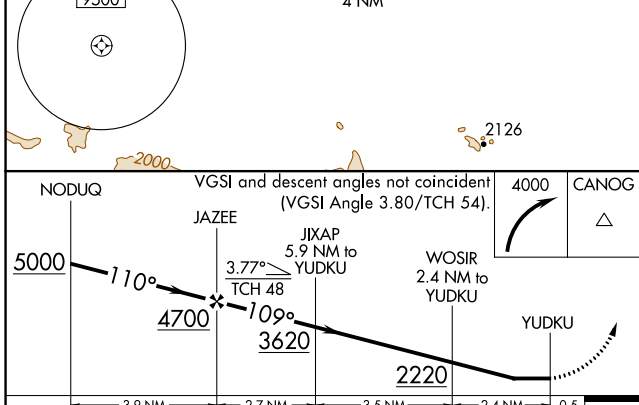
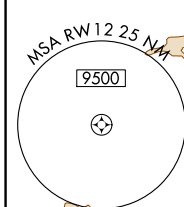
MISSED APPROACH: Climbing right turn to 4000 direct CANOG and hold.

ATIS 132.1	SOCAL APP CON 120.4 360.6 (NORTH) 134.2 338.2 (WEST)	WHITEMAN TOWER ★ 135.0 (CTAF)	GND CON 125.0	UNICOM 122.95
----------------------	--	---	-------------------------	-------------------------

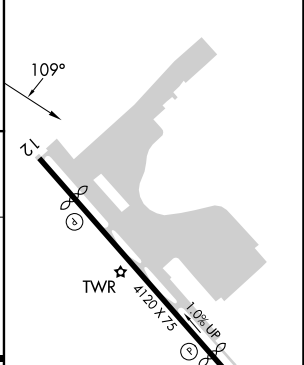


(IAF) FILLMORE FIM
5000 (12.4)
2897
3765
2714
2314
2126

Procedure NA for arrival on FIM VORTAC airway radials 347 CW 148.



ELEV 1003	D TDZE 998
-----------	-------------------



CATEGORY	A	B	C	D
LNVA MDA	1660-1	662 (700-1)	1660-1 7/8 662 (700-1 7/8)	NA
C CIRCLING	1700-1 697 (700-1)	1860-1 1/4 857 (900-1 1/4)	2200-3 1197 (1200-3)	NA

REIL Rwy 12 and 30
MIRL Rwy 12-30

SW-3, 28 NOV 2024 to 26 DEC 2024

SW-3, 28 NOV 2024 to 26 DEC 2024