

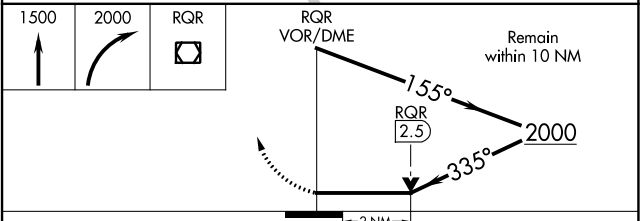
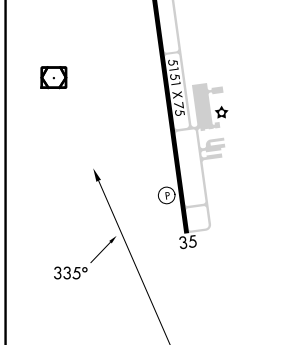
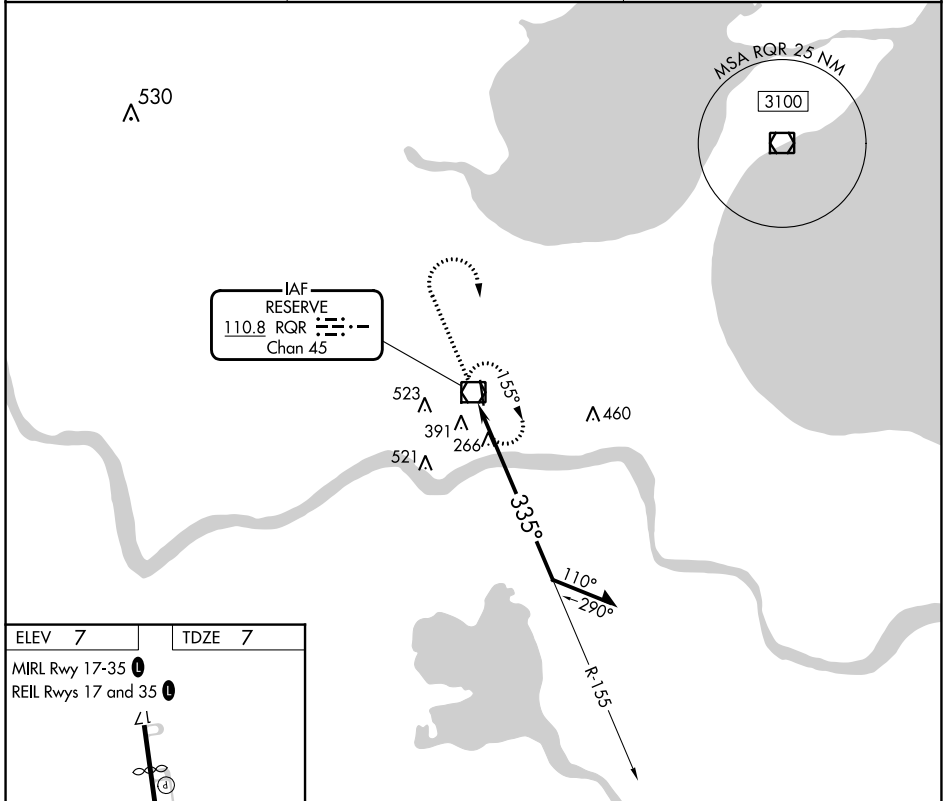
VOR/DME RQR 110.8 Chan 45	APP CRS 335°	Rwy Idg 5151 TDZE 7 Apt Elev 7
---	------------------------	---

VOR RWY 35

PORT OF SOUTH LOUISIANA EXEC RGNL (APS)

<p>⚠ Rwy 35 helicopter visibility reduction below 3/4 SM NA.</p>	<p>MISSED APPROACH: Climb to 1500 then climbing right turn to 2000 direct RQR VOR/DME and hold.</p>
---	---

AWOS-3PT 125.45	NEW ORLEANS APP CON 125.5 350,35	UNICOM 122.7 (CTAF) 0
---------------------------	--	---------------------------------



CATEGORY	A	B	C	D
S-35	700-1	693 (700-1)	700-2 693 (700-2)	NA
C CIRCLING	700-1	693 (700-1)	840-2 1/2 833 (900-2 1/2)	NA

VOR RWY 35

SC-4, 28 NOV 2024 to 26 DEC 2024

SC-4, 28 NOV 2024 to 26 DEC 2024