

WAAS CH <b>72714</b> <b>W24A</b>	APP CRS <b>238°</b>	Rwy ldg <b>4500</b> TDZE <b>928</b> Apt Elev <b>933</b>
--	------------------------	---

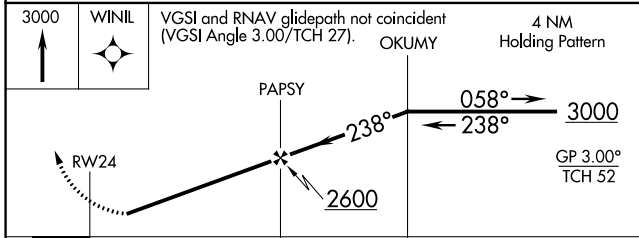
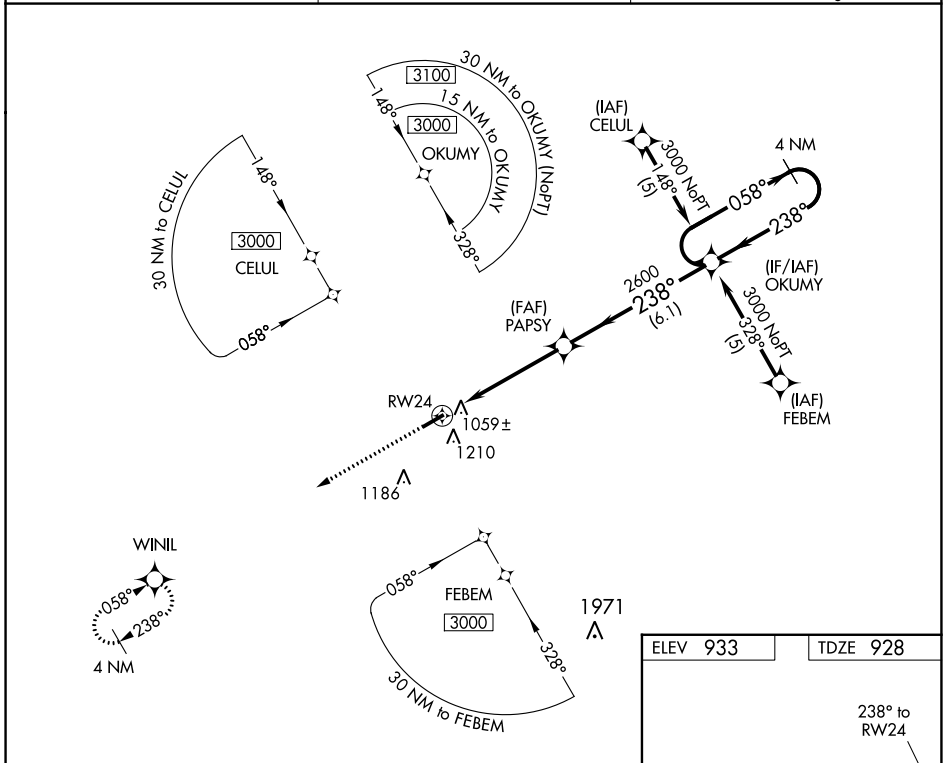
# RNAV (GPS) RWY 24

SULLIVAN RGNL (UUUV)

▼ Straight-in minimums NA at night. Circling to Rwy 24 NA at night. Baro-VNAV NA when using Rolla Nil altimeter setting. For uncompensated Baro-VNAV systems, LNAV/VNAV NA below -16°C (4°F) or above 54°C (130°F). DME/DME RNP-0.3 NA. Visibility reduction by helicopters NA. ▲ NA When local altimeter setting not received, use Rolla Nil altimeter setting and increase all DA 98 feet and all MDA 100 feet, increase LPV and LNAV/VNAV Cat A and B visibility ¼ mile.

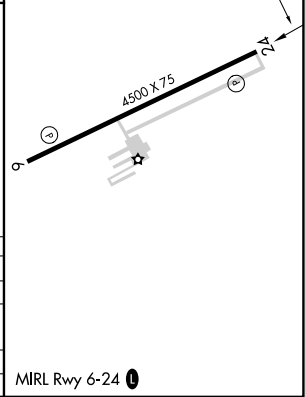
MISSED APPROACH: Climb to 3000 direct WINIL and hold.

AWOS-3PT <b>119.375</b>	KANSAS CITY CENTER <b>128.35 284.675</b>	UNICOM <b>122.7 (CTAF) 0</b>
----------------------------	---	---------------------------------



ELEV 933	TDZE 928
----------	----------

CATEGORY	A	B	C	D
LPV DA	1178-1	250 (300-1)		NA
LNAV/VNAV DA	1392-1¾	464 (500-1¾)		NA
LNAV MDA	1460-1	532 (600-1)		NA
CIRCLING	1520-1	587 (600-1)		NA



NC-3, 28 NOV 2024 to 26 DEC 2024

NC-3, 28 NOV 2024 to 26 DEC 2024