

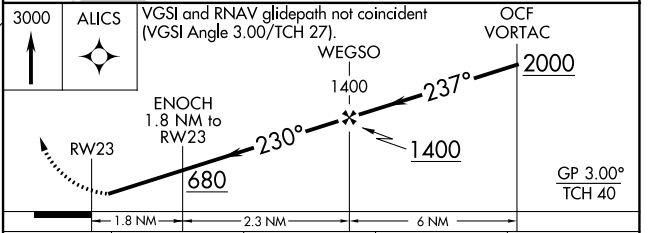
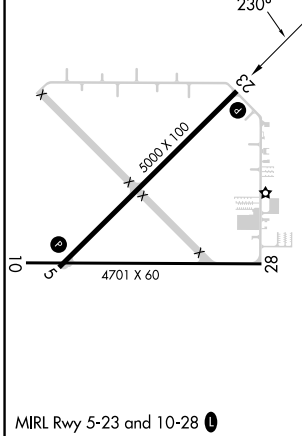
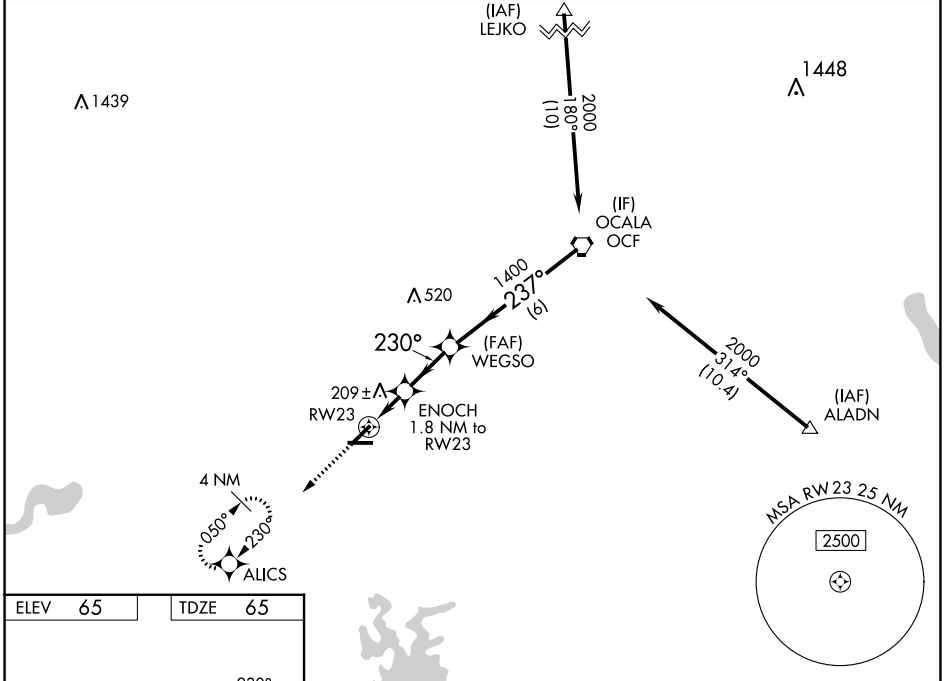
WAAS CH <b>48828</b> <b>W23A</b>	APP CRS <b>230°</b>	Rwy Idg <b>5000</b> TDZE <b>65</b> Apt Elev <b>65</b>
--	------------------------	---

# RNAV (GPS) RWY 23

MARION COUNTY (X35)

RNP APCH - GPS. ▼ ▲ NA Rwy 23 helicopter visibility reduction below 3/4 SM NA. Baro-VNAV NA. Use Ocala altimeter setting; when not received, use Leesburg altimeter setting and increase LPV DA to 424 feet; increase LNAV/VNAV DA to 579 feet; increase all MDAs 60 feet and LNAV visibility Cat C/D 1/8 SM, and Circling visibility Cat D 1/4 SM. Circling Rwy 5, 10, 28 NA at night.	MISSED APPROACH: Climb to 3000 direct ALICS and hold, continue climb-in-hold to 3000.
--	---

OCF AWOS-3PT <b>128.125</b>	JACKSONVILLE APP CON <b>118.6 251.15</b>	UNICOM <b>122.8 (CTAF) 0</b>
--------------------------------	---	---------------------------------



CATEGORY	A	B	C	D
LPV DA		374-1	309 (400-1)	
LNAV/VNAV DA		529-1 3/8	464 (500-1 3/8)	
LNAV MDA	540-1	475 (500-1)	540-1 3/8	475 (500-1 3/8)
CIRCLING	540-1	475 (500-1)	580-1 1/2 515 (600-1 1/2)	760-2 1/4 695 (700-2 1/4)

SE-3, 28 NOV 2024 to 26 DEC 2024

SE-3, 28 NOV 2024 to 26 DEC 2024