

WAAS CH <b>65902</b> <b>W30A</b>	APP CRS <b>300°</b>	Rwy Idg TDZE Apt Elev	<b>4500</b> <b>55</b> <b>79</b>
--	------------------------	-----------------------------	---------------------------------------

# RNAV (GPS) RWY 30

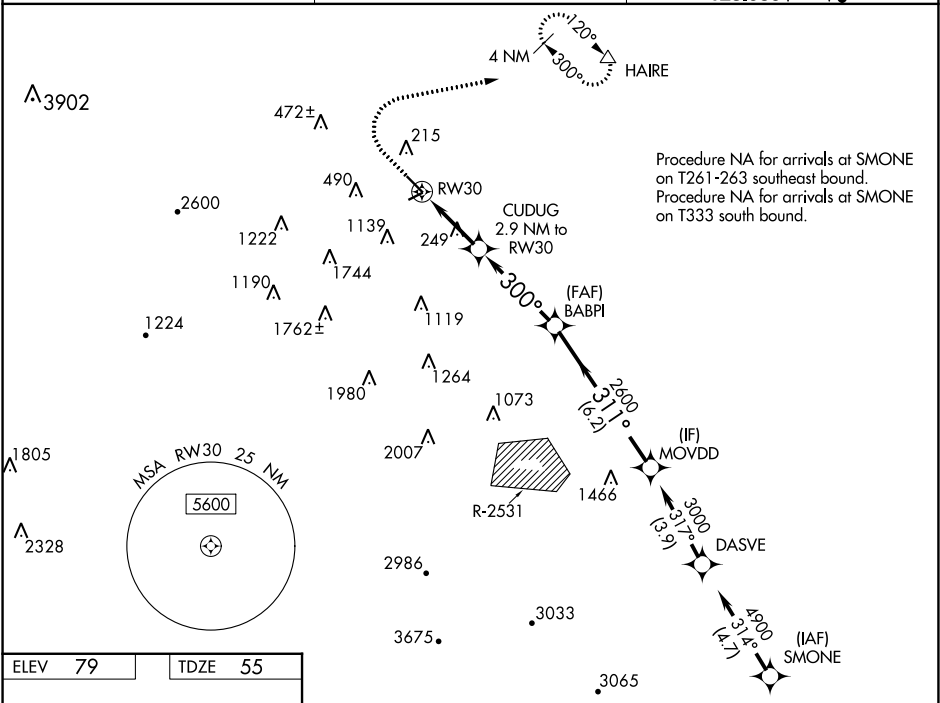
BYRON (C83)

RNP APCH.

For uncompensated Baro-VNAV systems, LNAV/VNAV NA below -15°C (5°F) or above 15°C (59°F). Circling NA southwest of Rwy 12-30.

MISSED APPROACH: Climb to 1000, then climbing right turn 4000 direct HAIRE and hold, continue climb-in-hold 4000.

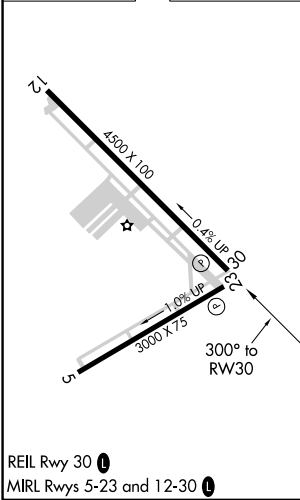
AWOS-3 <b>123.775</b>	NORCAL APP CON <b>123.85 278.3</b>	UNICOM <b>123.050 (CTAF)</b>
--------------------------	---------------------------------------	---------------------------------



SW-2, 28 NOV 2024 to 26 DEC 2024

SW-2, 28 NOV 2024 to 26 DEC 2024

ELEV 79	TDZE 55
---------	---------



1000	4000	HAIRE	VGSi and RNAV glidepath not coincident (VGSi Angle 3.50/ TCH 25).			
*LNAV only			BABPI 2600	MOVDD 3000		
			CUDUG 2.9 NM to RW30			
			*1.1 NM to RW30			
			1140*	2600	311°	GP 3.50° TCH 31
			1.1 NM	1.8 NM	3.9 NM	6.2 NM
CATEGORY	A	B	C	D		
LPV DA	325-7/8		270 (300-7/8)			
LNAV/VNAV DA	404-1 1/8		349 (400-1 1/8)			
LNAV MDA	500-1	445 (500-1)	500-1 3/8	445 (500-1 3/8)		
CIRCLING	600-1	521 (600-1)	680-1 3/4	820-2 1/2		
			601 (700-1 3/4)	741 (800-2 1/2)		

# RNAV (GPS) RWY 30