

APP CRS	Rwy Idg	4000
173°	TDZE	915
	Apt Elev	915

RNAV (GPS) RWY 17

LAWRENCE SMITH MEML (L.R.Y)

RNP APCH.

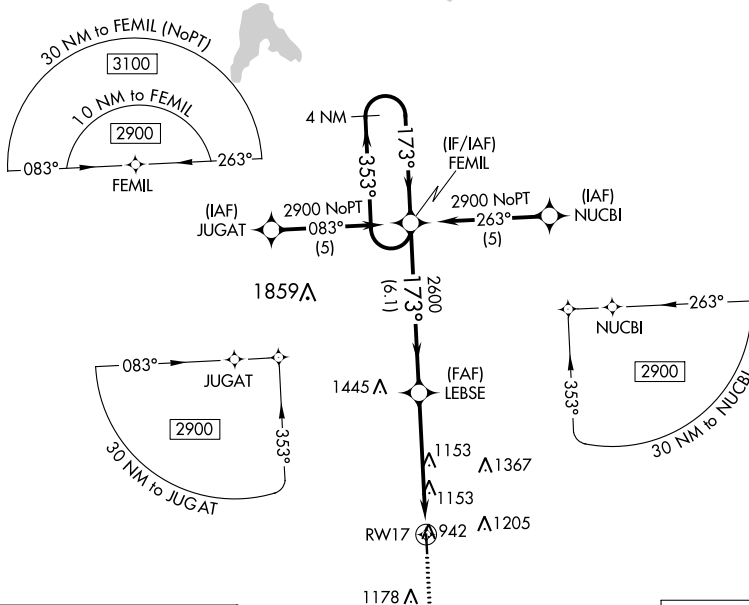
⚠ When local altimeter setting not received, use Charles B Wheeler Downtown altimeter setting: increase all MDAs 100 feet and visibility Cat C ¼ mile. Procedure NA at night. Rwy 17 helicopter visibility reduction below 1 SM NA.

MISSED APPROACH: Climb to 2600 direct HOWIF and hold.

AWOS-3PT
119.975

KANSAS CITY CENTER
125.55 327.0

UNICOM
123.0 (CTAF) 0



NC-3, 28 NOV 2024 to 26 DEC 2024

NC-3, 28 NOV 2024 to 26 DEC 2024

