

WAAS CH 93723 W01A	APP CRS 008°	Rwy Idg TDZE 436 Apt Elev 436	5000
--	------------------------	---	-------------

RNAV (GPS) RWY 1

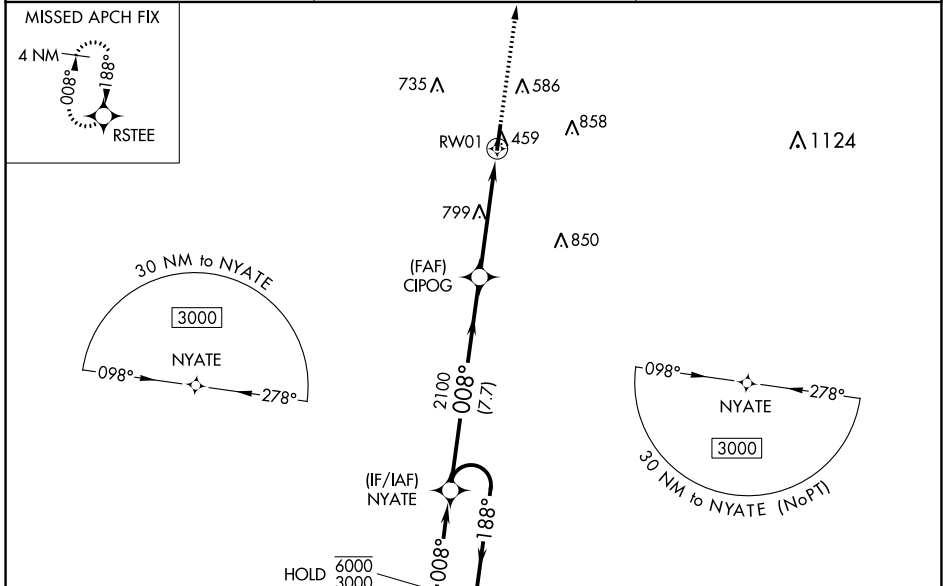
FAYETTE COUNTY (FYE)

RNP APCH - GPS.

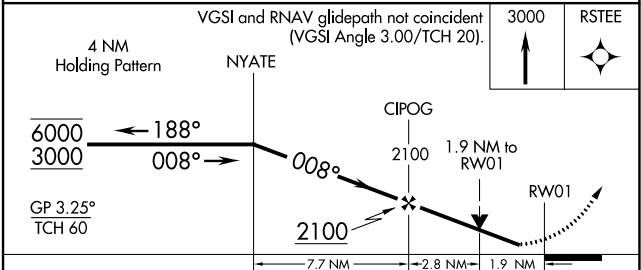
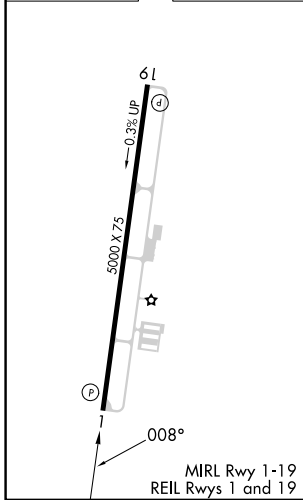
Baro-VNAV and VDP NA when using Memphis Intl altimeter setting. Rwy 1 helicopter visibility reduction below $\frac{3}{4}$ SM NA. For uncompensated Baro-VNAV systems, LNAV/VNAV NA below -15°C or above 54°C . When local altimeter setting not received, use Memphis Intl altimeter setting: increase LPV DA to 843 feet and all visibilities $\frac{1}{8}$ SM; increase LNAV/VNAV DA to 905 feet and all visibilities $\frac{1}{4}$ SM; increase all MDA 100 feet and visibility LNAV Cat C $\frac{1}{4}$ SM and Circling Cat C $\frac{1}{2}$ SM.

MISSED APPROACH: Climb to 3000 direct RSTEE and hold.

AWOS-3 119.875	MEMPHIS APP CON 125.8 338.3	CTAF 122.9
--------------------------	---------------------------------------	----------------------



ELEV 436	TDZE 436
-----------------	-----------------



CATEGORY	A	B	C	D
LPV DA	747-1	311 (400-1)		NA
LNAV/VNAV DA	809-1 $\frac{1}{8}$	373 (400-1 $\frac{1}{8}$)		NA
LNAV MDA	1060-1	624 (700-1)	1060-1 $\frac{3}{4}$ 624 (700-1 $\frac{1}{4}$)	NA
CIRCLING	1060-1	624 (700-1)	1160-2 724 (800-2)	NA

SE-1, 28 NOV 2024 to 26 DEC 2024

SE-1, 28 NOV 2024 to 26 DEC 2024