

LOC/DME I-GHO <b>110.75</b> Chan 44 (Y)	APP CRS <b>092°</b>	Rwy Idg <b>4300</b> TDZE <b>22</b> Apt Elev <b>22</b>
---	------------------------	---

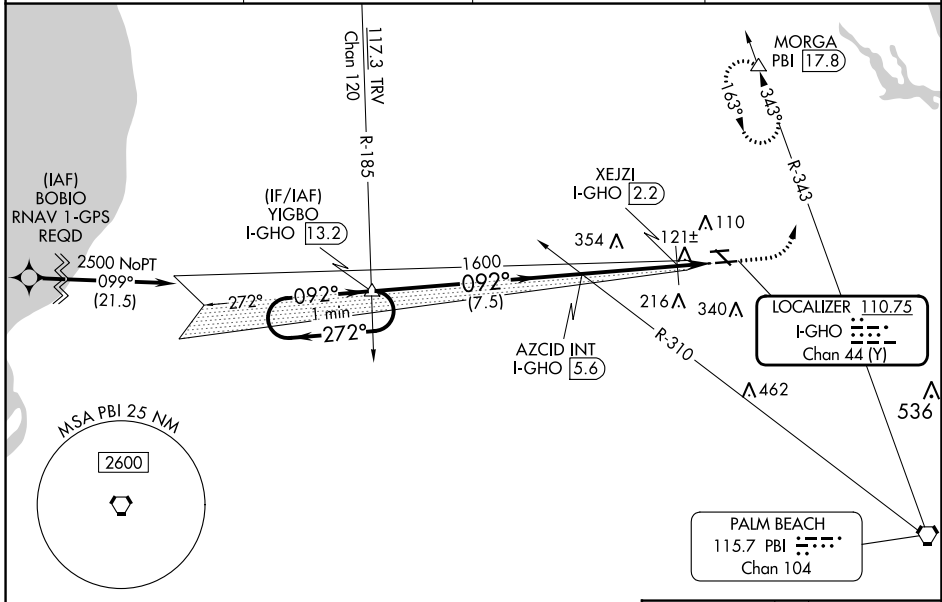
# ILS or LOC RWY 9R

NORTH PALM BEACH COUNTY GENERAL AVIATION (F45)

**⚠ NA** Circling NA to Rwys 9L and 27R. DME required. When local altimeter setting not received, use Palm Beach Intl altimeter setting and increase all DA to 300 and all visibilities 1/8 SM; increase all MDAs 40 feet; increase XEJZI Fix Minimums S-LOC 9R Cats C/D visibility 1/8 SM. Rwy 9R helicopter visibility reduction below 3/4 SM NA.

MISSED APPROACH: Climb to 500 then climbing left turn to 2000 on hdg 033° and on PBI VORTAC R-343 to MORGA PBI 17.8 DME and hold.

AWOS-3 <b>119.975</b>	PALM BEACH APP CON <b>128.3 317.4</b>	CLNC DEL <b>120.825</b>	UNICOM <b>123.075 (CTAF)</b>
--------------------------	--	----------------------------	---------------------------------



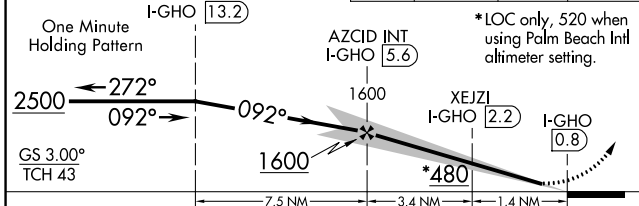
SE-3, 28 NOV 2024 to 26 DEC 2024

SE-3, 28 NOV 2024 to 26 DEC 2024

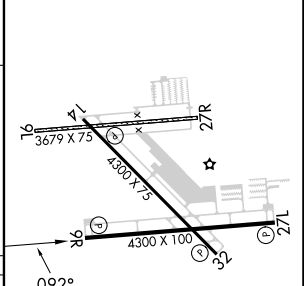
VGSI and ILS glidepath not coincident (VGSI Angle 3.00/TCH 40).

500	2000	PBI R-343	MORGA
-----	------	-----------	-------

↑ hdg 033°



ELEV 22	TDZE 22
---------	---------



CATEGORY	A	B	C	D
S-ILS 9R		272-3/4	250 (300-3/4)	
S-LOC 9R	480-1	458 (500-1)	480-1 3/8	458 (500-1 1/8)
<b>C</b> CIRCLING	480-1	458 (500-1)	700-2 678 (700-2)	720-2 1/4 698 (700-2 1/4)
XEJZI FIX MINIMUMS				
S-LOC 9R	420-1	398 (400-1)	420-1 1/8	398 (400-1 1/8)
<b>C</b> CIRCLING	460-1 438 (500-1)	480-1 458 (500-1)	700-2 678 (700-2)	720-2 1/4 698 (700-2 1/4)

MIRL Rwys 9R-27L and 14-32  
REIL Rwys 9R, 14, 27L and 32

FAF to MAP 4.8 NM

Knots	60	90	120	150	180
Min:Sec	4:48	3:12	2:24	1:55	1:36