

WAAS CH <b>40310</b> <b>W14A</b>	APP CRS <b>142°</b>	Rwy Idg <b>4300</b> TDZE <b>21</b> Apt Elev <b>22</b>
--	------------------------	---

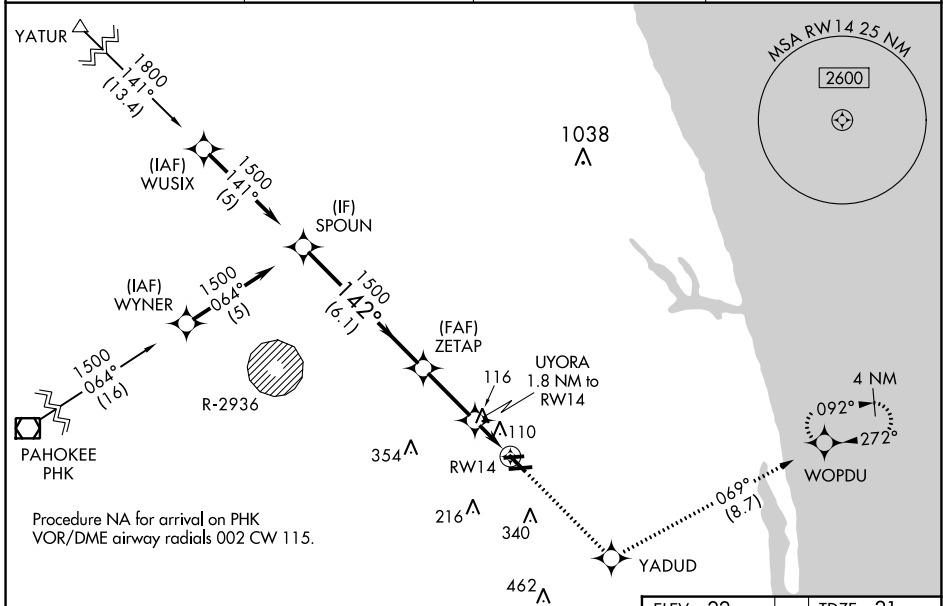
# RNAV (GPS) RWY 14

NORTH PALM BEACH COUNTY GENERAL AVIATION (F45)

**⚠** Circling NA to Rwys 9L and 27R. For uncompensated Baro-VNAV systems, LNAV/VNAV NA below -15°C (5°F) or above 54°C (130°F). DME/DME RNP-0.3 NA. When local altimeter not received, use Palm Beach Intl altimeter setting and increase LPV DA to 352 feet; increase LNAV/VNAV DA to 412 feet and all visibilities ½ SM; increase all MDA 40 feet and LNAV Cats C/D visibility ½ SM. Rwy 14 helicopter visibility reduction below ¾ SM NA. Baro-VNAV and VDP NA when using Palm Beach Intl altimeter setting.

**MISSED APPROACH:** Climb to 2300 direct YADUD and on track 069° to WOPDU and hold.

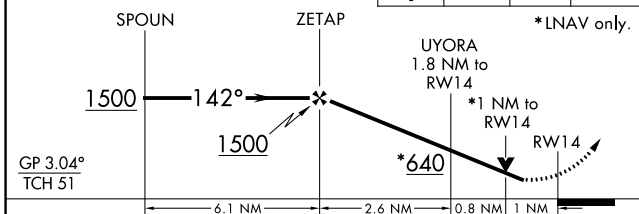
AWOS-3 <b>119.975</b>	PALM BEACH APP CON <b>128.3 317.4</b>	CLNC DEL <b>120.825</b>	UNICOM <b>123.075 (CTAF) 0</b>
--------------------------	--	----------------------------	-----------------------------------



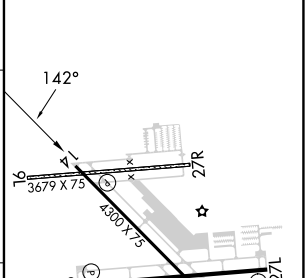
SE-3, 28 NOV 2024 to 26 DEC 2024

SE-3, 28 NOV 2024 to 26 DEC 2024

VGSI and RNAV glidepath not coincident (VGSI Angle 3.00/TCH 40).	2300	YADUD	WOPDU
		tr 069°	



ELEV 22	TDZE 21
---------	---------



CATEGORY	A	B	C	D
LPV DA		324-7/8	303 (400-7/8)	
LNAV/VNAV DA		384-1	363 (400-1)	
LNAV MDA		380-1	359 (400-1)	
CIRCLING	460-1 438 (500-1)	480-1 458 (500-1)	700-2 678 (800-2)	720-2 1/4 698 (700-2 1/4)

MIRL Rwy 9R-27L and 14-32  
REIL Rwy 9R, 14, 27L and 32