

WAAS CH 78024 W09A	APP CRS 092°	Rwy Idg 4300 TDZE 22 Apt Elev 22
---------------------------------	------------------------	---

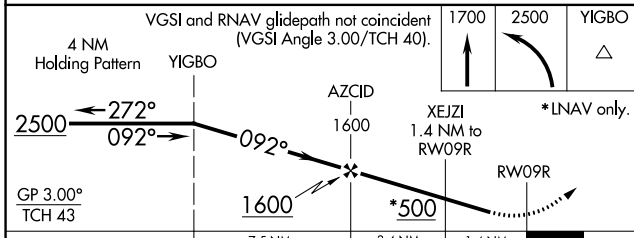
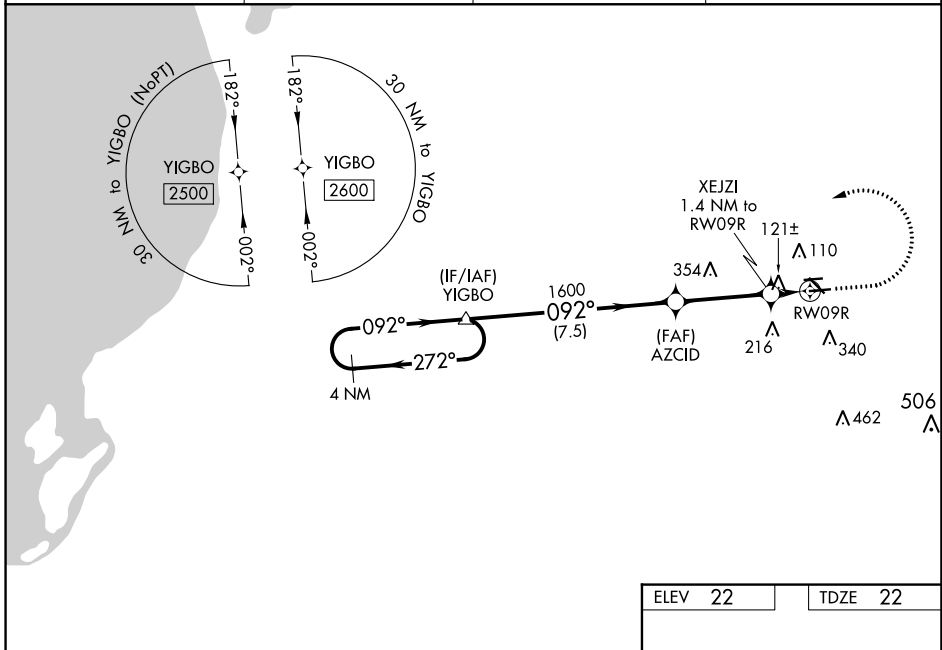
RNAV (GPS) RWY 9R

NORTH PALM BEACH COUNTY GENERAL AVIATION (F45)

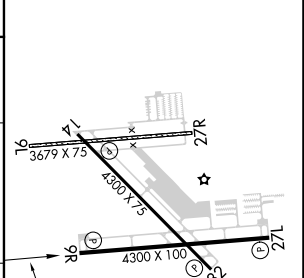
NA Circling NA to Rws 9L and 27R. Baro-VNAV NA when using Palm Beach Intl altimeter setting. For uncompensated Baro-VNAV systems, LNAV/VNAV NA below -1.5°C (5°F) or above 54°C (130°F). DME/DME RNP-0.3 NA. When local altimeter not received, use Palm Beach Intl altimeter setting and increase LPV DA to 300 feet; increase LNAV/VNAV DA to 316 feet; increase all MDA 40 feet and LNAV Cats C/D visibility 1/8 SM. Rwy 9R helicopter visibility reduction below 3/4 SM NA.

MISSED APPROACH: Climb to 1700 then climbing left turn to 2500 direct YIGBO and hold.

AWOS-3 119.975	PALM BEACH APP CON 128.3 317.4	CLNC DEL 120.825	UNICOM 123.075 (CTAF) 0
--------------------------	--	----------------------------	-----------------------------------



ELEV 22	TDZE 22
----------------	----------------



CATEGORY	A	B	C	D
LPV DA	272-7/8 250 (300-7/8)			
LNAV/VNAV DA	288-7/8 266 (300-7/8)			
LNAV MDA	420-1 398 (400-1)		420-1 1/8 398 (400-1 1/8)	
CIRCLING	460-1 438 (500-1)	480-1 458 (500-1)	700-2 678 (700-2)	720-2 1/4 698 (700-2 1/4)

MIRL Rws 9R-27L and 14-32 **!**
REL Rws 9R, 14, 27L and 32 **!**

SE-3, 28 NOV 2024 to 26 DEC 2024

SE-3, 28 NOV 2024 to 26 DEC 2024