

# BARMY FIVE DEPARTURE (RNAV)

SE-2, 28 NOV 2024 to 26 DEC 2024

RNAV 1 - DME/DME/IRU or GPS.  
RADAR required.

**TOP ALTITUDE:**  
3000

CHARLOTTE DEP CON  
128.325 307.8  
ATIS \*  
133.675  
CLNC DEL  
118.55  
CLNC DEL (when twr closed)  
127.25  
GND CON  
121.85  
CONCORD TOWER \*  
134.65  
UNICOM  
122.95

DATTO

NOTE: For turbo jets only.  
NOTE: If unable to accept climb rates, advise ATC on initial contact.  
NOTE: Transponder code will be issued via PDC or Charlotte CLNC DEL.  
NOTE: Upon reaching 10000 MSL, accelerate to and maintain 280K, if unable advise ATC.

RALEIGH/DURHAM  
RDU

TAR RIVER  
TYI

FL180  
00.00  
\*3300

07°

(17)

084°

FL180  
\*3400  
(70)

NUITZE

FL180  
\*2300  
(22)

048°

RDU

OLUBE

BATTA

FL180  
\*1900  
(39)

077°

BARMY

FL180  
\*2100  
(13)

077°

GULFY

088°  
(18)

MESHY

10400

077°

BATTA

FL180  
\*1900  
(39)

077°

BARMY

FL180  
\*2100  
(13)

077°

GULFY

088°  
(18)

MESHY

10400

077°

BATTA

FL180  
\*1900  
(39)

077°

BARMY

FL180  
\*2100  
(13)

077°

GULFY

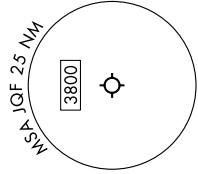
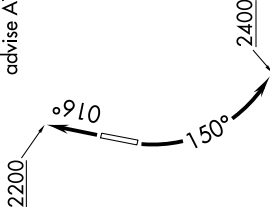
088°  
(18)

MESHY

10400

EBOOK

TAKEOFF MINIMUMS  
Rwy 2: Standard.  
Rwy 20: Standard with minimum  
climb of 320' per NM to 2400.



NOTE: Chart not to scale.

## DEPARTURE ROUTE DESCRIPTION

TAKEOFF RUNWAY 2: Climb on heading 016° to 2200, then on heading assigned by ATC, thence. . . .  
TAKEOFF RUNWAY 20: Climbing left turn heading 150° to 2400, then on heading assigned by ATC, thence. . . .

. . . on RADAR vectors to MESHY, then on depicted route to BARMY. Then on assigned transition. Maintain 3000, expect clearance to filed altitude within 10 minutes after departure.

- NUITZE TRANSITION [BARMY5.NUITZE]
- RALEIGH/DURHAM TRANSITION [BARMY5.RDU]
- TAR RIVER TRANSITION [BARMY5.TYI]

# BARMY FIVE DEPARTURE (RNAV)

SE-2, 28 NOV 2024 to 26 DEC 2024