

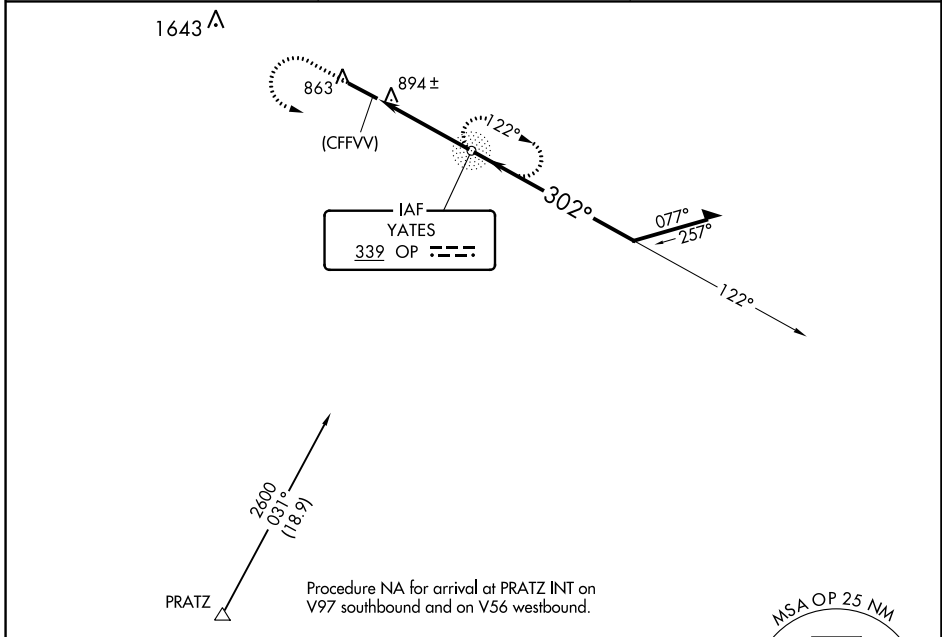
NDB OP <b>339</b>	APP CRS <b>302°</b>	Rwy Idg <b>4962</b>
		TDZE <b>796</b>
		Apt Elev <b>798</b>

# NDB RWY 30

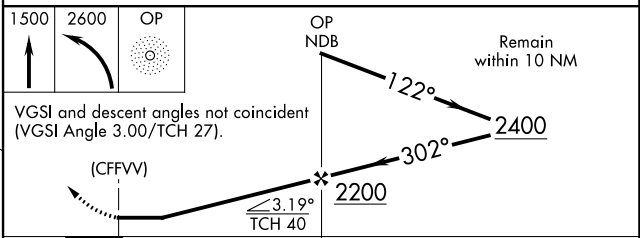
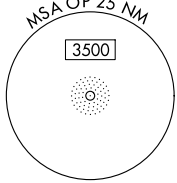
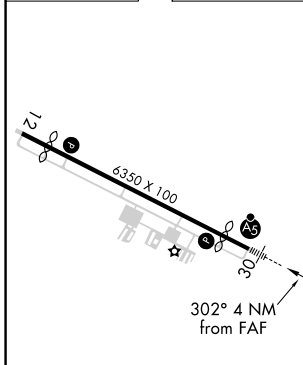
THOMASTON-UPSON COUNTY (OPN)

<p>For inop ALS, increase S-30 Cats A, B visibility to 1 SM and Cats C, D to 1 1/8 SM.</p>	<p>MALSR</p>	<p>MISSED APPROACH: Climb to 1500 then climbing left turn to 2600 direct YATES NDB and hold, continue climb-in-hold to 2600.</p>

AWOS-3 <b>133.975</b>	ATLANTA APP CON ★ <b>124.2 279.6</b>	UNICOM <b>122.8 (CTAF)</b>
--------------------------	---	-------------------------------



ELEV 798	<b>D</b>	TDZE 796
----------	----------	----------



CATEGORY	A	B	C	D
S-30	1200-3/4 404 (500-3/4)			
CIRCLING	1220-1 422 (500-1)	1260-1 462 (500-1)	1260-1 1/2 462 (500-1 1/2)	1680-3 882 (900-3)

MIRL Rwy 12-30

FAF to MAP 4 NM

Knots	60	90	120	150	180
Min:Sec	4:00	2:40	2:00	1:36	1:20

SE-4, 28 NOV 2024 to 26 DEC 2024

SE-4, 28 NOV 2024 to 26 DEC 2024