


WAAS CH <b>58215</b> <b>W30A</b>	APP CRS <b>301°</b>	Rwy ldg TDZE Apt Elev	<b>4962</b> <b>796</b> <b>798</b>
--	------------------------	-----------------------------	---

# RNAV (GPS) RWY 30

THOMASTON-UPSON COUNTY (OPN)

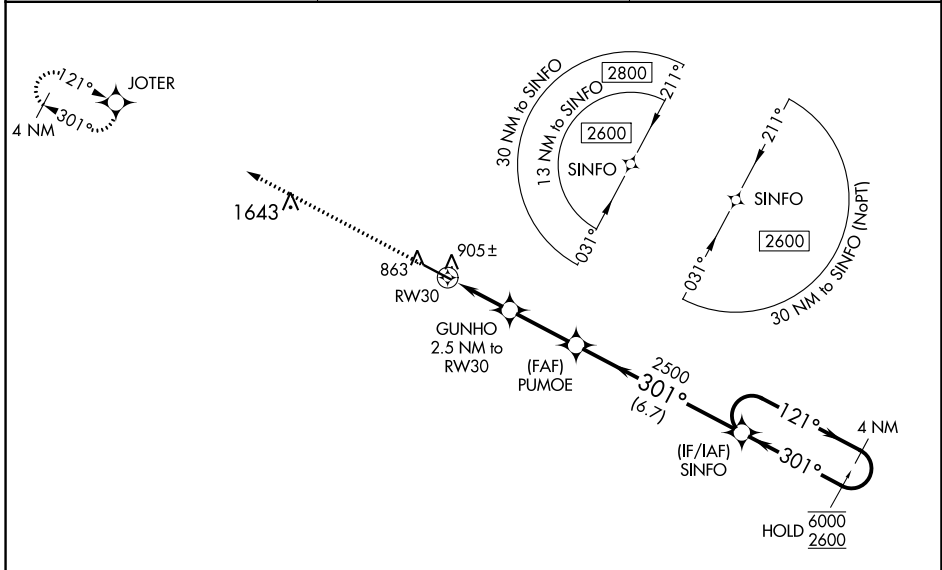
RNP APCH-GPS.

**⚠** For uncompensated Baro-VNAV systems, LNAV/VNAV NA below -16°C or above 54°C. For inop ALS, increase LNAV/VNAV all Cats visibility to 7/8 SM and LNAV Cat C/D visibility to 1 SM.

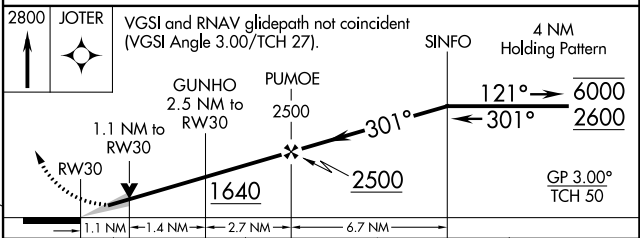
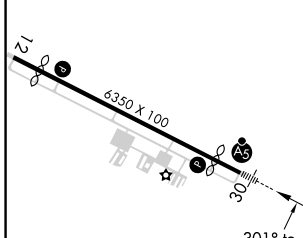
MALSR 

MISSED APPROACH: Climb to 2800 direct JOTER and hold.

AWOS-3 <b>133.975</b>	ATLANTA APP CON * <b>124.2 279.6</b>	UNICOM <b>122.8 (CTAF) 0</b>
--------------------------	---	---------------------------------



ELEV 798	<b>D</b>	TDZE 796
----------	----------	----------



CATEGORY	A	B	C	D
LPV DA		996-1/2	200 (200-1/2)	
LNAV/VNAV DA		1086-1/2	290 (300-1/2)	
LNAV MDA	1160-1/2	364 (400-1/2)	1160-5/8	364 (400-5/8)
CIRCLING	1220-1 422 (500-1)	1260-1 462 (500-1)	1260-1 1/2 462 (500-1 1/2)	1680-3 882 (900-3)

SE-4, 28 NOV 2024 to 26 DEC 2024

SE-4, 28 NOV 2024 to 26 DEC 2024